

AutoBid Mechanical 2018v2

SOFTWARE

This document provides basic information about new features and modifications in release 2018v2 of the Trimble® AutoBid® Mechanical software.

These Release Notes cover the following topics:

- ▶ [Introduction](#)
- ▶ [New Features, Enhancements, and Modifications](#)
- ▶ [Database Updates](#)
- ▶ [Essential release information](#)
- ▶ [Update installation instructions](#)
- ▶ [Product assistance](#)
- ▶ [Legal Notices](#)

Introduction

These Release Notes describe features and modifications that are new in version 2018v2 of the AutoBid Mechanical software.

Installation procedure

For step-by-step instructions for a new installation of this release, refer to the [Trimble AutoBid Mechanical Installation Guide](#).

Upgrade procedure

For requirements to install this update, see the [Update installation instructions](#) section of this document. Trimble recommends that you print these instructions to help ensure correct operation of the software application after installation.

Compatibility

Operating Systems

This version of AutoBid Mechanical is compatible with the following Microsoft® operating systems:

- Windows® 10 Professional
- Windows® 7 Professional, 32-bit and 64-bit

NOTE – We do not support Windows Home Edition, Windows 8.x or Windows 10 S.

For a complete listing of system requirements and technical specifications, view our [System Specifications](#). To run AutoBid Mechanical on 4K monitors, please follow the instructions in this [support note](#).

Version: 2018v2
Revision: A
Date: May 2019

Trimble Quick Link

The AutoBid Mechanical software includes an interface with Trimble Quick Link licensing and communication system. You must install the updated Quick Link software to ensure that you have the latest functionality.

New Features, Enhancements, and Modifications

Trimble Advanced Rapid Report Template

We are excited to inform you of a New Rapid Report Template. This template has been updated to include many new tabs with information that will allow you to closeout an estimate in a far more granular and streamlined way. A lot of attention to detail went into this feature and we hope that you enjoy working with it as much as we have enjoyed creating it.

Crew Mix Calculator:

CREW MIX CALCULATOR							SHOP LABOR - FITTERS								
Includes FEMS Labor															
		Hide Fitters		Show Plumbers		Show Other		Hide Shop		Open Help					
		Add Fitters row		Delete Fitters row											
FIELD LABOR - FITTERS							SHOP LABOR - FITTERS								
	CREW	HOURS	COST / HR	BURDEN %	FRINGE \$	FULL COST / HR		CREW	HOURS	COST / HR	BURDEN %	FRINGE \$	FULL COST		
1 Foreman							1 Foreman								
2 Journeyman	1.000	10,447.237					2 Journeyman	1.000	6.093						
3 Welder							3 Welder								
4 5th Year Apprentice							4 5th Year Apprentice								
5 4th Year Apprentice							5 4th Year Apprentice								
6 3rd Year Apprentice							6 3rd Year Apprentice								
7 2nd Year Apprentice							7 2nd Year Apprentice								
8 1st Year Apprentice							8 1st Year Apprentice								
TOTALS - FIELD LABOR - FITTERS							TOTALS - SHOP LABOR - FITTERS								
	1.000	10,447.237						1.000	6.093						
FIELD LABOR - FITTERS - TOTAL EXTENDED COST							SHOP LABOR - FITTERS - TOTAL EXTENDED COST								
TOTALS - FIELD OVERALL							TOTALS - SHOP OVERALL								
		10,919.109							6.093						
FIELD OVERALL - TOTAL EXTENDED COST							SHOP OVERALL - TOTAL EXTENDED COST								
TOTALS - FITTERS OVERALL							TOTALS - OTHER OVERALL								
		10,453.330							0.000						
TOTALS - PLUMBERS OVERALL							TOTALS - OTHER OVERALL								
		471.872							0.000						
TOTALS - OTHER OVERALL							TOTALS - OTHER OVERALL								
		0.000							0.000						

Labor Factoring:

LABOR FACTORING														Add new row		Delete row		Open Help	
	DESCRIPTION	TRADE	FIELD/SHOP	# OF HOURS	LABOR %	IMPACT FACTOR	HOURS	COST	SUBTOTAL	BURDEN %	BURDEN TOTAL	FRINGE \$	FRINGE TOTAL	FULL COST	EXTENDED COST				
1	Accelerated Schedule	All Trades	Field	10,919.109	50.000	1.000	5,459.555	75.00	409,466.59	5.000	20,473.33	2.30	12,556.98	81.05	442,496.90				
2	Addenda Impact	All Trades	Field	10,925.202		1.000													
3	Confined Space	All Trades	Field	10,919.109		1.000													
4	Job Location	All Trades	Field	10,919.109		1.000													
5	Overtime Impact	All Trades	Field	10,925.202		1.000													
6	Weather Conditions	All Trades	Field	10,919.109	100.000	1.000	10,919.109	75.00	818,933.18	5.000	40,946.66	2.30	25,113.95	81.05	884,993.79				
TOTALS																			
							16,378.664	75.00	1,228,399.77	5.000	61,419.99	2.30	37,670.93	81.05	1,327,490.69				

Subcontracts:

SUBCONTRACTS										Add Subcontract row		Add Vendor row		Open Help		Default Tax = 8.000%		Default OH = 6.000%		Default MU = 4.000%	
	V	SUBCONTRACT DESCRIPTION	COST	COST ADJ %	COST ADJ \$	NET COST	TAX %	OVERHEAD %	MARKUP %	TOTAL											
1	+	Sheet Metal	45,000.00	10.000	4,500.00	49,500.00	✓	✓	✓	58,934.30											
2	+	Controls and/or Automation																			
3	+	Fire Protection																			
Totals			45,000.00	10.00	4,500.00	49,500.00	3,960.00	3,207.60	2,266.70	58,934.30											

Database Updates

→ US & Canadian New User Database (NUD)

- ◆ Changes to Carbon Steel Piping and fitting items
 - Expanded pipe sizes to 60" where applicable to match MCAA labor
 - Updated descriptions to more accurately reflect Standard Weight and True schedule 40
 - Updated descriptions to more accurately reflect Extra Heavy and True schedule 80
 - Updated Pipe Items names to include ASTM material classifications, end types and standard lengths
 - Updated and verified labor selections for Buttweld, Grooved, Press Joint, Socket Weld and Threaded labor methods
- ◆ Hanger Components
 - Updated price codes, where available, for Hilti hanger components
 - Added pipe support brackets
- ◆ HVAC Specialties
 - Added Refrigerant Gas tables for use with Gas Conversion Factors. NOTE: Pricing is based on a Price per pound of refrigerant.
 - Added to Gas Conversion Factors table and included the conversion factors for most of the common refrigerant types

→ New Assemblies (US & Canadian)

- ◆ Plumbing
 - Rough In: Floor Mount Water Closet
 - Rough In: Floor Mount Water Closet + Lavatory
 - Rough In: Floor Mount Water Closet + Lavatory + Floor Drain
 - Rough In: Floor Mount Water Closet + Lavatory + Floor Drain + Urinal
 - Rough In: Floor Mount Water Closet + 2 Lavs + 2 Urinals + Floor Drain
 - Rough In: Urinal
 - Rough In: Lavatory / Sink
- ◆ Excavation & Backfill
 - Stable Rock
 - Type A Soil
 - Type B Soil
 - Type C Soil
 - Excavation assembly variables are based on the size of the pipe being buried and the average depth and length of the ditch.

→ Canadian New User Database (NUD)

- ◆ Enhanced PVC Material Coverage and specifications for the following:
 - ABS Schedule 40
 - PVC SDR-35 BDS CSA/BNQ
 - PVC SDR-35 Gasket Joint
 - PVC System 15

Essential Release Information

Windows operating system updates

To successfully install this AutoBid Mechanical software update, your system must be up-to-date with all Windows updates. If a restart of the operating system is necessary after Windows updates have been installed, you must do this *before* starting the AutoBid Mechanical installation procedures outlined in this document.

Trimble Quick Link software


The AutoBid Mechanical software requires Trimble Quick Link licensing and communication software. This software is included on the AutoBid Mechanical Installation media.

This installation may require a restart of your computer. Trimble recommends that you do this during a non-busy time or after hours to minimize disruptions in your company's workflow.

Compatible versions for this update

Release 2018v2 of the AutoBid Mechanical software can be updated from the following versions:

- AutoBid Mechanical 2018 v1
- AutoBid Mechanical 2017 v1
- AutoBid Mechanical 2016 v1
- AutoBid Mechanical 2014 v3

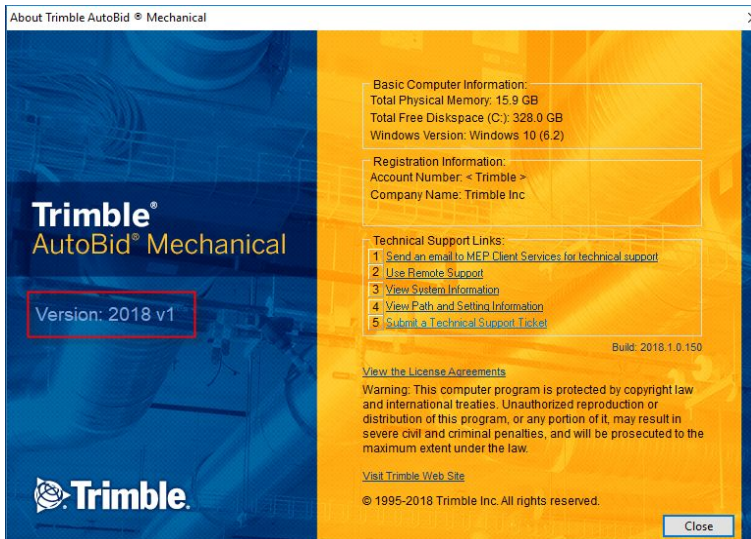
 **Tip** – If you are not currently on one of the releases above, you must update to 2014 v3 before upgrading to 2018 v2.

Update Installation Instructions


The information below outlines the update installation requirements for Trimble® AutoBid® Mechanical 2018 v2.

AutoBid Mechanical version verification

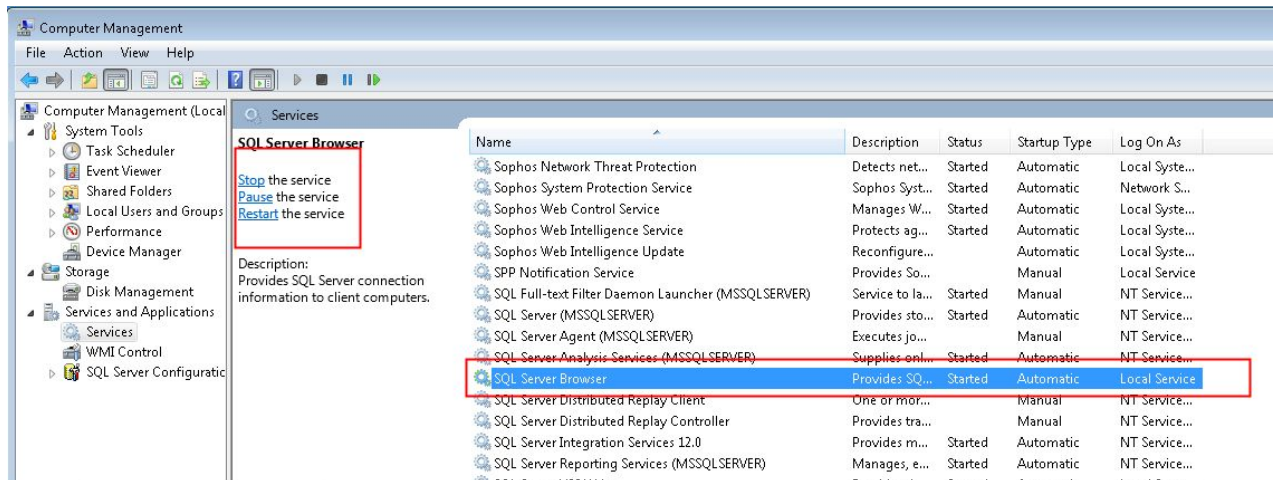
1. Open the AutoBid® Mechanical application currently installed
2. Go to **Help / About AutoBid® Mechanical** to see which version you are currently running.



3. Make note of the version you have installed:
 - If you have Version 2017 v1 or Version 2016 v1 installed please refer to this [Upgrading from Version 2016 v1 document](#)
 - If you have Version 2014 v3 installed please refer to this [Upgrading from Version 2014 v3 document](#)

 **Tip** – You may want to check to ensure that SQL Server Browser Service is started prior to beginning your install.

You can locate this in Services > SQL Server Browse - Select Start if it is not already started



Workstation update installation


If the AutoBid Mechanical software is installed on a network, you must install the updated software on each workstation after the network service update installation is complete. Until each workstation is updated, access to the AutoBid Mechanical software is not allowed.

Microsoft® SQL Server® Express

The AutoBid Mechanical application requires Microsoft SQL Server to manage your data. The installation routine will attempt to locate the Microsoft SQL Server application on your computer. If the necessary application is not found, the install will automatically launch the Microsoft SQL Server Express install.

Please be patient as this process will take some time to complete. Do not discontinue this installation.

Microsoft SQL Server Express should be able to accommodate most databases. If you keep a very large number of projects and your database exceeds the maximum size allowed by Microsoft SQL Express, you will need to upgrade to Microsoft SQL Server. Please contact Trimble MEP Client Services if you believe that you need to upgrade.

 **Tip** – Microsoft SQL Server are only supported with 64-bit operating systems.

NOTE: If purchasing an upgrade to SQL Server Standard Edition from Trimble, it will not upgrade SQL Server 2012 to SQL Server 2014.

Product Assistance

Trimble offers several ways to obtain help using the AutoBid Mechanical software.

Accessing the Help

The online help is easy to use and is accessible through any of the following methods:

- Press **F1** at any time while using the software to display help for the current screen or dialog.
- Select **Help** and then select the appropriate option from the menu. You can scan the Table of Contents, use the Index, or the Search function to find the information you are looking for.
- Use the **Index** tab to locate key words throughout the help system.
- Use the **Search** tab to find specific words used in the help system; for example, you might search for the word delete for instructions on deleting certain data from your system.

Trimble MEP Client Services

You can send a message directly to MEP Client Services by going to Help / Send message to Technical Support. This feature allows you to describe your issue, as well as attaching a screenshot.

- Before calling Client Services, we suggest that you consult the online help. Many of the common procedures and questions are covered in this system.
- Trimble MEP Client Services is available during regular business hours Monday through Friday.
We are not available on major holidays.

Toll-free Telephone

1-800-234-3758

Internet e-mail

mepsupport@trimble.com

Website

mep.trimble.com

Legal Notices

Trimble Inc.
116 Inverness Drive East, Suite 210
Englewood, Colorado 80112
800-234-3758

Copyright and Trademarks

©1999-2018, Trimble Inc. All rights reserved. Trimble, the Globe & Triangle logo, AutoBid, DuctDesigner 3D, and PipeDesigner 3D, are trademarks of Trimble Inc., registered in the United States and in other countries. Microsoft, SQL Server, and Windows are either registered trademarks or trademarks of Microsoft Corporation in the United States and/or other countries. All other trademarks are the property of their respective owners.

This publication, or parts thereof, may not be reproduced in any form, by any method, for any purpose, without the written consent of Trimble Inc.

Release notice

This is the May 2019 release (Revision A) of the Release Notes. It applies to version 2018v2 of the AutoBid Mechanical software.