

QuickPen

AutoBid[®]
Mechanical

Release
Notes



©1998-2011 Trimble Navigation Limited. All rights reserved.

This publication, or parts thereof, may not be reproduced in any form, by any method, for any purpose, without the written consent of QuickPen International, a Division of Trimble Navigation Limited.

The subject matter described herein is covered by United States Patent 5,920,849.

Published by:

QuickPen International
384 Inverness Parkway, Suite 200
Englewood, Colorado 80112
(800)234-3758

Edition: AutoBid® Mechanical Release Notes, 2012 v1
June 22, 2012 Part # ABMC8058.08.0612_release notes 2012.1)

All QuickPen products are trademarks or registered trademarks of Trimble Navigation Limited. Microsoft® Windows® and/or other Microsoft products referenced herein are either trademarks or registered trademarks of Microsoft Corporation. Acrobat Reader is a registered trademark of Adobe Systems Incorporated. Adaptive Server Anywhere (ASA) is a registered trademark of Sybase, Inc. Other brand and product names are trademarks or registered trademarks of their respective holders.

The PHCC Labor Calculator is copyrighted material and is solely and exclusively owned by the NAPHCC Educational Foundation. Any unauthorized modification, reproduction, and/or redistribution of Labor Calculator materials in written or electronic forms is expressly prohibited.

Neither the Foundation nor any person connected with the Labor Calculator project or its preparation in any way warrants or makes any representation whatsoever with respect to the accuracy of the information contained in the Labor Calculator materials, and will not be held liable for any damages resulting from its use. Labor time information is intended only as a guide in estimating the labor involved in a given job. By viewing or employing use of the Labor Calculator materials, you agree to be bound by the terms set forth herein. For more information on PHCC or PHCC Labor Calculator, call (703) 237-8100.

Mechanical Contractors Association (MCA) Labor Manual is also protected by copyright laws. Contact MCA for further information regarding usage and liability of their product.

AutoBid[®] Mechanical 2012 v1 Release Notes

What You Receive with Release 2012 v1

- One Installation DVD
- AutoBid Mechanical “*Let’s Get Started*” foldout

Note: The AutoBid Mechanical update installs only program modifications and enhancements. Your existing tables, specifications, and estimates are not impacted in any way.

AutoBid Mechanical Release 2012 v1 Online Documentation

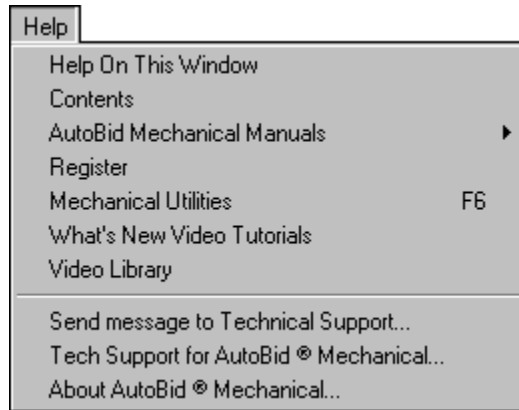
Note: Adobe Reader® is required on your system to view much of the online documentation. If this software is not already installed on your computer, a link to the Adobe website where you can obtain a free download is available on the AutoBid Mechanical Installation DVD.

Documentation pertaining to this release of AutoBid Mechanical is available online as follows:

- *Before Installation:*
 - ◆ From the AutoBid Mechanical DVD:
 - *Release Notes*
 - *Update Installation Instructions*
 - *ReadMe*
- *After Installation:*
 - From the AutoBid Mechanical Help menu
 - Pressing **F1** in any AutoBid Mechanical window
 - From the Windows Start menu

Note: If you are reading this document online, QuickPen strongly recommends that you print the above documents and review them thoroughly prior to installing this update.

Help Menu Commands and Technical Support



The Help menu provides access to online help, as well as other utilities and information, which includes the following:

Update Videos

The What's New Video Tutorials command on the Help menu allows you to view a demonstration of the modifications and enhancements included in this release of AutoBid Mechanical. You have the option of installing the videos directly to your hard drive or viewing them from the AutoBid Mechanical Installation DVD.

Video Libraries

The Video Library command on the Help menu provides you with demonstrations of many of the features in AutoBid Mechanical. You can view these as a refresher to training classes you have attended. You can also use them to become more familiar with the application prior to attending Training. You have the option of installing these directly to your hard drive or viewing them from the AutoBid Mechanical Installation DVD.

Tech Support for AutoBid Mechanical

The Technical Support screen provides direct access to various support utilities.

- Additional support options, such as e-mail and online support
- System Information for your computer
- Submit a Technical Support Ticket

Update

Installation Information

Instructions for proper installation of this update are outlined in a separate document included on the AutoBid Mechanical Installation DVD. You must print, review, and follow the instructions closely to help ensure that all software applications function properly after installation.

Trimble® Quick Link

This release of AutoBid Mechanical includes an interface with Trimble® Quick Link, a licensing and communication software application. Installation of Trimble Quick Link is ***required*** to provide continued licensing of AutoBid Mechanical.

Note: If you do not install Trimble® Quick Link and properly configure communication between the two software applications, AutoBid Mechanical will not function properly. QuickPen strongly recommends that you print the documents listed below and follow the instructions carefully to help ensure AutoBid Mechanical functions properly after updating the application.

- Configuring the AutoBid Mechanical software application to communicate with Trimble Quick Link is included in the *AutoBid Mechanical Update Installation Instructions* document on the DVD.
- Configuring Trimble® Quick Link for communication with AutoBid Mechanical is also covered in the online help system.

Release 2012 v1

Database Modifications

This release includes modifications to the default QuickPen database. These changes can be incorporated into your database by using the restore feature in AutoBid Mechanical. Refer to the [Adding Updated Data](#) topic below for more information.

Note: Trimble Quick Link *and* AutoBid Mechanical, Release 2012 v1, must be installed with communication configured *prior* to adding the updated data to your system. Detailed information is included in the *Update Installation Instructions* document available on the installation DVD.

Database Enhancements

If you have any questions on how to use this new default data, please contact our technical support department.

Adding Updated Data

Note: Keep the following in mind before beginning the processes outlined below:

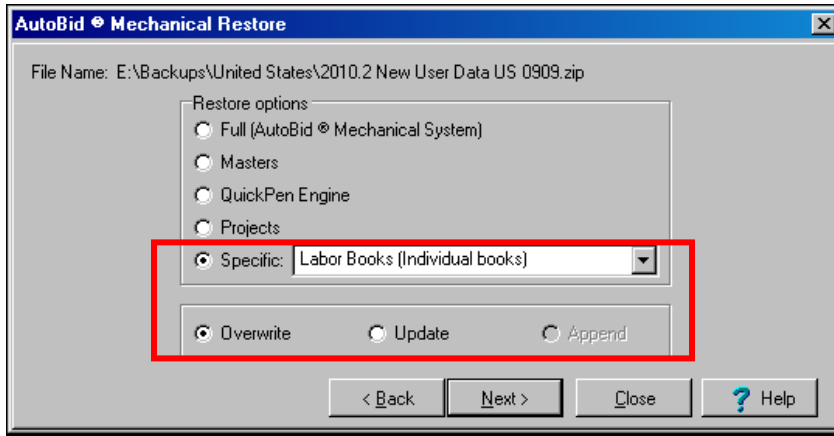
- Perform a **full system backup** before performing the tasks outlined below.
- During the restore process, if you are installed on a network, everyone (all workstations) must be logged out of AutoBid Mechanical!
- This process will take a substantial amount of time to complete.
- Please be aware that some database maintenance will be required if you choose to update the MCAA tables.

The instructions below provide you with step-by-step instructions to update and locate any broken labor links that may result from updating the tables.

1. You will need the AutoBid Mechanical, Release 2012 v1, installation DVD to complete the processes outlined in this section. Insert it into the appropriate drive of your computer.
2. Open AutoBid Mechanical and go to **File > Restore**.
3. Click **Browse** and navigate to the installation DVD. Open the Backups folder and click **United States** or **Canada** (depending on your location and/or the type of data you are updating). Double-click on the **New User Data** zip file. Click **Next**.

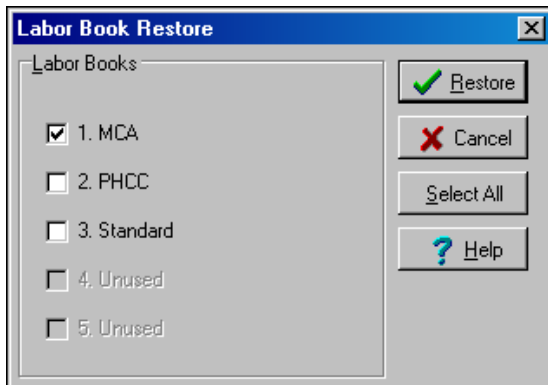
MCAA Labor Book Update

1. Click **Specific** and then select **Labor Books (individual books)** from the list. Make sure the **Overwrite** radio button is selected.



Click **Next**.

2. Click the **MCA** checkbox and make sure that **MCA** is selected.



Click **Restore**.

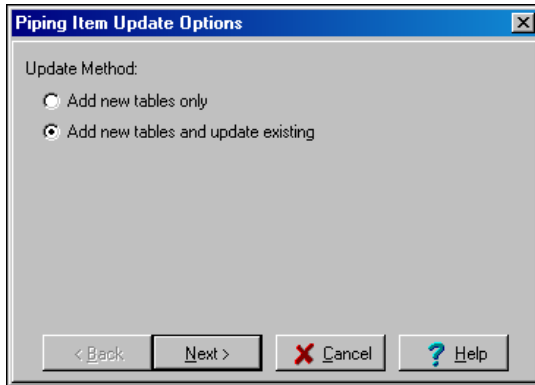
3. The restore process begins. A progress indicator displays on-screen during the update. Do *not* click Cancel during this procedure!
4. Close and reopen AutoBid Mechanical. **Note:** This is required in order for the program/database to recognize the update system-wide.

Piping Items Update

For the AutoBid Mechanical database to fully recognize the changes made in the MCAA Labor Book, updating Piping Items is also required. These instructions assume you have the AutoBid Mechanical installation DVD in the appropriate drive of your computer.

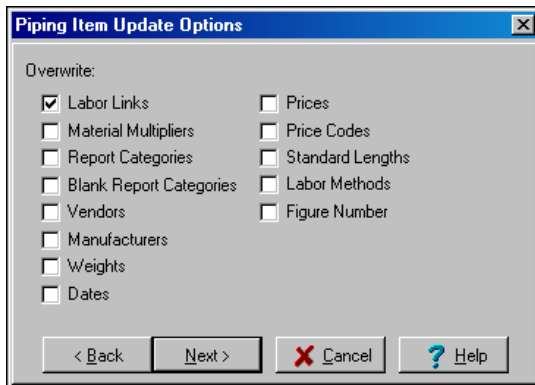
1. Open AutoBid Mechanical and go to **File > Restore**.

- Click **Browse** and navigate to the installation DVD. Open the **Backups** folder and click **United States** or **Canada** (depending on your location and/or the type of data you are updating). Double-click on the **New User Data** zip file. Click **Next**.
- Click **Specific** and then select **Piping Items** from the list. Make sure the **Update** radio button is selected. Click **Next**.
- Select the **Add new tables and update existing** radio button.



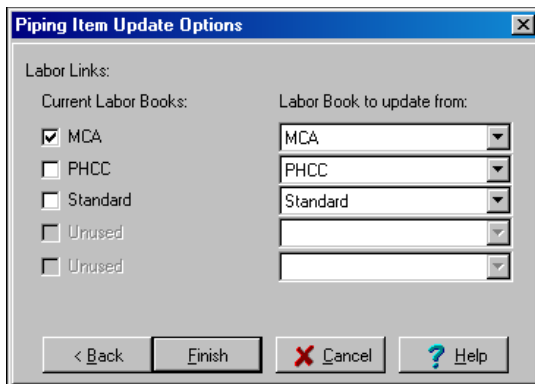
Click **Next**.

- In the **Overwrite** pane, select the **Labor Links** checkbox.



Click **Next**.

- Click the **MCA** checkbox and make sure that **MCA** is selected in the list.



Click **Finish**.

- The update process begins. A progress indicator displays on-screen during the update. Do *not* click **Cancel** during this procedure! When the update is complete, a report displays

on-screen. This report provides information pertaining to the items updated. QuickPen recommends that you review the report before proceeding. You can save it to a file or print it from this window.

8. Close and reopen AutoBid Mechanical. **Note:** This is required in order for the program/database to recognize the update system-wide.

Broken Labor Links

Please be aware that some database maintenance will be required if you choose to update the MCAA tables. You may find missing labor links due to the changes incorporated into this release. You are **strongly** encouraged to use the **Tools > Find Broken Labor Links** tool in the Labor Books module prior to creating or working on bids. This will locate and allow you to correct any broken links. Keep in mind that this process may take a substantial amount of your time.

New Default Project

If you wish to add the new default project to your existing database, proceed as follows. **Note:** These instructions assume you have the AutoBid Mechanical installation DVD in the appropriate drive of your computer.

1. Open AutoBid Mechanical and go to **File > Restore**.
2. Click **Browse** and navigate to the installation DVD. Open the Backups folder and click **United States** or **Canada** (depending on your location and/or the type of data you are updating). Double-click on the **New User Data** zip file. Click **Next**.
3. Click **Projects** and then click **Next**.
4. In the Select Projects to Restore window, click on the **AAA Standard Project**.
5. Click **Restore**.

AutoBid® Mechanical

2012 v1 Release Highlights

The AutoBid Mechanical system enhancements offer customers the following new features and enhancements:

Trimble® Quick Link

Note: Due to licensing considerations, Trimble Quick Link is *required* in order to use AutoBid Mechanical. Installation of the Trimble Quick Link software is covered in the AutoBid Mechanical *Update Installation Instructions* document.

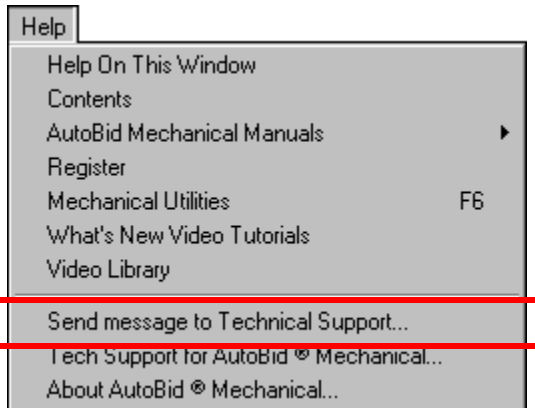
This release of AutoBid Mechanical includes an interface with Trimble Quick Link, a licensing and communication software application. Benefits of this software application are:

- **Virtual Computer Users**
If you have AutoBid Mechanical installed on a virtual machine, you no longer have to contact Technical Support to renew your licenses every 90 days.
- **Technical Support Tickets**
You can send Technical Support requests by using the Quick Link communication feature in AutoBid Mechanical (see below for more information). This automatically adds your request to the QuickPen support queue.
- **Easier License Check-Out Functionality**
To checkout or borrow a license, all you need is an initial internet connection and proper security (Login name and Password).
- **License Administration Control**
Using the Trimble® Quick Link Management Studio, you can view license availability, update licensing, and obtain new licensing.
- **Server Moves**
In the event you need to move AutoBid Mechanical from one server to another, you can easily accomplish this without contacting QuickPen Technical Support for licensing issues.
- **Share licenses**
Licenses can be shared between multiple offices; however, the Trimble® Quick Link Hub must be installed at all locations.

Technical Support Ticket

When you have questions or issues requiring contact with QuickPen Technical Support, you can simply enter these and the Trimble Quick Link software application sends your request, adds it to the QuickPen Technical Support queue, and creates a support ticket. You will be contacted in a timely manner by a Technical Support Representative to discuss your request.

1. Go to the **Help** menu in the main AutoBid Mechanical or TakeOff window. *Note:* The graphic below illustrates the Help menu in the main AutoBid Mechanical window.

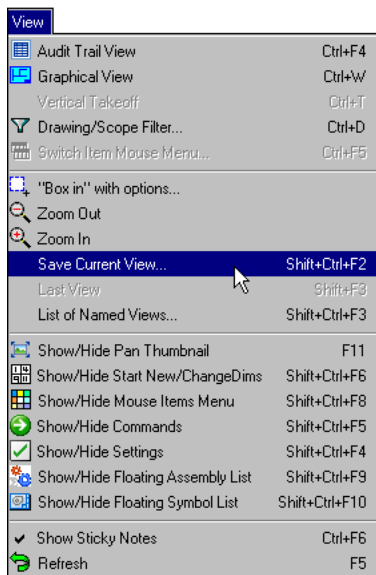


2. Click **Send message to Technical Support.**
 3. In the Send message to QuickPen Technical Support dialog, enter your **Question/Issue.**
- If desired, click on the Screen Shot tab and paste an applicable shot illustrating the Question/Issue.

On-Screen View TakeOff

➤ Named Views

This release of AutoBid Mechanical includes a new feature that allows you to save a TakeOff view



- When you have your desired view set, go to **View > Save Current View** and name the view.
- The saved views are saved and available in the List of named views window. You can then select specific views in your drawing.



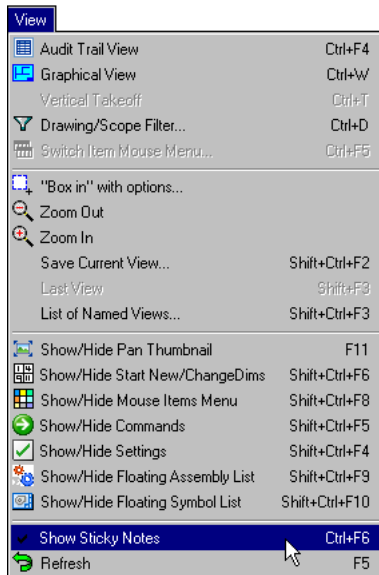
This feature may prove especially helpful if you have a drawing with notes. You can zoom in on the notes and save the view. As you are taking off your drawing and come across a note,

you can quickly switch over to the “notes view”, read the notes, and quickly go back to the previous view to continue your take off.

You can also add the menu shortcuts to your Smart Menu™ by GTCO and your MouseMenu. This will make it even more convenient to move between views while working in TakeOff.


➤ Annotations (Sticky Notes)

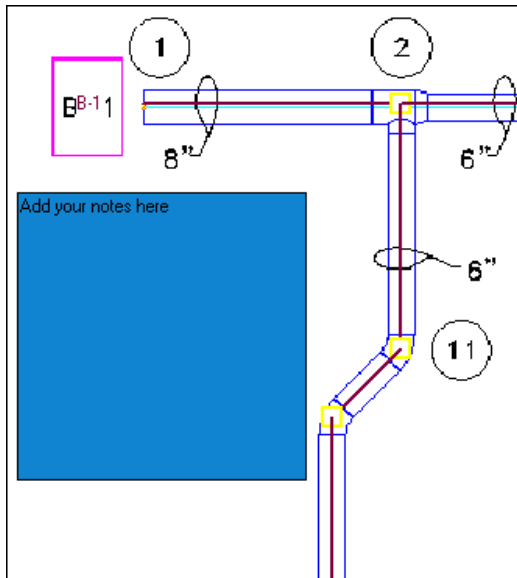
The AutoBid Mechanical software offers a new feature that allows you to add notes to your On-Screen View TakeOff drawing. The default setting is to display all notes; you have the option of hiding the notes, if desired, under the View menu in On-Screen View TakeOff.



Clicking on the command toggles the display on and off.

- A checkmark displays next to the command when active.
- No checkmark is present when the command is inactive.

You can easily add a note by clicking  on the toolbar. Draw a box where you want to place your note. You can then enter notes within the box.

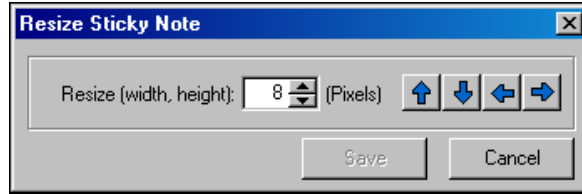


- You can move the note box by clicking on it and then dragging to another location.

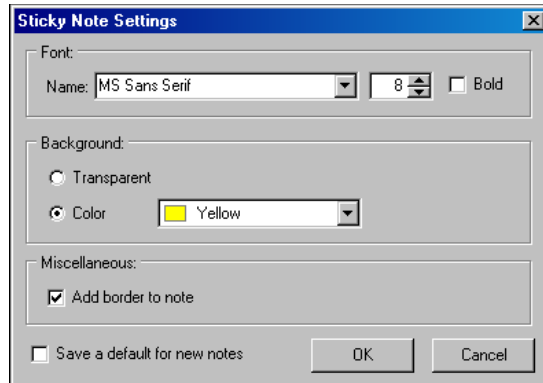
- You can resize the note box by clicking on the bottom, right, or lower right corner and dragging in-or-out.

OR

You can right-click in the box and then select **Resize Note** from the pop-up menu.



- You can change font and define note options by right clicking in the box and then clicking **Change Note Settings** from the pop-up menu.

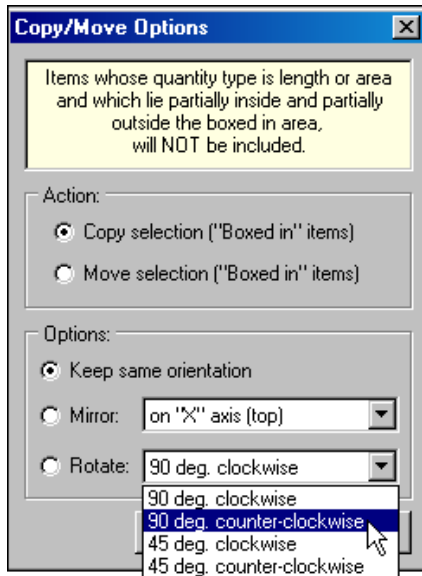


- You can include Sticky Notes when printing your TakeOff (File > Print).
- When a note is selected, you can add new or edit existing text. The note is selected when you move your mouse over the note.
- Notes are included when backing up your database or exporting your project.

Note: Notes will not be included when merging TakeOffs.

➤ Rotate with Copy/Move

When processing copy or move functions, AutoBid Mechanical, Release 2012 v1, allows you to rotate your items at 45° or 90°.



When you make your Copy/Move selection, you can specify the following in the Options pane:

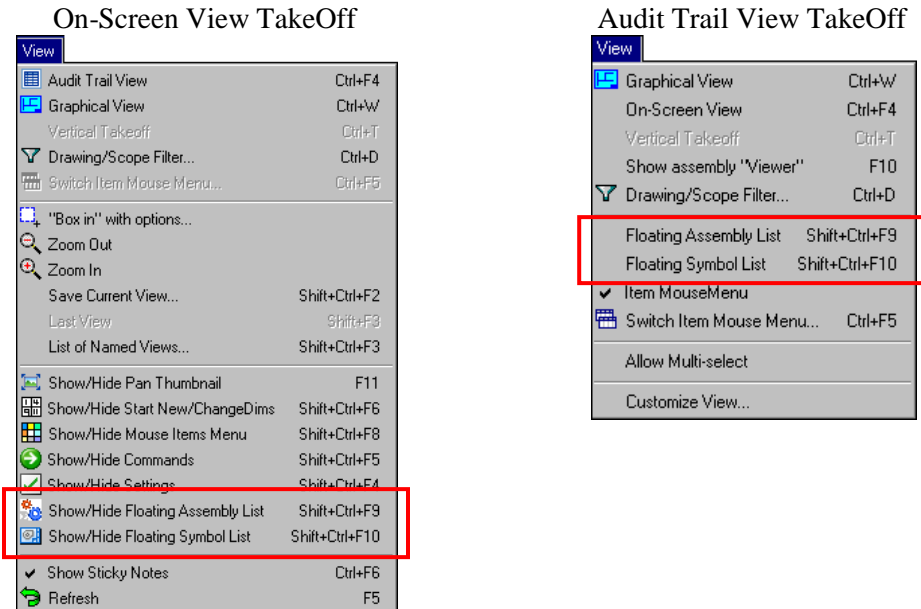
- Keep the same orientation
- Mirror (X or Y axis)
- Rotate (45° or 90° - clockwise or counter-clockwise)

On-Screen View/Audit Trail View TakeOff

The following enhancements are now available in both On-Screen View and Audit Trail View TakeOff.

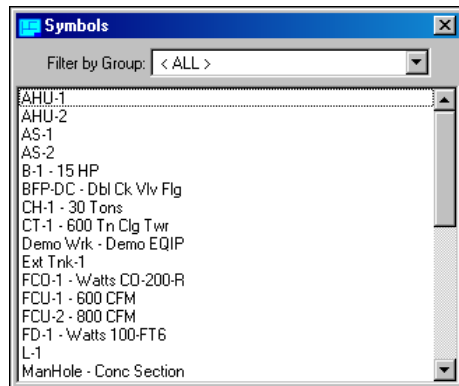
➤ Floating Assembly/Symbol Windows

This release of AutoBid Mechanical includes the ability to have assembly and symbol windows open and “floating” in the On-Screen View and Audit Trail View TakeOff windows.

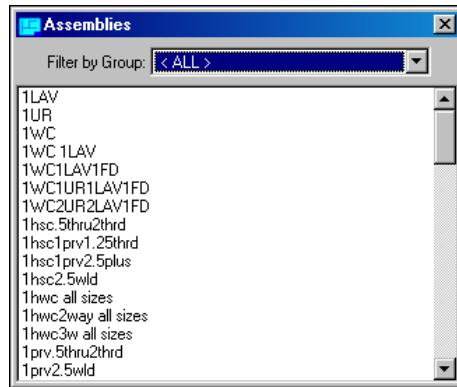


This feature saves you time when working in TakeOff. You can simply drag the item from the floating window to your drawing or Audit Trail.

- You can have more than one floating window open at any given time.
- The windows contain only those assemblies/symbols in the current project.
- The symbol list includes symbols and their descriptions.



- The Assembly list includes the name.



- Filtering in both lists is available.

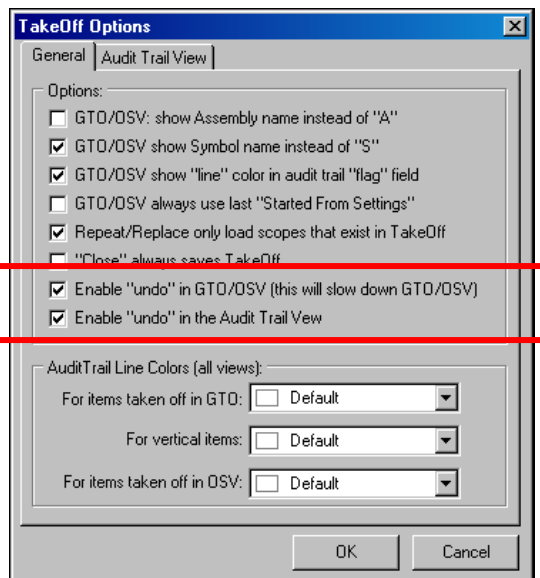
Note: Items without a dimension will be added automatically to your TakeOff. If a dimension is required, the Item window opens allowing you to enter the appropriate information before you continue.

General TakeOff

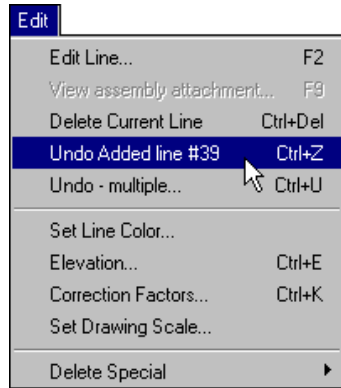
➤ “Undo” Functionality

TakeOff now offers a limited “Undo” feature that allows you to undo specific items in TakeOff.

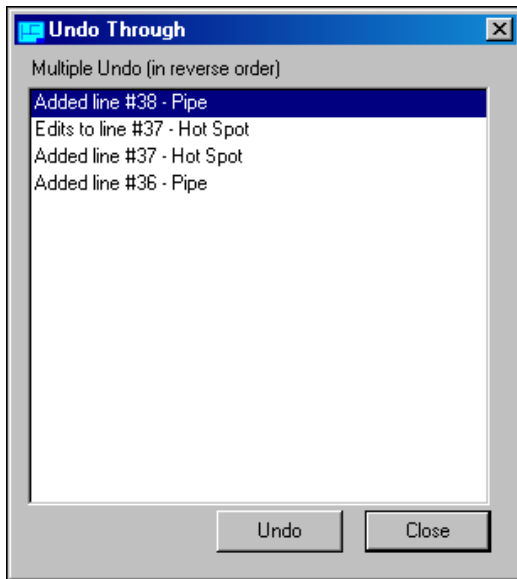
The “Undo” feature must be activated under Tools > Options. **Note:** Because this option may slow processing in TakeOff, this option is off by default. See the online help system for more information.



When the “Undo” feature is activated, and you perform tasks that allow this functionality, you can access the command under the **Edit** menu. The graphic below illustrates the menu with undoing a single deleted line command.



TakeOff retains a record of the items/lines you have added to your take off until you perform a task that resets the log (for instance, changing TakeOff methods or modifying any filtering set in your TakeOff). If you find you need to “undo” something *other* than the last thing you did, you can choose **Edit > Undo – multiple**. The Undo Through window displays.



AutoBid Mechanical keeps a log of all items taken off. **Note:** The log is cleared under certain circumstances, including but not limited to:

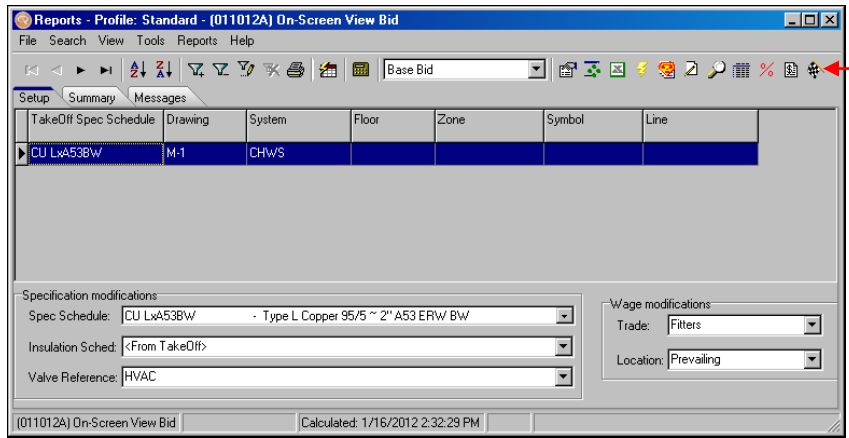
- Change TakeOff methods (views)
- Modify filters
- Exit TakeOff


- You can click on an item in the list and then click **Undo**. Keep in mind that you must undo items sequentially. For example, if you have 10 items in your list and you want to undo the third and sixth item, you must undo the first through fifth tasks also. You cannot simply undo the third and sixth task.
- You can also right-click and select **Undo All** in the Undo Through window.

Additional Modifications

➤ Material Price Override

This release of AutoBid Mechanical includes a new option in the Reports module to export material price data to a Microsoft® Excel® spreadsheet.

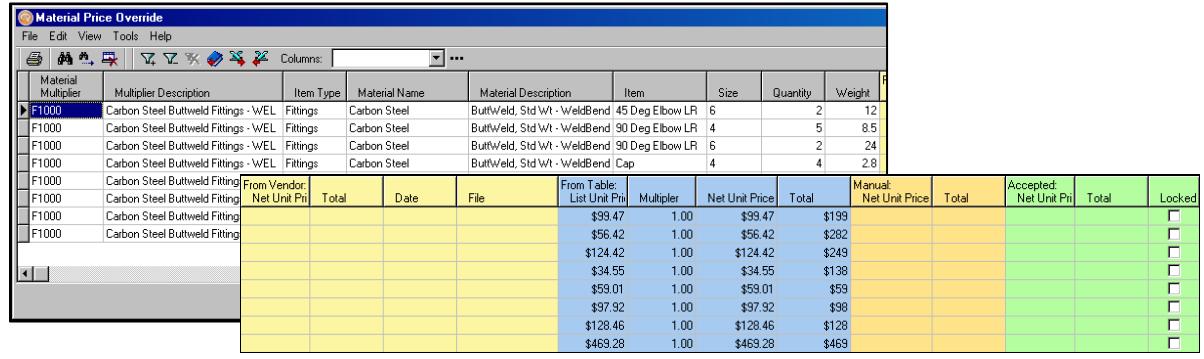


To open the Material Price Override module, click  on the Reports toolbar

This powerful feature allows you to:

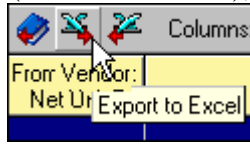
- Filter and export only those items for vendor quotes; for example, you might *always* obtain quotes on Carbon Steel items. This feature makes it easy to obtain quotes only on those items.
- Send a spreadsheet to vendors for completion and then import this data into the AutoBid Mechanical database.
- Obtain multiple price quotes for the same items by sending the spreadsheet to several preferred vendors. You can then review each and import only the pricing desired.
- Quickly add various vendor quotes to the AutoBid Mechanical database using the import functionality.
- Periodically verify prices with vendor. Simply export the data and provide the spreadsheet to the vendor for review.
- Export final prices to the spreadsheet to capture prices used on bid day for future reference.

The Material Price Override window includes various columns that are grouped together. Some contain data exported from the material pricing tables (non-editable); others are available for completion by you or by importing your vendor’s information from the Excel spreadsheet.



Material Multiplier	Multiplier Description	Item Type	Material Name	Material Description	Item	Size	Quantity	Weight	From Vendor Net Unit Price	Total	Date	File	From Table List Unit Price	Multiplier	Net Unit Price	Total	Manual Net Unit Price	Total	Accepted Net Unit Price	Total	Locked
F1000	Carbon Steel Butt Weld Fittings - WEL	Fittings	Carbon Steel	ButtWeld, Std Wt - WeldBend 45 Deg Elbow LR		6	2	12	\$99.47	\$199			\$99.47	1.00	\$99.47	\$199					
F1000	Carbon Steel Butt Weld Fittings - WEL	Fittings	Carbon Steel	ButtWeld, Std Wt - WeldBend 90 Deg Elbow LR		4	5	8.5	\$56.42	\$282			\$56.42	1.00	\$56.42	\$282					
F1000	Carbon Steel Butt Weld Fittings - WEL	Fittings	Carbon Steel	ButtWeld, Std Wt - WeldBend 90 Deg Elbow LR		6	2	24	\$124.42	\$249			\$124.42	1.00	\$124.42	\$249					
F1000	Carbon Steel Butt Weld Fittings - WEL	Fittings	Carbon Steel	ButtWeld, Std Wt - WeldBend Cap		4	4	2.8	\$34.55	\$138			\$34.55	1.00	\$34.55	\$138					
F1000	Carbon Steel Butt Weld Fittings - WEL	Fittings	Carbon Steel	ButtWeld, Std Wt - WeldBend Cap					\$59.01	\$59			\$59.01	1.00	\$59.01	\$59					
F1000	Carbon Steel Butt Weld Fittings - WEL	Fittings	Carbon Steel	ButtWeld, Std Wt - WeldBend Cap					\$97.92	\$98			\$97.92	1.00	\$97.92	\$98					
F1000	Carbon Steel Butt Weld Fittings - WEL	Fittings	Carbon Steel	ButtWeld, Std Wt - WeldBend Cap					\$128.46	\$128			\$128.46	1.00	\$128.46	\$128					
F1000	Carbon Steel Butt Weld Fittings - WEL	Fittings	Carbon Steel	ButtWeld, Std Wt - WeldBend Cap					\$469.28	\$469			\$469.28	1.00	\$469.28	\$469					

After you have created the data export file (illustrated above), select the data you want



included in the spreadsheet and then click on the toolbar. Select a location and file name. This spreadsheet can then be sent to a vendor for price completion.

When the vendor has completed entering *Net Unit Price* information in the spreadsheet, it is sent back to you. After you have reviewed pricing, you can then import the data into AutoBid Mechanical, saving you input time and eliminating errors. After you have imported pricing into your database, you must rerun calculations for the modifications to take effect.

The online help system includes detailed information on using this new feature. You can access help by pressing **F1** in any of the windows associated with the Material Price Override.