

# 2013 v2 RELEASE NOTES

## **Trimble® QuickPen AutoBid® Mechanical Software**

- Introduction
- Compatibility/Technical Support
- Database Modifications
- New Features/Enhancements

Trimble Navigation Limited  
116 Inverness Drive East, Suite 210  
Englewood, Colorado 80112  
800-234-3758

## **Legal Notices**

### **Copyright and Trademarks**

©1998-2013 Trimble Navigation Limited. All rights reserved.

Trimble and the Globe & Triangle logo are trademarks of Trimble Navigation Limited, registered in the United States and in other countries. QuickPen and AutoBid Mechanical are trademarks of Trimble Navigation Limited. Other brand and product names are trademarks or registered trademarks of their respective holders.

This publication, or parts thereof, may not be reproduced in any form, by any method, for any purpose, without the written consent of Trimble Navigation Limited.

### **Release Notice**

This is the Trimble QuickPen AutoBid Mechanical Software Release Notes (Revision A). It pertains to release 2013 v2 of the software.

The topics within this document are subject to change without written notice. Companies, names, and data used in any examples are fictitious. Screenshots included in the help topics may not be exactly as in the software application.

### **Edition**

Trimble® QuickPen AutoBid Mechanical Release Notes  
Part # ABMC8058.08.0813\_Release Notes 2013 v2

Monday, August 05, 2013 11:36 am

---

## Introduction

This document provides basic information about new features and modifications in release 2013 v2 of the Trimble® QuickPen AutoBid® Mechanical software. More detailed information can be found in the online help system.

### What You Receive With Release 2013 v2

- One Trimble QuickPen AutoBid Mechanical Installation DVD
- One AutoBid Mechanical *Let's Get Started* foldout
- One *Introduction to Trimble® Quick Link* flyer

### Upgrade Procedure

Please refer to the AutoBid Mechanical *Update Installation Instructions* document on the installation DVD for information on installation requirements. Trimble recommends that you print this document to help ensure proper operation of the software application after installation.

**Note** – *The AutoBid Mechanical update installs only program modifications and enhancements. Your existing tables, specifications, and estimates are not impacted in any way.*

### Trimble® Quick Link

The AutoBid Mechanical software includes an interface with the Trimble Quick Link licensing and communication system.

**Note** – *You must install the updated Quick Link software included on the DVD in order to maintain continued licensing of your product. Refer to the Update Installation Instructions document (also included on the DVD) for detailed instructions.*

---

## Compatibility/Technical Support

### Operating Systems

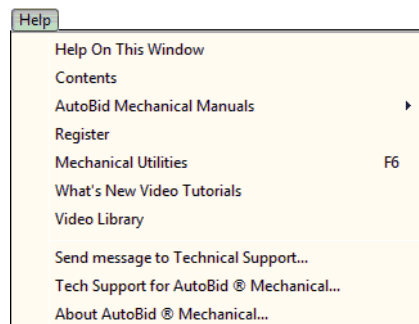
This version of the AutoBid Mechanical software is compatible with 32-bit and 64-bit Windows Vista, and Windows 7 operating systems. For a more complete listing of System Requirements, please go to our website under **Products / Estimating / AutoBid® Mechanical**.

### Trimble® QuickPen PipeDesigner 3D® Integration

The AutoBid Mechanical software includes the ability to export data in a format that can easily be imported into the PipeDesigner 3D® database. Refer to the online help in each of the software applications for detailed instructions.

### Help and Technical Support

#### Help Menu



The Help menu provides access to online help, as well as other utilities and information, which includes the following:

#### Update Videos

The *What's New Video Tutorials* command on the *Help* menu allows you to view a demonstration of the modifications and enhancements included in this release of AutoBid Mechanical. You have the option of installing the videos directly to your hard drive or viewing them from the AutoBid Mechanical Installation DVD.

---

## Video Libraries

The *Video Library* command on the *Help* menu provides you with demonstrations of many of the features in AutoBid Mechanical. You can view these as a refresher to training classes you have attended. You can also use them to become more familiar with the application prior to attending Training. You have the option of installing these directly to your hard drive or viewing them from the AutoBid Mechanical Installation DVD.

## Tech Support for AutoBid Mechanical

The Technical Support screen provides direct access to various support utilities.

- Additional support options, such as e-mail and online support
- System Information for your computer
- Submit a Technical Support Ticket

## Database Modifications

### Aquatherm

Aquatherm pipe and fittings are now available in the AutoBid Mechanical database.

- **Update users**  
If you want to add Aquatherm to your existing database, refer to the *Update Installation Instructions* document on the Installation DVD for step-by-step procedures.
- **New users**  
The Aquatherm items are automatically included when you add the New User Data to your system. Procedures are included in the hard copy Installation Guide included with your software.

---

## New Features/Enhancements

The following enhancements have been added to the AutoBid Mechanical software in Release 2013 v2:

### Pricing Service

#### TRA-SER®

This release of AutoBid Mechanical is integrated with the TRA-SER pricing service (Trade Services Company, LLC). TRA-SER is an online plumbing and mechanical database, containing up-to-date pricing for import directly into your AutoBid Mechanical database. Using the TRA-SER database streamlines your bidding and estimating processes, saving you time, increasing your accuracy, and will help you realize more profit.

The online help system, as well as informational videos, are included that walk you through the process of using the TRA-SER service in the AutoBid Mechanical software.

**Note** – *To use the pricing service, you must subscribe to TRA-SER services (for Plumbing and Mechanical). Please contact your Trimble sales representative for details.*

### On-Screen View TakeOff

#### Multiple Selection “Box-in” and “Copy/Move”

Release 2013 v2 allows multiple selection sets while using the box-in selection set options (*Box in with options* and *Copy/Move*).

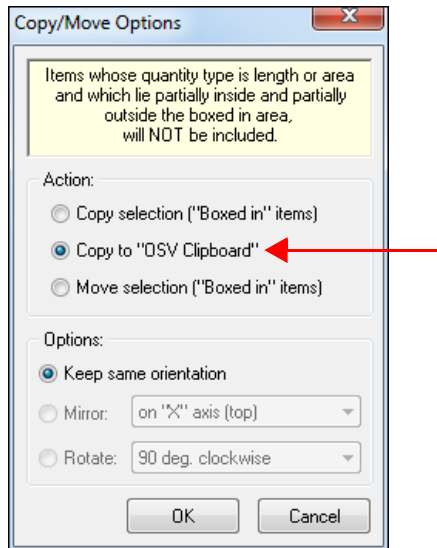
- The multiple selections can be anywhere within the drawing.
- The number of box-in selections is not limited within the drawing.

When you execute the Box in with options or Copy/Move commands, hold the keyboard **Ctrl** key down while selecting areas. Release the **Ctrl** key to cancel the multiple selection process. Click anywhere in the drawing or click the toolbar button again. The box-in selection window opens. You can then complete the intended procedure.

---

## Copy Selection to Clipboard

The AutoBid Mechanical software now allows you to copy a portion of your drawing to the clipboard, making it available for copying to another drawing within the same project.

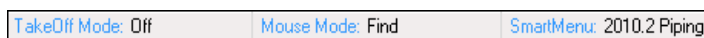


When the selection is copied to the clipboard, you can then go to another drawing and use the shortcut **Ctrl+V** to paste the selection in the desired location. You can also go to the **OSV Tools** menu and click **Insert/Paste from OSV Clipboard**.

**Note** – *Copying to the clipboard is also available when using the multiple selection procedure.*

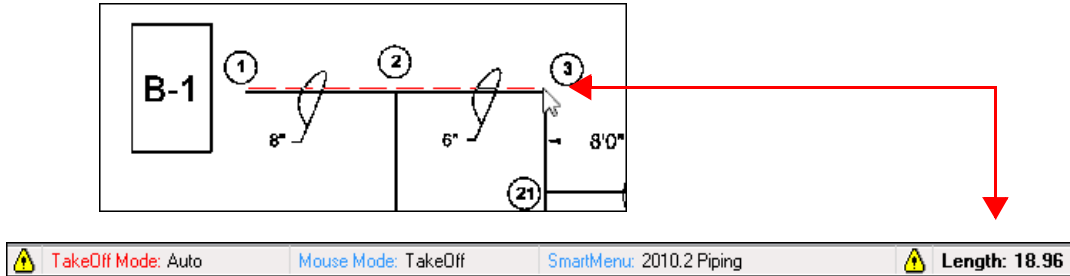
## TouchMenu/Smart Menu

The status bar in the On-Screen View TakeOff window now displays the current TouchMenu or Smart Menu in use. This allows you to quickly view menu assignment while in TakeOff.

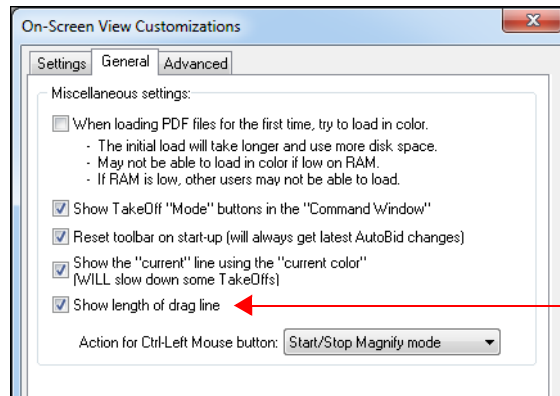


## Drag Line Length Display

You can now choose to display the length of the drag line in On-Screen View TakeOff. This allows you to see the length of a pipe in the status bar when placing pipe between points.



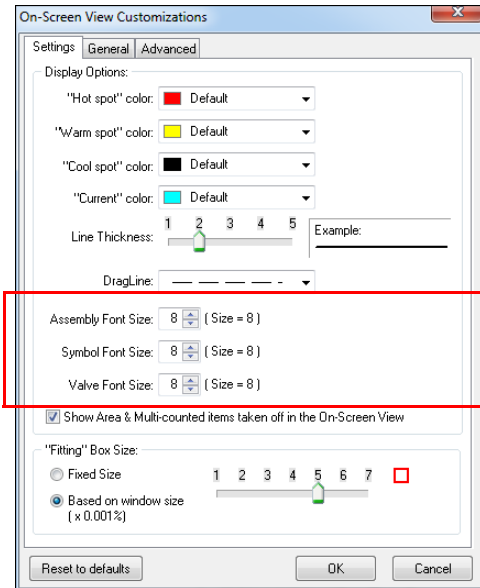
The setting for displaying the drag line length is under *OSV Tools / On-Screen View Customizations / General* tab.





## Font Size Controls

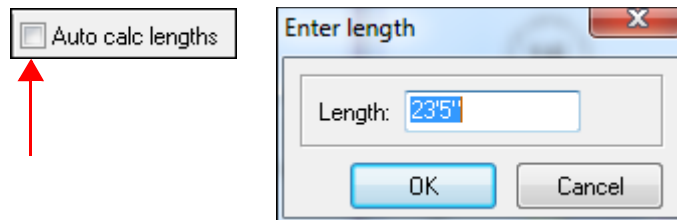
The AutoBid Mechanical 2013 v2 software update includes options to control the font size for assemblies, symbols, and valves in On-Screen View TakeOff. These settings are available under *OSV Tools / On-Screen View Customizations / Settings* tab.



## Not to Scale Drawings

From time-to-time, you may need to take off a not to scale drawing (typically Isometric drawings). This release of the AutoBid Mechanical software allows you to "turn-off" automatic calculation of lengths. This allows you to define the length manually.

When you clear the *Auto calc lengths* checkbox on the On-Screen View TakeOff toolbar, and then take off a run of pipe, you can enter the length in the Enter Length dialog box.



---

## Graphical/Audit Trail TakeOff

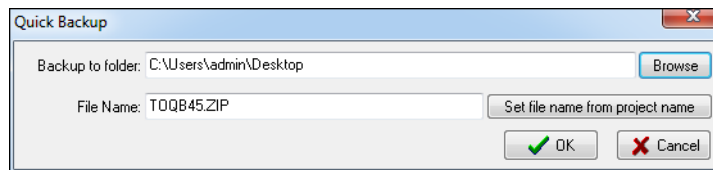
### TouchMenu

This release of the AutoBid Mechanical software allows you to add a specific Symbol ID to your TouchMenu (rather than only bringing up a selection list).

## TakeOff (All Views)

### Quick Backup

When you process a Quick Backup from the File menu within TakeOff, you can now define the location and name of the backup file.



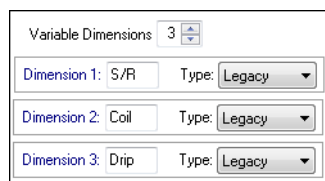
## Assemblies

### Variable Dimension Types

You can now define a Variable Dimension type when creating or modifying assemblies. The types include:

- Count
- Feet / Meters
- Inches / Millimeters
- Legacy

**Note** – *The Legacy type processes the assemblies as in previous releases.*



When you select a Variable Dimension type, the assembly is processed based on the specific selection. During calculations, if the dimension type does not match the takeoff, it will be converted and processed according to your project setup.

---

### **Last Item Dimension**

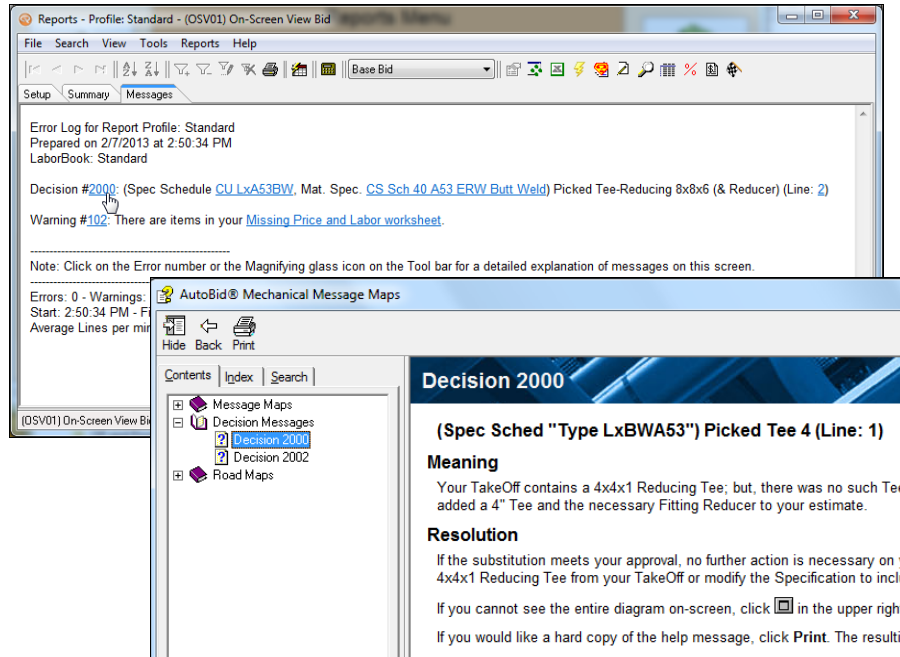
When you take off an assembly with variable dimensions, the AutoBid Mechanical software now automatically uses the size information from the last item. This eliminates the need to enter dimensions after the assembly is taken off.

## Reports

### Calculation Messages

When you run Calculations in the Reports module, the *Messages* tab now provides links that will help you correct issues listed.

- When you see a Error, Decision, or Warning number, you can click on it to go directly to the Message Maps online help file..

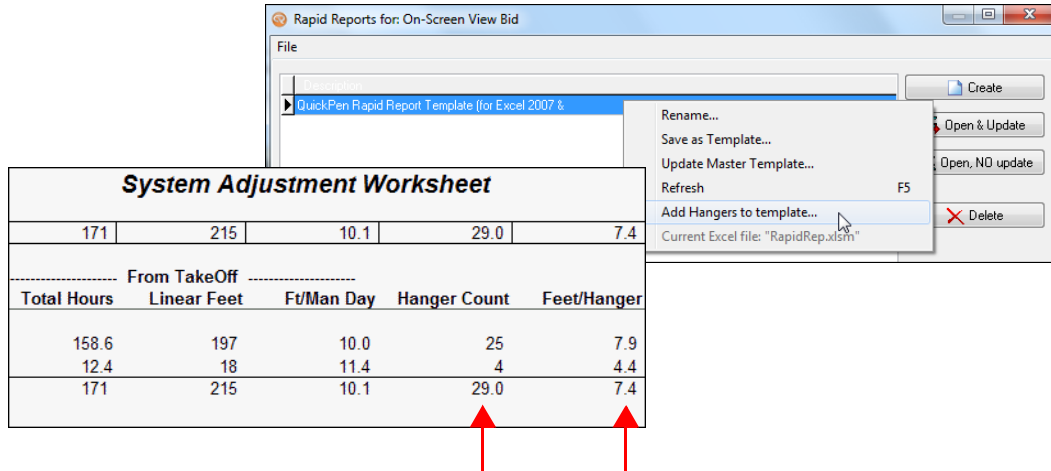


- The second link goes directly to the module with the issue. You can easily make corrections based on the information contained in the associated online Message Map topic.

## Rapid Reports

New columns are now available on the System Adjustment Worksheet: Hanger Count and Feet/Hanger.

To display the new columns in your Rapid Reports Template, go to the main Rapid Reports screen and then right-click. Select **Add Hangers to template** from the menu. To view the changes made, click **Open & Update**.




The screenshot shows the 'Rapid Reports for: On-Screen View Bid' window. A file list contains 'QuickPen Rapid Report Template (for Excel 2007 &...)'. A context menu is open over this file, with 'Add Hangers to template...' selected. Other menu items include 'Rename...', 'Save as Template...', 'Update Master Template...', 'Refresh' (F5), and 'Delete'. To the left, the 'System Adjustment Worksheet' table is visible, with red arrows pointing to the 'Hanger Count' and 'Feet/Hanger' columns in the bottom row.

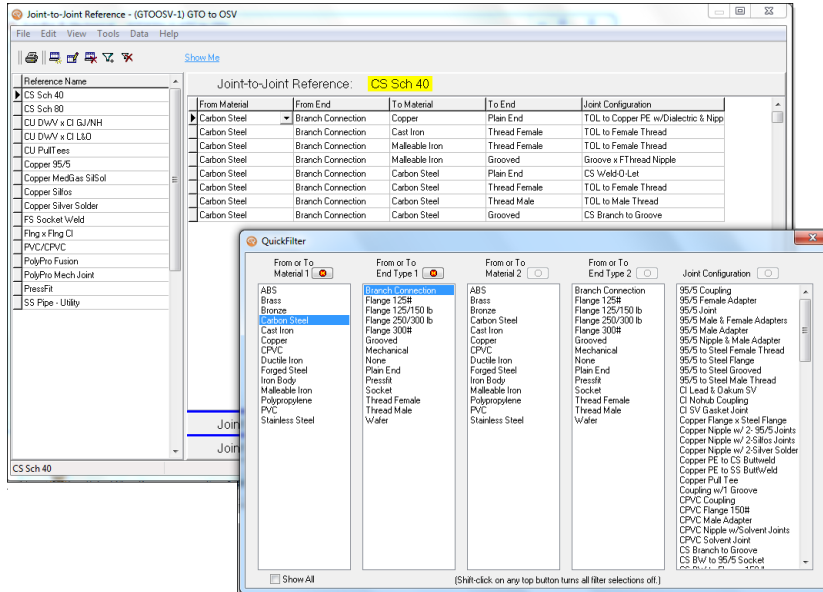
System Adjustment Worksheet				
171	215	10.1	29.0	7.4
----- From TakeOff -----				
Total Hours	Linear Feet	Ft/Man Day	Hanger Count	Feet/Hanger
158.6	197	10.0	25	7.9
12.4	18	11.4	4	4.4
171	215	10.1	29.0	7.4


**Note** – Trimble recommends that you review the changes made to the template. If you are satisfied, update your master template to make the changes permanent. See the online help system for more details.

## Tables

### Joint-to-Joint Reference Filters

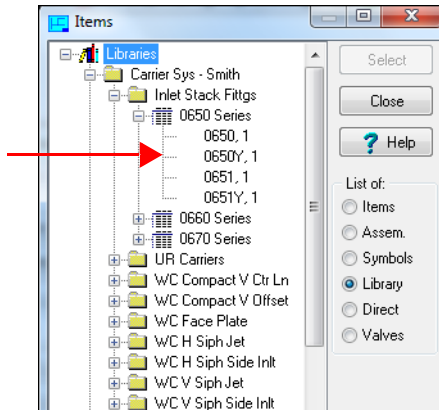
In the Joint-to-Joint Reference window, you can use the new quick filter to locate the exact item you need. When you click  on the toolbar, the QuickFilter window opens, allowing you to select material, end types, and joint configuration options. As you make your selections, data corresponding to your selection displays in the Joint-to-Joint table.



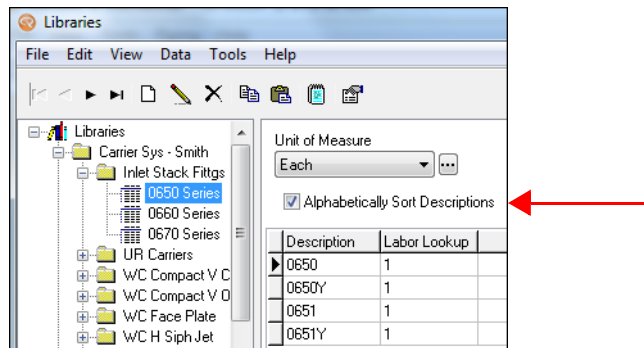
You can cancel filtering in any column by clicking  above any given filtered column.

### Library Tree Sort

When you open the Library tree from within TakeOff, the data is now sorted alpha/numeric by default. This makes locating the item you want to select easier.



**Note** – *Sorting in the Library tree is controlled from within the Library table. You can clear this checkbox if you do not want sorting to apply to specific items.*



## Scopes

The Scope name field now allows you to enter up to 32 characters.

**Note** – *The alternate field allows 27 characters due to column width limitations in Microsoft® Excel®.*

## PipeDesigner 3D® Software Integration

### PipeDesigner 3D® Route Line Exports

This release of the AutoBid Mechanical software includes the ability to export all main and branch runs created in On-Screen View TakeOff and Graphical View TakeOff as route lines. This command is located under the File menu in all methods of TakeOff.

**Note** – *Although the command is available in Audit Trail View TakeOff, the takeoff must be created in On-Screen View or Graphical View TakeOff.*