

2014 v3 RELEASE NOTES

Trimble® AutoBid® Mechanical Software

- Introduction
- Compatibility/Technical Support
- Database Modifications
- New Features/Enhancements

Trimble Navigation Limited
116 Inverness Drive East, Suite 210
Englewood, Colorado 80112
800-234-3758

Legal Notices

Copyright and Trademarks

©1998-2014 Trimble Navigation Limited. All rights reserved.

Trimble and the Globe & Triangle logo are trademarks of Trimble Navigation Limited, registered in the United States and in other countries. Trimble AutoBid Mechanical and Trimble Quick Link are trademarks of Trimble Navigation Limited. Other brand and product names are trademarks or registered trademarks of their respective holders.

This publication, or parts thereof, may not be reproduced in any form, by any method, for any purpose, without the written consent of Trimble Navigation Limited.

Release Notice

The topics within this document are:

- Subject to change without written notice.
- Companies, names, and data used in any examples are fictitious.
- Screenshots included in the help topics may not be exactly as in the software application.

Edition

This is the Trimble® AutoBid® Mechanical Software Release Notes (Revision A) document. It pertains to release 2014 v3 of the software.

Part # ABMC8058.08.1014_Release Notes 2014 v3
Tuesday, October 28, 2014 6:26 am

Introduction

This document provides basic information about new features and modifications in release 2014 v3 of the Trimble® AutoBid® Mechanical software. More detailed information can be found in the online help system.


What You Receive with Release 2014 v3

- One Trimble AutoBid Mechanical Installation DVD
- One AutoBid Mechanical *Let's Get Started* foldout
- One *Introduction to Trimble® Quick Link* flyer

Upgrade Procedure

Please refer to the AutoBid Mechanical *Update Installation Instructions* document on the installation DVD for information on installation requirements. Trimble recommends that you print this document to help ensure proper operation of the software application after installation.

Note – *The AutoBid Mechanical update installs only program modifications and enhancements. Your existing tables, specifications, and estimates are not impacted in any way.*

 **Tip** – From time-to-time, Trimble may have new data available. New data can be merged into your existing tables. This document contains information on the data available. Step-by-step procedures are outlined in the *Update Installation Instructions* document.

Trimble® Quick Link

The AutoBid Mechanical software includes an interface with the Trimble Quick Link licensing and communication system.

Note – *You must install the updated Quick Link software included on the DVD in order to maintain continued licensing of your product. Refer to the Update Installation Instructions document (also included on the DVD) for detailed instructions.*

Compatibility/Technical Support

Operating Systems

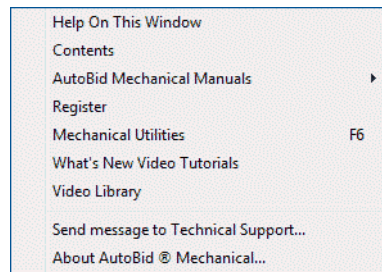
This version of the AutoBid Mechanical software is compatible with 32-bit and 64-bit Windows® 7 and Windows 8 operating systems. For a complete listing of System Requirements/Technical Specifications, please go to our website (mep.trimble.com) under *Products / Estimating / Trimble® AutoBid® Mechanical / Technical Specifications*.

Trimble® PipeDesigner 3D® Integration

The AutoBid Mechanical software includes the ability to export data in a format that can easily be imported into the PipeDesigner 3D® database. Refer to the online help in each of the software applications for detailed instructions.

Help and Technical Support

Help Menu



The Help menu provides access to online help, as well as other utilities and information, which includes the following:

Update Videos

The *What's New Video Tutorials* command on the *Help* menu allows you to view a demonstration of the modifications and enhancements included in this release of AutoBid Mechanical. You have the option of installing the videos directly to your hard drive or viewing them from the AutoBid Mechanical Installation DVD.


Video Libraries

The *Video Library* command on the *Help* menu provides you with demonstrations of many of the features in AutoBid Mechanical. You can view these as a refresher to training classes you have attended. You can also use them to become more familiar with the application prior to attending Training. You have the option of installing these directly to your hard drive or viewing them from the AutoBid Mechanical Installation DVD.

Technical Support for AutoBid Mechanical

The About AutoBid® Mechanical screen provides direct access to various support utilities.

- Additional support options, such as email and online support
- System Information for your computer
- Submit a Technical Support Ticket

 **Tip** – You can also submit a Technical Support ticket by going to *Help / Send Message to Technical Support*.

Database Modifications

This release of the AutoBid Mechanical software includes additional items and labor available for addition to your database.


Piping Items

- Viega Stainless Steel (304 & 316) ProPress pipe and fittings
- Viega Carbon Steel MegaPress & MegaPressG pipe and fittings

MCAA Labor

The latest MCAA Labor Update (6/12/14) is available for merging into your existing database.

Note – *All new database items are included in the New User Data file included with your software update. If you want to add these items to your existing database, you must do it through the on-demand restore feature (in the main AutoBid Mechanical window under the **File** menu). Refer to the Database Update section in the Update Installation Instructions document for detailed information.*

 **Tip** – Trimble strongly recommends that you follow the instructions carefully to ensure your application runs properly after installation. Merging this data into your database, in most cases, does not affect existing data.


New Features/Enhancements

The following enhancements have been added to the AutoBid Mechanical software.

Trade Service Supplier Xchange™

The 2014 v3 release of the AutoBid Mechanical software includes an interface with the Trade Service Supplier Xchange system. This system dramatically speeds the bidding process by connecting you to your preferred supplier's pricing data in real time.

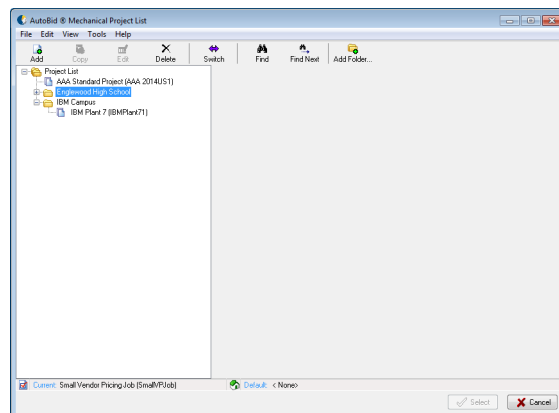
You electronically submit a list of items to your supplier from AutoBid Mechanical and the list is instantly matched to your supplier's pricing file. It is then returned to you - complete with pricing. You can then add the price quote to the bid.

 **Tip** – You must subscribe to the Trade Service Supplier Xchange service in order to use this feature. You can refer to the [Trade Service](#) website for more details or contact (800)701-7003 for information on subscribing to the service.

Complete details on using this interface are included in the AutoBid Mechanical online help system.


Project List

The project list now offers the ability to view projects in a tree. This feature provides better organization of your projects, making it easier to find projects in larger lists.



This feature allows you to:

- Group related projects together using folders
- Create projects under specific folders
- Move existing projects into desired folder
- View basic project information, including “lock” status
- Date the project was last accessed (for archive purposes)

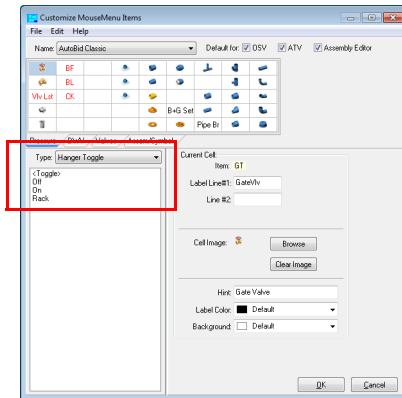
 **Tip** – If desired, you can continue to use the Project List grid view, go to *View / Switch to Table View*. When you select this view, it becomes the default in your system.

TakeOff


On-Screen View TakeOff

- **Hanger On/Off**

You can now add a Hanger On/Off toggle to the Item Mouse Menu.

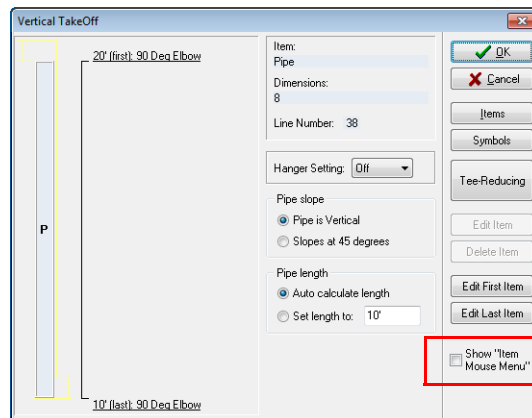


The hanger toggle on the MouseMenu provides easy access to turning hangers on and off while in On-Screen View TakeOff.

 **Tip** – You can add this command to any desired tab on the Item MouseMenu.

- **Vertical TakeOff**

The AutoBid Mechanical software now allows you to display the MouseMenu while in the Vertical TakeOff window.



This feature allows you to select items directly from the MouseMenu instead of drilling down through the Items dialogs.

- **Branch From Command**

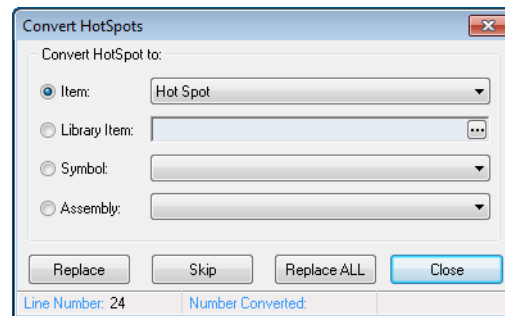
The Branch From command now recognizes when you are working with a vertical run. When you click the Branch From command and then click on a vertical run, the AutoBid Mechanical software asks if you want to branch from the top or bottom of the fitting.

Note – *Because of this enhancement, the Branch from Vertical command is no longer required. It has been removed from the On-Screen View Commands.*

General TakeOff

- **Hot Spot Conversion**

This release of the AutoBid Mechanical software offers an option to convert hot spots to a specific library item, symbol, or assembly. You can convert all hot spots to the same item or convert hot spots selection-by-selection to what you want.



This feature helps you ensure that the proper item, symbol, or assembly is added to your TakeOff, improving accuracy.

- **Add Drop/Rise**

The Add Drop/Rise functionality has been enhanced to allow you to specify an end item, instead of generating a hot spot. This allows you to enter an Add Drop/Rise faster and more accurately.

