

QuickPen

AutoBid[®]
SheetMetal

Release
Notes



©1998-2012 Trimble Navigation Limited. All rights reserved.

QuickPen is a trademark of Trimble Navigation Limited registered in the United States and/or in other countries. AutoBid® SheetMetal and Trimble® Quick Link are trademarks or registered trademarks of Trimble Navigation Limited. All other trademarks are the property of their respective owners.

Published by: Trimble Navigation Limited
QuickPen Division
384 Inverness Parkway, Suite 200
Englewood, Colorado 80112
(800) 234-3758

Edition: AutoBid® SheetMetal Release Notes, 2012 v2
November 1, 2012
Part # ABSM8060.08.1112_Release Notes_2012.2

This publication, or parts thereof, may not be reproduced in any form, by any method, for any purpose, without the written consent of Trimble Navigation Limited.

AutoBid® SheetMetal 2012 v2 Release Notes

What You Receive with Release 2012 v2

- One Installation DVD
- AutoBid SheetMetal “*Let’s Get Started*” fold-out

Note: The AutoBid SheetMetal update installs only program modifications and enhancements. Your existing tables, specifications, and estimates are not impacted in any way.

AutoBid SheetMetal Release 2012 v2 Online Documentation

Note: Adobe Reader® is required on your system to view much of the online documentation. If this software is not already installed on your computer, a link to the Adobe website where you can obtain a free download is available on the AutoBid SheetMetal Installation DVD.

Documentation pertaining to this release of AutoBid SheetMetal is available online as follows:

- ***Before Installation:***
 - ◆ From the AutoBid SheetMetal DVD:
 - *Release Notes*
 - *Update Installation Instructions*
 - *ReadMe*

Note: If you are reading this document online, QuickPen strongly recommends that you print the above documents and review them thoroughly prior to installing this update.

- ***After Installation:***
 - ◆ From the Windows Start menu
 - ◆ From the AutoBid SheetMetal Bid Administrator Help menu
 - ◆ From the AutoBid SheetMetal Global Data Administrator Help menu
 - ◆ Pressing **F1** in any AutoBid SheetMetal window

Trimble® Quick Link

AutoBid SheetMetal includes an interface with Trimble® Quick Link, a licensing and communication software application. Installation of Trimble Quick Link is *required* to provide continued licensing of AutoBid SheetMetal.

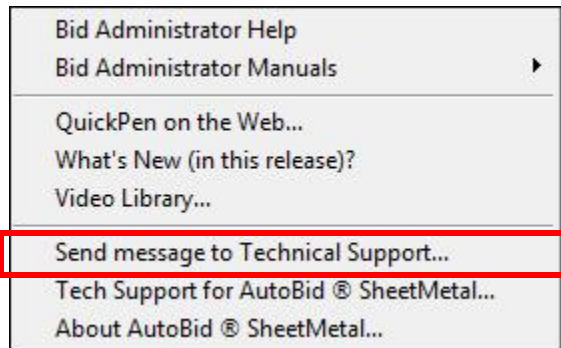
Trimble Quick Link Features

- ***Virtual Computer Users***
If you have AutoBid SheetMetal installed on a virtual machine, you no longer have to contact Technical Support to renew your licenses every 90 days.
- ***Technical Support Tickets***
You can send Technical Support requests by using the Quick Link communication feature in AutoBid SheetMetal (see below for more information). This automatically adds your request to the QuickPen support queue.
- ***Easier License Check-Out Functionality***
To checkout or borrow a license, all you need is an initial internet connection and proper security (Login name and Password).
- ***License Administration Control***
Using the Trimble® Quick Link Management Studio, you can view license availability, update licensing, and obtain new licensing.
- ***Server Moves***
In the event you need to move AutoBid SheetMetal from one server to another, you can easily accomplish this without contacting QuickPen Technical Support for licensing issues.
- ***Share licenses***
Licenses can be shared between multiple offices; however, the Trimble® Quick Link Hub must be installed at all locations.

Technical Support Ticket

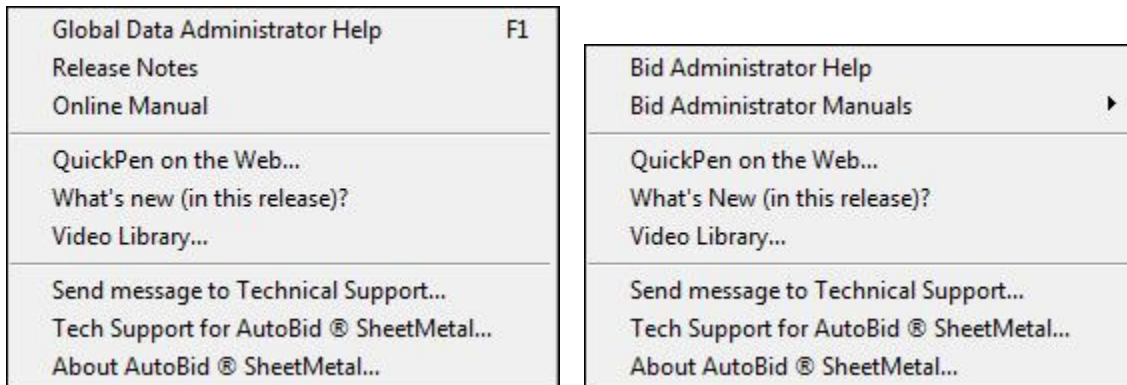
When you have questions or issues requiring contact with QuickPen Technical Support, you can simply enter these and the Trimble Quick Link software application sends your request, adds it in the QuickPen Technical Support queue, and creates a support ticket. You will be contacted in a timely manner by a Technical Support Representative to discuss your request.

1. Go to the **Help** menu in the Global Data Administrator or the Bid Administrator. *Note:* The graphic below illustrates the Help menu in the Bid Administrator.



2. Click **Send message to Technical Support**.
3. In the Send message to QuickPen Technical Support dialog, enter your **Question/Issue**.
4. If desired, click on the Screen Shot tab and paste an applicable shot illustrating the Question/Issue.

Help Menu Commands and Technical Support



The Help menu provides access to online help, as well as other utilities and information, which includes the following:

Update Videos

The **What's New (in this release)?** command on the **Help** menu allows you to view a demonstration of the modifications and enhancements included in this release of AutoBid SheetMetal. You have the option of installing the videos directly to your hard drive or viewing them from the AutoBid SheetMetal Installation DVD.

Video Libraries

The **Video Library** command on the **Help** menu provides you with demonstrations of many of the features in AutoBid SheetMetal. You can view these as a refresher to training classes you have attended. You can also use them to become more familiar with the application prior to attending a training class. You have the option of installing these directly to your hard drive or viewing them from the AutoBid SheetMetal Installation DVD.

Tech Support for AutoBid SheetMetal

The Technical Support screen provides direct access to various support utilities.

- Send message to QuickPen Technical Support (opens support ticket)
- Additional support options, such as e-mail and online support
- System Information for your computer

Update Installation Information

Instructions for proper installation of this update are outlined in a separate document included on the AutoBid SheetMetal Installation DVD. QuickPen suggests that you print, review, and follow the instructions closely to help ensure that software applications function properly after installation.

Note: You must install Trimble® Quick Link included on the installation DVD to ensure continued communication between the two software applications. QuickPen strongly recommends that you print the documents included on the installation DVD and follow the instructions carefully to help ensure AutoBid SheetMetal functions properly after updating the applications.

AutoBid® SheetMetal

2012 v2 Release Highlights

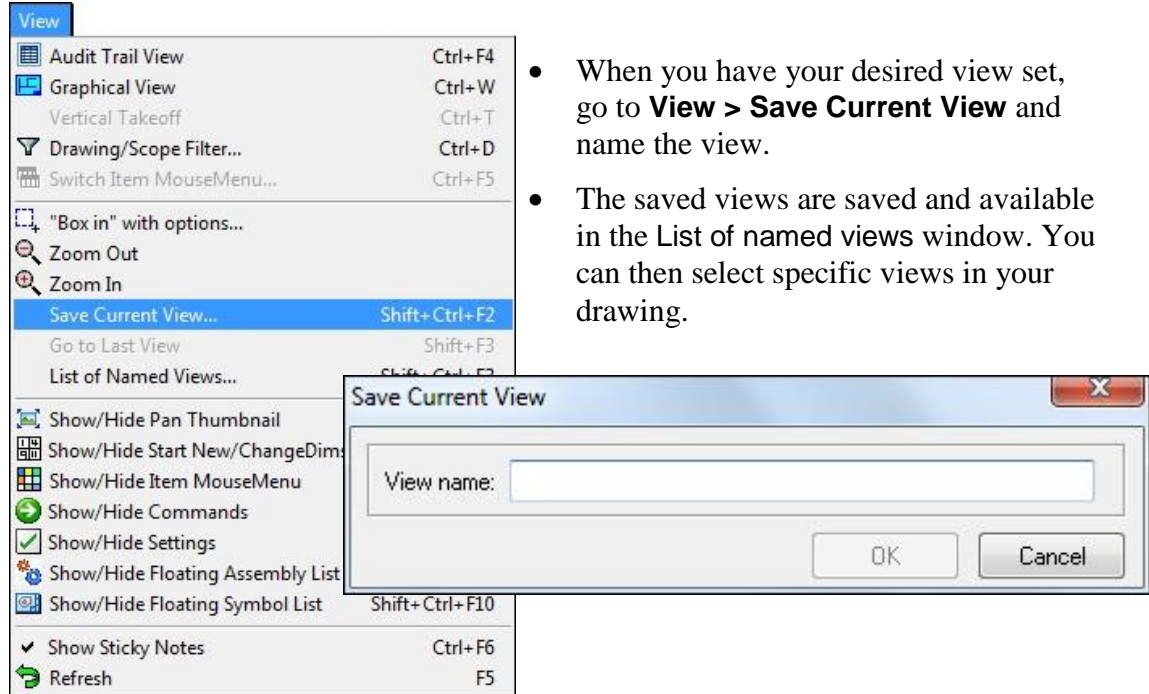
The AutoBid SheetMetal system enhancements offer customers the following new features and enhancements:

On-Screen View TakeOff

This release of AutoBid SheetMetal includes enhancements/modifications to TakeOff. For more detailed information on these features, refer to the online help system.

➤ Named Views

This release of AutoBid SheetMetal includes a new feature that allows you to save a TakeOff view



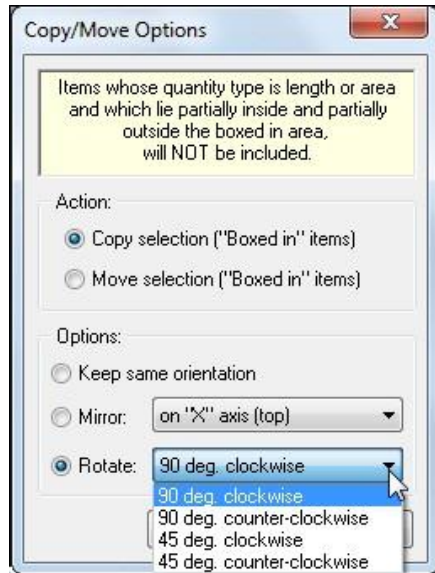
- When you have your desired view set, go to **View > Save Current View** and name the view.
- The saved views are saved and available in the List of named views window. You can then select specific views in your drawing.

This feature may prove especially helpful if you have a drawing with notes. You can zoom in on the notes and save the view. As you are taking off your drawing and come across a note, you can quickly switch over to the “notes view”, read the notes, and quickly go back to the previous view to continue your take off.

You can also add the menu shortcuts to your Smart Menu™ by GTCO and your MouseMenu. This will make it even more convenient to move between views while working in TakeOff.

➤ Rotate with Copy/Move

When processing copy or move functions, AutoBid SheetMetal, Release 2012 v2, allows you to rotate your items at 45° or 90°.

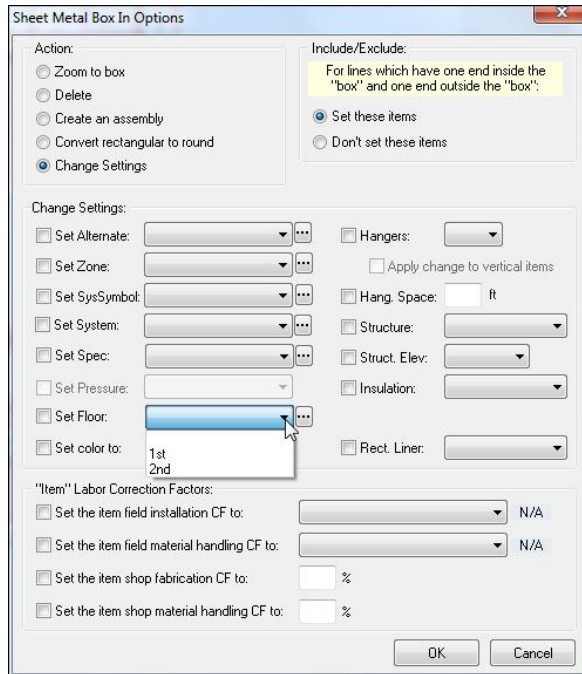


When you make your Copy/Move selection, you can specify the following in the Options pane:

- Keep the same orientation
- Mirror (X or Y axis)
- Rotate (45° or 90° - clockwise or counter-clockwise)

➤ Box-in with Options / Set Floor

You can now use the Box-in with Options command to set a Floor. You must select the Change Settings option button to activate this setting.



This allows you to box-in a specific area on your drawing and then set a floor for the selected area.

➤ Show Current Line

In this release of AutoBid SheetMetal, when you click on a specific audit trail line, the corresponding item in your takeoff drawing is also selected/highlighted. The line color is defined under OSV Tools > On-Screen View Customizations.

Line #	Item	Dimensions	Quantity	Flags
37	End Cap	10	1	H
38	Duct - Round	16	7'2"	H
39	Elbow-45 Degree	16	1	H
40	Duct - Round	16	5'4"	H
41	End Cap	16	1	H
42	Duct - Rectangular	20 x 12	7'7"	H
43	End Cap	20 x 12	1	H
44	Duct - Rectangular	20 x 12	7'2"	H

➤ Elevation Settings

In this release of AutoBid® SheetMetal, you can select from elevation setting lists in the Next Item Settings dialog.

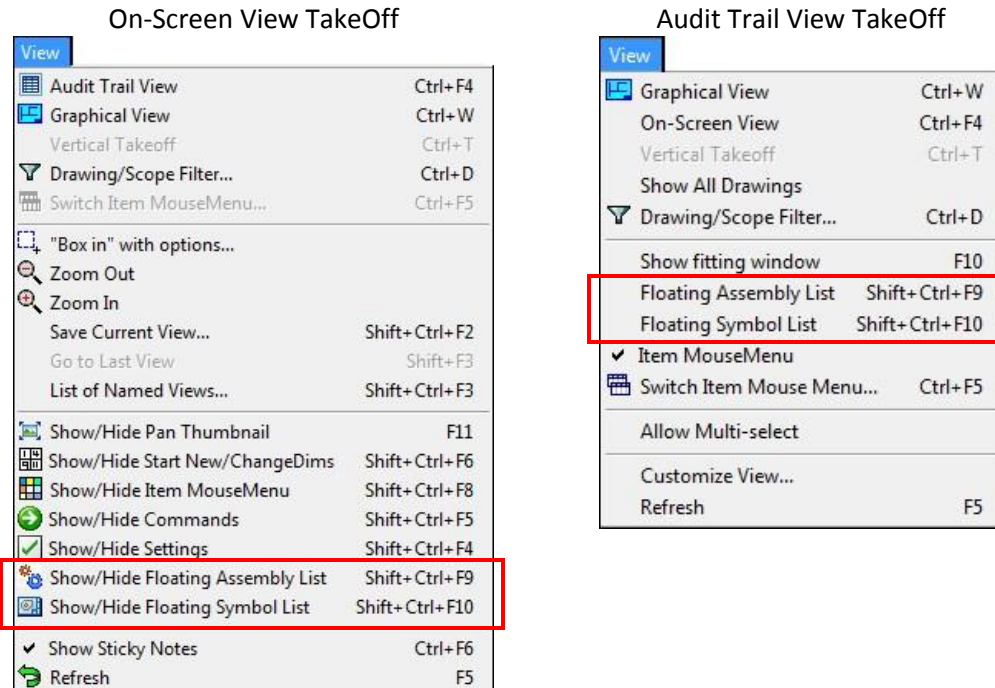
The image shows a screenshot of the "Next Item Settings" dialog box. The "Fitting Specs" section is highlighted in yellow and contains the following settings: Scale: 1/8, Drawing: 15.11, System: Alum LP, Specs: AL SMACNA LP, Pressure: 2" W.G., Floor: (empty), Zone: (empty), SysSymbol: (empty), and Alt. Bid: (empty). Below this is a checkbox for "Use 'alternate' round duct" which is unchecked. The "Trit In:" and "Trit Out:" fields are set to "<None>". The "Rct. Liner:" field is also set to "<None>". The "Insulate:" field is set to "<None>". The "Structure:" field is set to "Bar Joists". The "Elev." section is highlighted with a red box and contains: "Struct: 0'", "Item Elev: 0' (Btm)", "Hanger: On", and "Space: (empty)". At the bottom, there is a "CFs" field set to "0.0%".

On-Screen View/Audit Trail View TakeOff

The following enhancements are now available in both On-Screen View and Audit Trail View TakeOff.

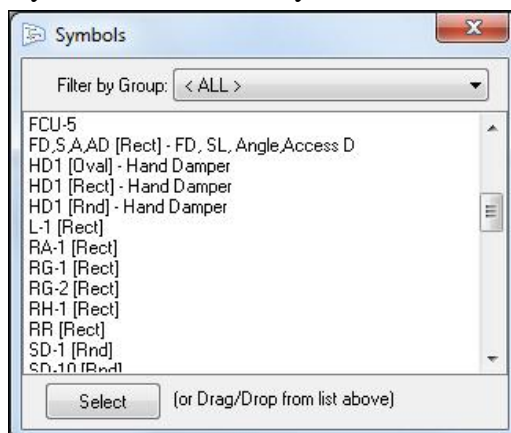
➤ Floating Assembly/Symbol Windows

This release of AutoBid SheetMetal includes the ability to have assembly and symbol windows open and “floating” in the On-Screen View and Audit Trail View TakeOff windows.

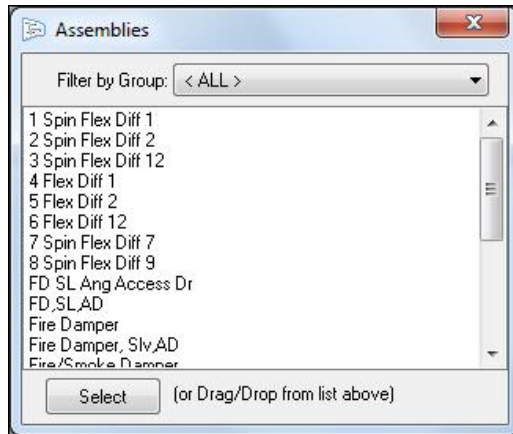


This feature saves you time when working in TakeOff. You can simply drag the item from the floating window to your drawing or Audit Trail.

- You can have more than one floating window open at any given time.
- The windows contain only those assemblies/symbols in the current project.
- The symbol list includes symbols and their descriptions.



- The Assembly list includes the name.

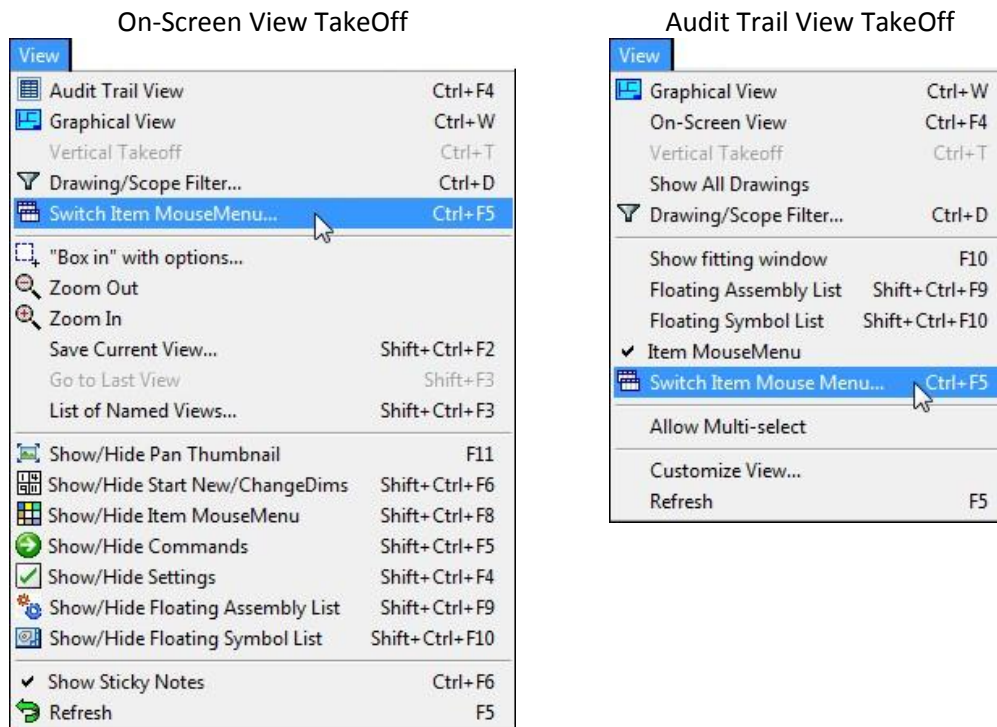


- Filtering in both lists is available.

Note: Items without a dimension will be automatically added to your TakeOff. If a dimension is required, the Item window opens allowing you to enter the appropriate information before you continue.

➤ Item MouseMenu

AutoBid SheetMetal offers a command that allows you to quickly switch from one active item MouseMenu to another during a TakeOff session.



When you close and reopen TakeOff, the default MouseMenu is available (or displays).

Audit Trail View TakeOff

➤ New Toolbar

A new toolbar is now available in the “Power User” layout in Audit Trail View TakeOff.



This toolbar provides easy access to Drawing/Scope filtering, Find/Search and Replace commands, MouseMenu options, and switching between the TakeOff views.

Imports

➤ Trimble® Design Link

This release of the AutoBid® SheetMetal software includes an enhanced Trimble Design Link import. Features of the enhanced import procedure includes:

- Import of duct and fittings, including scopes and user-defined fields
- Mapping of systems, insulation/liner, single/doublewall, pressure classes, material, equipment, and Trimble Design Link blocks
- More accurate handling of hangers and connector calculations
- Purchased items import as expected

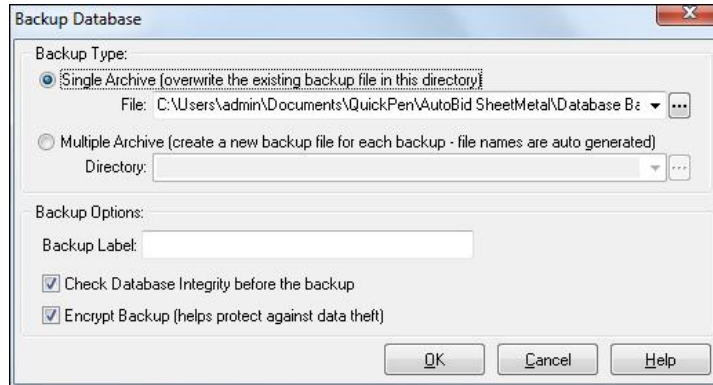
Note: Items will import into the AutoBid SheetMetal software as connected, non-adjusting Audit Trail TakeOff. All items will import in run order based on how they were entered in the Trimble Design Link drawing. All duct lengths in the Audit Trail will match the lengths entered in the CAD software.

The Trimble Design Link import command is in the Bid Administrator under **File > Import from Trimble® Design Link**. Refer to the Trimble® Design Link online help system for more information on exporting your drawing information.

DataServer

➤ Full Backup

An additional option to encrypt your backups is now available in the full backup dialog. This provides better security in your backup files.



You must have proper security rights to access these options.

Note: This option is available only in the *full backup* procedure. It is *not* available for scheduled backups.