

Trimble Accubid Classic 15

SOFTWARE

This document provides basic information about new features, enhancements, and modifications in **version 15 of the Trimble® Accubid® Classic software**. More detailed information can be found in the online help system. These Release Notes cover the following topics:

- ▶ **Introduction**
- ▶ **New Features, Enhancements, and Modifications**
- ▶ **Essential release information**
- ▶ **Update installation instructions**
- ▶ **Product assistance**
- ▶ **Legal Notices**

Introduction

These Release Notes describe the new features and modifications that are in version 15 of the Trimble® Accubid® Classic software. For additional support information, go to <http://mep.trimble.com/support>

Upgrade Procedure

Please refer to the [Update Installation Instructions](#) at the end of this document for information on requirements to install this update. Trimble recommends that you print these instructions to help ensure proper operation of the software application after installation.

Version: 15
Revision: A
Date: November 2018

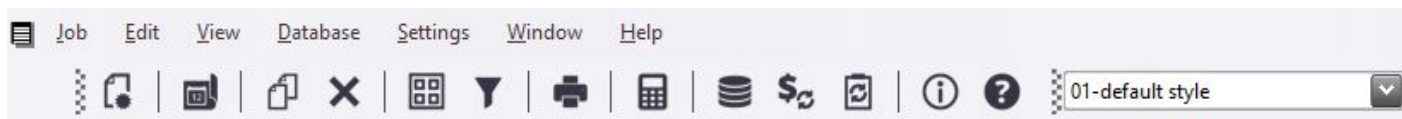
New Features, Enhancements, and Modifications

General Feature Enhancements and Bug Fixes

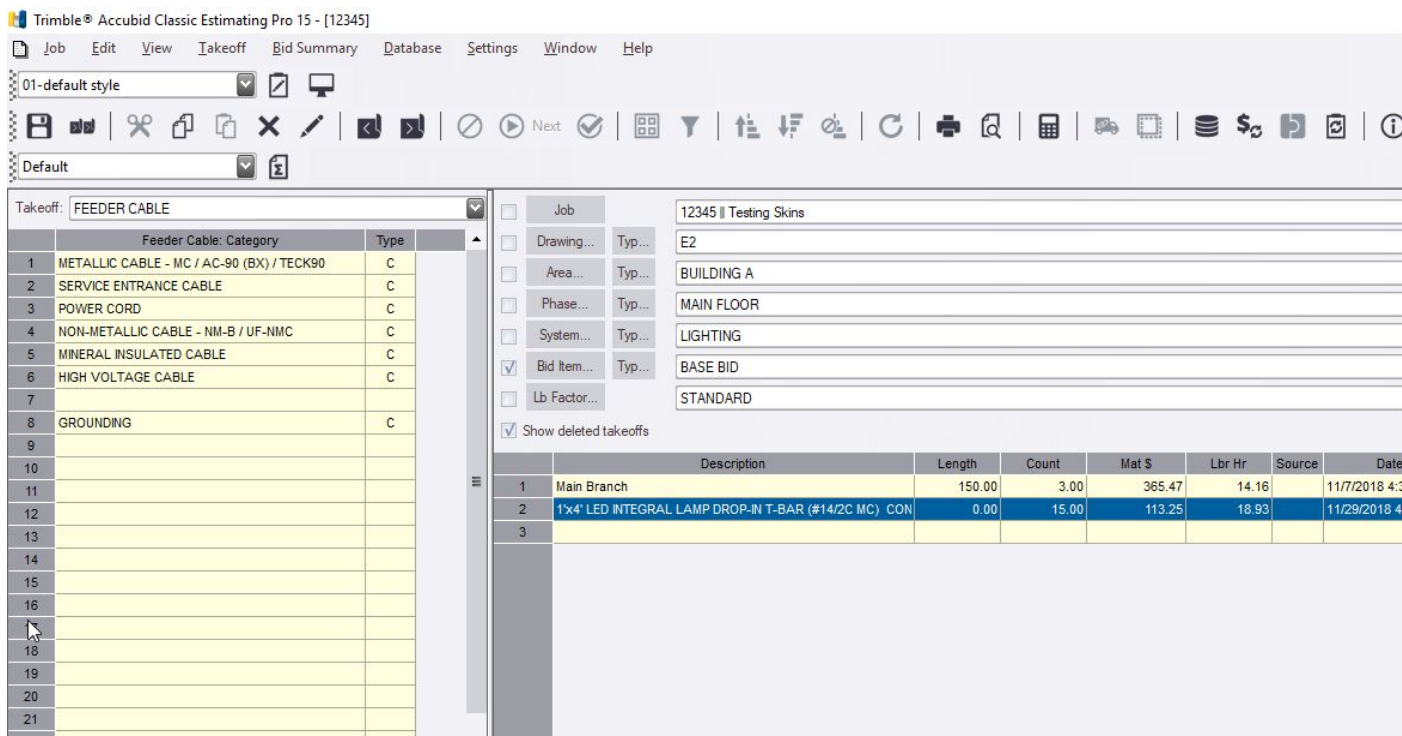
We appreciate the feedback and are continuously improving and evolving the product to meet the needs of our customers. Various smaller improvements to features and functions that have been requested from the field have been made with this version that will further improve the user experience and customer satisfaction.

New Trimble Theme & Icons

In an effort to keep our products looking and feeling current, we are excited to announce that with this release we have refreshed the look and feel of Trimble Accubid Classic. This includes new toolbar icons:



And a new Trimble Theme:

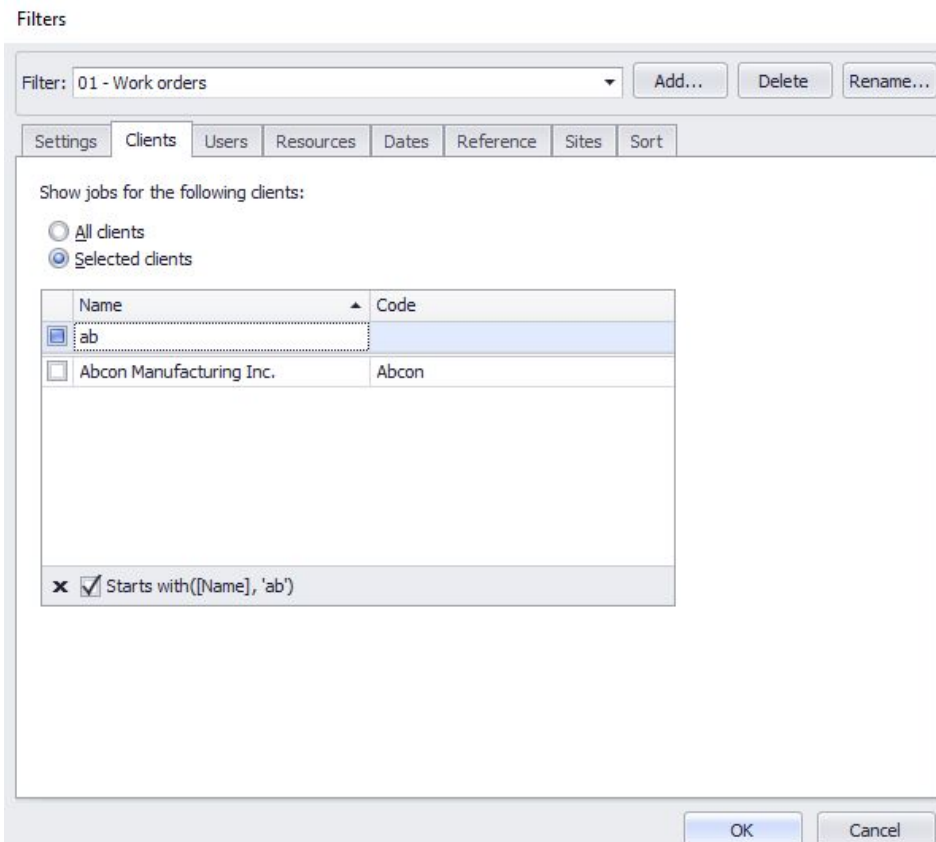


Accubid Classic - Estimating

- Deeper integration to Trimble LiveCount which includes;
 - The ability to link sub-takeoffs to LiveCount
 - Ability to update count and length from LiveCount for sub-takeoffs
 - Accurate designation counts
- Ability to have a zero quantity in an assembly when performing takeoff with LiveCount.
- Addressed the problem where editing the font case for job name or job number was not saving changes
- We have increased the max total value of all jobs in the job schedule screen
- Updated the order of jobs in the job merge window, jobs are now sorted by job number and will be in the same order as they appear in the job schedule screen. This allows you to easily locate the jobs you are looking to merge.
- A Major fix was made to prevent job corruption issues
- Addressed inconsistent behaviour related to the short cut key Ctrl + A to add an additional item in Extension.
- Fixed some issues with Supplier Link
- Other small fixes and workflow issues

Time & Material Billing Module

- We have increased the max total value of all jobs in the job schedule screen
- New Feature to enable filtering in the schedule screen which includes filtering by user, client and resources.



- Fixed an issue related to a job rescan where the tax region for a new client was being set as the global tax region instead of the tax region defined for the job

Essential Release Information

Compatibility

Operating Systems

This version of the Trimble Accubid Classic software is compatible with Microsoft Windows® 10 and Windows 7 (32-bit and 64-bit)

Note – *Windows 7 Home Edition, Windows 8.x, or Windows 10 S are not supported.*

For a complete listing of System Requirements please view the [Technical Specifications](#) document.

Trimble Accubid LiveCount Desktop

This release of the Classic software is compatible with the Trimble Accubid LiveCount® Desktop software, release 5.3 or higher.

Microsoft SQL 2014 Express

This installation routine in this release of Accubid Classic version 15 software installs Microsoft SQL 2014 Express. You will be unable to attach the database packaged with this version of the software to a lower version of SQL. Migrating the database from an earlier version of SQL will continue to work; for example, if you have SQL 2008 and migrate to the current Accubid Classic T&M Billing version 15 software.

Compatible “Update From” Versions

The Trimble Accubid Classic software can be updated directly from the any release of the following:

- Version 13.x
- Version 14.x

If the currently installed version is not in the list above, please contact Trimble MEP Client Services. A full listing of contact information can be found in the [Trimble MEP Client Services](#) section below.

Update installation instructions

- This instructions below assume you have already downloaded the installation files from the Trimble Client Portal.
- You must have a previous version of the Classic software on the computer where you are installing this update.
- All users must be logged out of the Classic Estimating software before installing this update.

Trimble recommends that you install this update during a non-busy time or after hours to minimize disruptions in your company's workflow.

Accubid Estimating/Change Order and Time & Material Billing Installation Procedures

1. Locate the downloaded installation file. Double-click on it. The installation routine prepares the files.
2. In the **Trimble welcome** screen, click Trimble® Accubid Classic.
3. In the **Welcome to the InstallShield Wizard for Trimble Accubid Classic v15** screen, click **Next**.
4. Review the information in the License Screen. Click **I Accept the terms of the license agreement**.
 - 4.1. You must accept the terms of the license agreement to continue the installation.
 - 4.2. If you wish to obtain a hard copy of the agreement, click **Print**. Click **Next**.
5. In the **Custom Setup** screen, select the applications you want to install. Click the **Help** button for more information on selecting options. Click **Next**.
6. Select the proper option buttons in the **Install Material Database/Default Jobs** screen.
 - 6.1. Country
 - 6.2. Measurement

Tip – If you do not want to install a new material database, clear the checkbox .

7. Click **Next**.
8. In the second **Install Material Database/Default Jobs** screen, review the conversion options available. All checkboxes are selected. Trimble recommends that you convert all jobs to the latest version. If you do not want to convert, clear the appropriate checkboxes .
9. Click **Next**.
10. In the **Ready to Install the Program** screen, click **Install**.
11. Click **Finish** when complete.
12. Depending on your conversion selections the appropriate dialogs open.

If you are installing Time & Material Billing, you must also install the Time & Material SQL database. Refer to [Time & Material Billing Database](#) below for detailed instructions.

Tip – You will be presented with a dialog for each option you chose to convert.

Accubid Estimating Conversion Dialog

1. Select the appropriate folders containing jobs from previous versions. If the **Select Folders** pane does not contain any information, click **Add** and you can enter the folder path or browse to the folder.
2. In the **Convert from which version** field, select the job version you are upgrading from. Click **OK**.
3. In the **Convert Old Job Files** dialog:
 - 3.1. Select the checkboxes next to each job you want to convert. If you do not want to convert specific jobs, clear the checkbox.
 - 3.2. Click **Convert**. When the conversion is complete, click **OK** in the confirmation message.

Accubid Change Order Conversion Dialog

1. Select the appropriate folders containing jobs from previous versions. If the **Select Folders** pane does not contain any information, click **Add** and you can enter the folder path or browse to the folder.
2. In the **Convert from which version** field, select the job version you are upgrading from. Click **OK**.
3. In the **Change Order File Converter** dialog:
4. Select the checkboxes next to the jobs/files you want to convert. If you do not want to convert specific jobs/files, clear the appropriate checkbox.
5. Click **Convert**. When the conversion is complete, click **OK** in the confirmation message.
6. **Do not** close the Trimble Accubid Classic welcome screen if you have other compatible software that requires installation. Refer to the [Additional Software Installation](#) section for more information.

Additional Software Installation

Depending on the software you currently have installed and/or are licensed to use, you may need to install additional software/databases to complete the update process.

Time & Material Billing Database

If you are a new user to Time & Material Billing software, you must install a company database.

Tip – The instructions provided in this section assume you are using SQL Authentication for the Time & Material Billing database.

1. In the **Trimble Accubid Classic** welcome screen, click **Trimble® Time & Material Billing SQL Database**.
2. In the **SQL Install** dialog, the *Use existing SQL Server instance* is selected by default for update customers. Click ▼ to select the SQL Instance you want to use.
3. Enter the **Login** and **Password** for the SQL instance already installed. If you do not have this information available, contact your IT professional for assistance.
4. In the **Authentication Type for database** field, SQL Authentication is already selected.
5. Click **Install**. A confirmation message displays when complete.

LiveCount Desktop 5.3 Software

1. In the Trimble Accubid Classic welcome screen, click **Trimble LiveCount Desktop**.
2. Follow the on-screen prompts to install the update.
3. When complete, click **Finish**.

Trimble Integrator

To take full advantage of the features available in the Trimble Integrator, Trimble recommends you install the update included in this release.

1. In the **Trimble Accubid Classic** welcome screen, click **Trimble Integrator**. The Welcome to the InstallShield Wizard for Trimble Integrator screen displays. Review the information on-screen and then click **Next**.
2. Review the information in the **License Agreement** screen. Click **I Accept the terms of the license agreement**.
 - a. You must accept the terms of the license agreement to continue the installation.
 - b. If you wish to obtain a hard copy of the agreement, click **Print**. Click **Next**.
3. In the **Destination Folder** screen, click **Next**. Trimble recommends you install the Integrator software in the default location.
4. In the **Ready to Install the Program** screen, click **Install**.
5. When complete, click **Finish**.

Complete Installation Procedures

In the Trimble Accubid Classic welcome screen, click **Exit**.

Provided you followed all instructions in this document, you are now ready to use this release of the software applications.

Final Steps

1. Open the software using the method you normally do.
2. The online help system contains step-by-step instructions on using many of the features included in this release.



Product Assistance

Trimble offers several avenues to obtain help using the Trimble Accubid Classic software program.

Accessing the Online Help

The online help is easy to use and is accessible through any of the following methods:

1. Press the [F1] key at any time while using the program to display help for the current screen or dialog.
2. Click the Help menu and then select the appropriate option from the menu. You can scan the Table of Contents, use the Index, or the Search function to find the information you are looking for.

Tip – You can also click  or  on the toolbar to open the online help system.

- Use the Index tab to locate key words throughout the help system.
- Use the Search tab to find specific words used in the help system; for example, you might search for the word delete for instructions on deleting certain data from your system.

Trimble MEP Client Services

Before calling Client Services, we suggest you consult the online help. Many of the common procedures and questions are covered in this system.

Trimble MEP Client Services is available during regular business hours Monday through Friday.

Note – The office is closed on major holidays.

North America

Toll-free Telephone 1-800-361-3030

Outside North America

Telephone 1-905-761-8800

Email mepsupport@trimble.com

Support Website mepsupport.trimble.com

Trimble MEP Website mep.trimble.com

Third-Party Software Support

Trimble software may be integrated with third-party software applications (for example, accounting programs). Trimble MEP Client Services cannot provide in-depth support for third-party applications. Assistance is available only for procedures pertaining to how our software interfaces with non-Trimble applications.

Legal Notices

Trimble Inc.
116 Inverness Drive East, Suite 210
Englewood, Colorado 80112
800-234-3758

Trimble Canada Ltd.
9131 Keele Street
Suite A7
Vaughan, Ontario L4K 0G7
Canada

Copyright and Trademarks

©1999-2018 Trimble Inc. All rights reserved. Trimble, the Globe & Triangle logo, Trimble® Accubid Classic, and LiveCount are trademarks of Trimble Inc., registered in the United States and in other countries. Microsoft, SQL Server, and Windows are either registered trademarks or trademarks of Microsoft Corporation in the United States and/or other countries. Other brand and product names are trademarks or registered trademarks of their respective holders.

This publication, or parts thereof, may not be reproduced in any form, by any method, for any purpose, without the written consent of Trimble Inc.

Release Notice

This is the Trimble® Accubid Classic Software Release Notes (Revision A). It pertains to the Classic 15 release of the Software.

The topics within this manual:

- Are subject to change without written notice.
- Companies, names, and data used in any examples are fictitious.
- Screenshots included in the help topics may not be exactly as in the software application.

Edition

This is the Trimble® Accubid Classic software Release Notes (Revision A); Release 15