

QuickPen
DuctDesigner 3D

AutoCAD® 2013
AutoCAD® Architecture 2013
AutoCAD® MEP 2013

Release
Notes



©1998-2012 Trimble Navigation Limited. All rights reserved.

QuickPen is a trademark of Trimble Navigation Limited registered in the United States and/or in other countries. DuctDesigner 3D® is a registered trademark of Trimble Navigation Limited. All other trademarks are the property of their respective owners.

Published by: Trimble Navigation Limited
QuickPen Division
384 Inverness Parkway, Suite 200
Englewood, Colorado 80112
(800) 234-3758

Edition: DuctDesigner 3D® Release Notes, 2013 v2
October 22, 2012
Part # DD3D8063.08.1012_Release Notes_2013.2

This publication, or parts thereof, may not be reproduced in any form, by any method, for any purpose, without the written consent of Trimble Navigation Limited.

DuctDesigner 3D[®]

2013 v2 Release Notes

What You Receive With Release 2013 v2

- One DuctDesigner 3D Installation DVD
- *Let's Get Started* document

Note: DuctDesigner 3D, release 2013 v2, is compatible only with the following Autodesk 2013 product series: AutoCAD[®] 2013, AutoCAD[®] Architecture 2013, and AutoCAD[®] MEP 2013. It will not work with previous versions of these applications.

DuctDesigner 3D

Online Documentation/Services

Note: The Adobe® Reader® application must be installed on your system to view certain documents on-screen. If this software is not already installed on your computer, it is available on the DuctDesigner 3D installation DVD.

Documentation pertaining to this release of the DuctDesigner 3D software is available online as follows:

➤ **Before Installation:**

From the DuctDesigner 3D installation DVD:

- *Release Notes*
- *Update Installation Instructions*
- *ReadMe*

Note: If you are reading this document online, QuickPen strongly recommends that you print the above documents and review them thoroughly prior to installing this update.

➤ **After Installation:**

- From the Windows Start menu
- **CAD: DD3D™ Tools** and then click **Help**
- **Data Editor**: Press **F1** in any window/dialog

Update

Installation Information

Instructions for proper installation of this update are outlined in a separate document included on the DuctDesigner 3D installation DVD. QuickPen highly recommends that you print, review, and follow the instructions closely to help ensure that the software application functions properly after installation.

Important Installation Information

- If the current version you have installed is release *2011 v2 or later*, you can proceed with the installation. No additional steps are required.
- If you are installing from release *2011 v1 or earlier*, please contact QuickPen Technical Support before proceeding.
- If you are installing the DuctDesigner 3D 2013 v2 software on a computer that does not currently have the DuctDesigner 3D application installed, you must install the application as a new user.

Refer to the *Update Installation Instructions* on the installation DVD for detailed instructions.

DuctDesigner 3D® Viewer

QuickPen provides a viewer that allows those with a compatible Autodesk application(s) to view drawings created using the DuctDesigner 3D application.

This program installation is included on the DuctDesigner 3D installation DVD. Go to the **DuctDesigner 3D Viewer** option on the main installation screen. Detailed installation instructions are included on the installation DVD in the **Manuals** folder.

This program is also available for download from the QuickPen website www.quickpen.com. Go to *Technical Support > DuctDesigner 3D > DD3D™ Viewers*.

DuctDesigner 3D

2013 v2 Highlights

The DuctDesigner 3D system improvements offer customers the following new features and enhancements.

Compatibility

➤ Autodesk®

This release of the DuctDesigner 3D software is compatible *only* with the following Autodesk 2013 product series:

- AutoCAD® 2013
- AutoCAD® Architecture 2013
- AutoCAD® MEP 2013

It will not work with previous versions of these applications.

➤ Operating Systems

Refer to the System Specifications document on our website at www.quickpen.com for detailed information on supported operating systems. This document is located under *Products > CAD Software > DuctDesigner 3D > System Specifications*.

➤ Trimble® MEP Integration

With the Trimble MEP layout solution, mechanical, electrical, and plumbing contractors can increase productivity and simplify the layout of sleeves and hangers.

➤ Trimble® Field Link for MEP

The Trimble Field Link for MEP solution allows you to easily manage layout tasks by employing a task-based workflow featuring advanced layout, reporting, and model viewer functionalities.

➤ Vulcan

For download customers, you must have the most recent version of Vulcan to gain full advantage of the enhancements included in this version of DuctDesigner 3D.

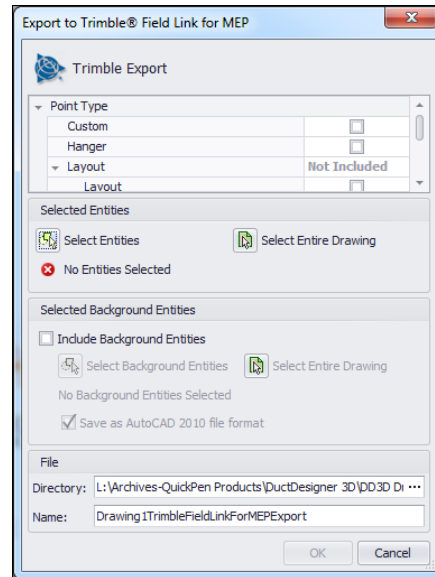
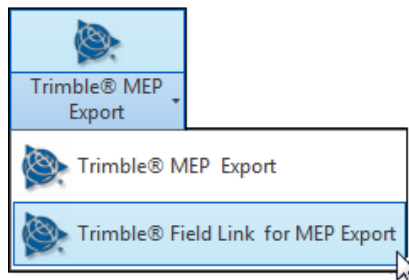
Field Points

The following enhancements have been made to Field Point functionality in this release of the DuctDesigner 3D software.

➤ Trimble Field Link for MEP

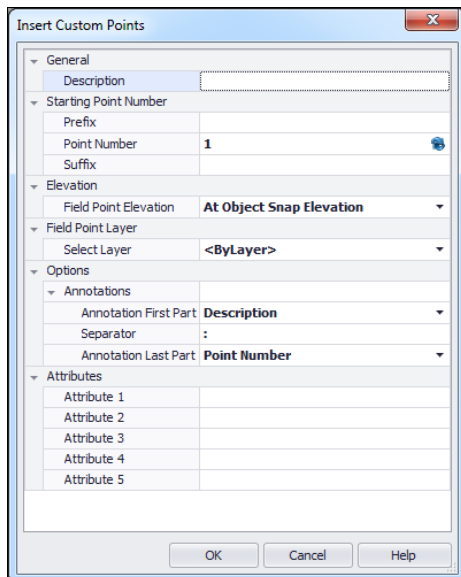
This release of the DuctDesigner 3D software includes an export to Trimble Field Link for MEP allows you to easily manage layout tasks. It employs task-based workflow, featuring advanced Layout, Reporting, and Model Viewer functionalities. Trimble Field Link for MEP provides access to the latest tools for increasing productivity and accuracy during the construction layout process.

Go to *DD3D™ Tools > Field Points* to access this functionality.



➤ Custom Points

The Custom Points module has been enhanced to include a window that allows you to set specific options.



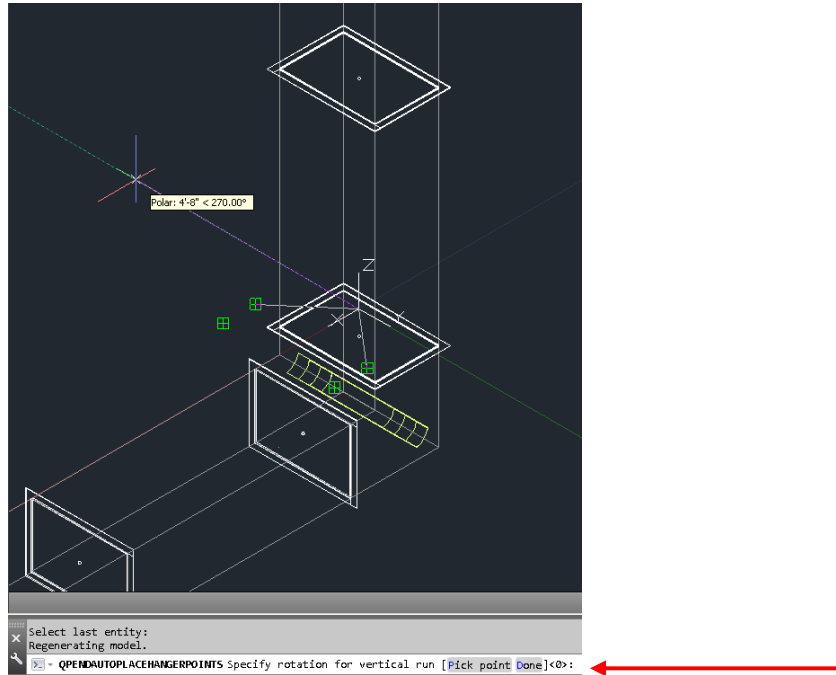
Options include defining point numbers, annotations, attributes, and so on.

➤ Hanger Points

The following enhancements have been added to the DuctDesigner 3D software in this release:

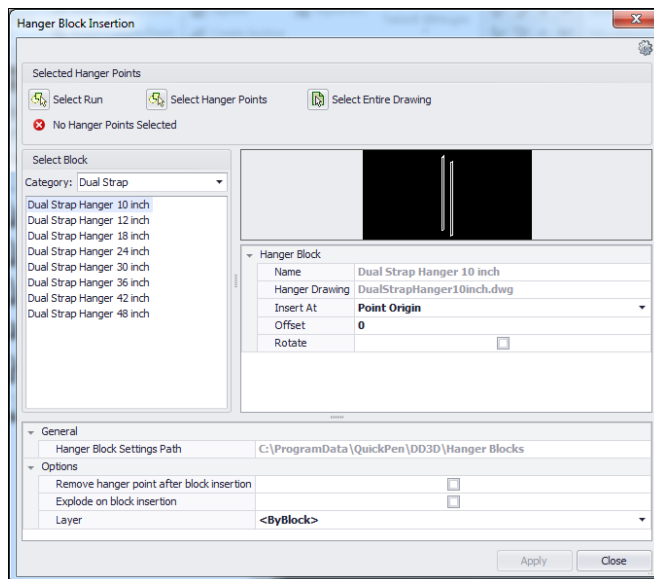
■ Vertical Runs

Release 2013 v2 includes functionality that allows you to insert hanger points into vertical runs. This is a Command Line option when you are placing Hanger Points.



■ Hanger Blocks

You can now insert hanger blocks into Hanger Point Positions. Go to *Field Points > Insert Hanger Blocks*.

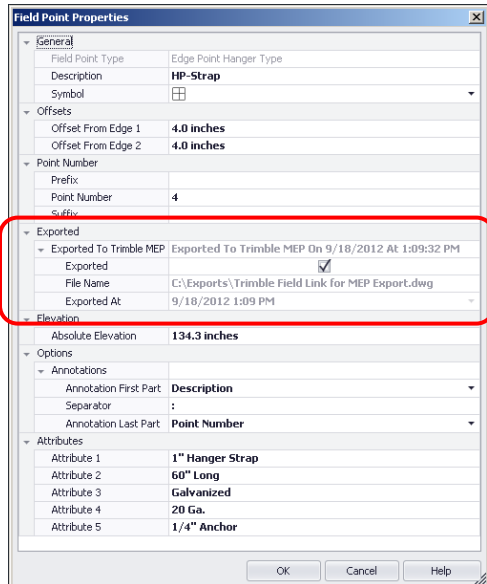


This feature allows you to add hanger blocks to specific hanger points in your drawing. These blocks are included in your field point export. **Note:** The DuctDesigner 3D

block library includes several default hanger blocks that you can insert into your drawing. You can also easily create new hanger blocks that will also be available for selection in the Hanger Block Insertion window.

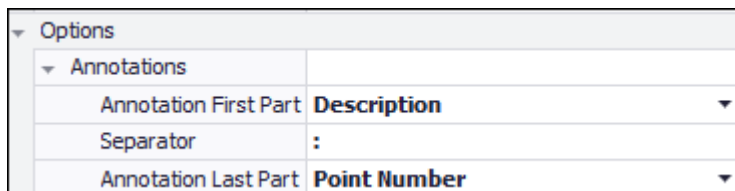
➤ Field Point Properties

The Field Point Properties window now displays the exported state, the date exported, and the name of the export file.



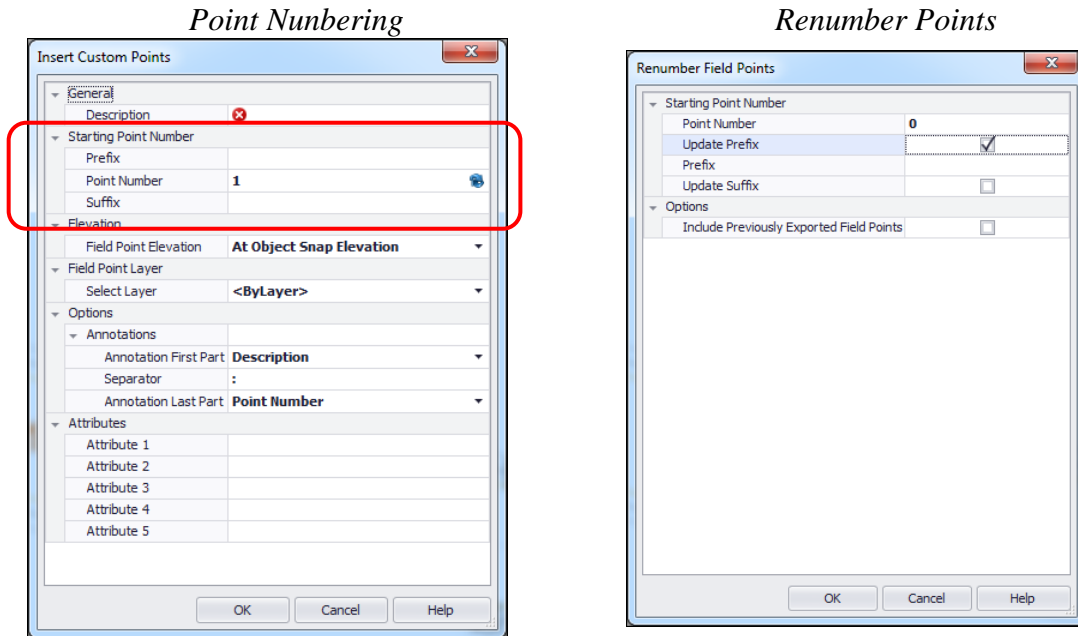
➤ Field Point Annotations

All Field Points (Hanger, Objects, and Custom) now include annotations. When applied, these display within the points.



➤ Point Numbering/Renumbering

You now have the ability to number points and define prefixes/suffixes for the points as you place them. The graphic below illustrates this option in the *Insert Custom Points* dialog. Other insert point dialogs have similar numbering options.



Renumber Points

After you have set the renumbering parameters, you can then click the points you want to renumber/modify in your drawing. As you click each point, it will be renumbered incrementally based on your input in the Point Number field. Additionally, any prefix/suffix will be updated according to what you input in these fields. **Note:** If the update checkboxes are not selected, no action is taken.

Export Features

➤ Tekla® BIMSight/Tekla® Structures Export

This release includes exports to Tekla BIMSight and Tekla Structures. This command is located under *DD3D™ Tools > Tools*.



- **Tekla® Structures**
The Tekla® Structures export can be used to share your model with other Building Information Modeling applications without the need for using a viewer. This export format includes all PipeDesigner 3D properties in the export.
- **Tekla® BIMSight**
The Tekla® BIMSight export creates an export file that can be imported into the Tekla® BIMSight software. This software application allows you to combine, view, and check building information.

➤ Trimble® Field Fitting Input Verification

The DuctDesigner 3D, release 2013 v2 software includes an option that allows you to flag specific fittings for the Trimble Field Fitting software application. These flags are exported to the Vulcan software.

This command is located under *DD3D™ Entities > Flags > Field Verify*. When you execute this command, you can select the objects in your drawing you want the flag applied to.

For more information on Trimble Field Fitting Input, contact your Trimble sales representative at 1-800-441-2840.

Note: Although the verify command is included in this release of the DuctDesigner 3D software, the Vulcan software functionality will be available in the next release of that software (Vulcan 2013 v2). Look for an update to your Vulcan software release before the end of this year.

Miscellaneous

➤ Default Angle

The DuctDesigner 3D software allows you to specify an angle (other than 90°) for each type of elbow in fitting defaults (DuctDesigner 3D Data Editor > *Standards* > *Duct and Fitting Standards – Rect.*

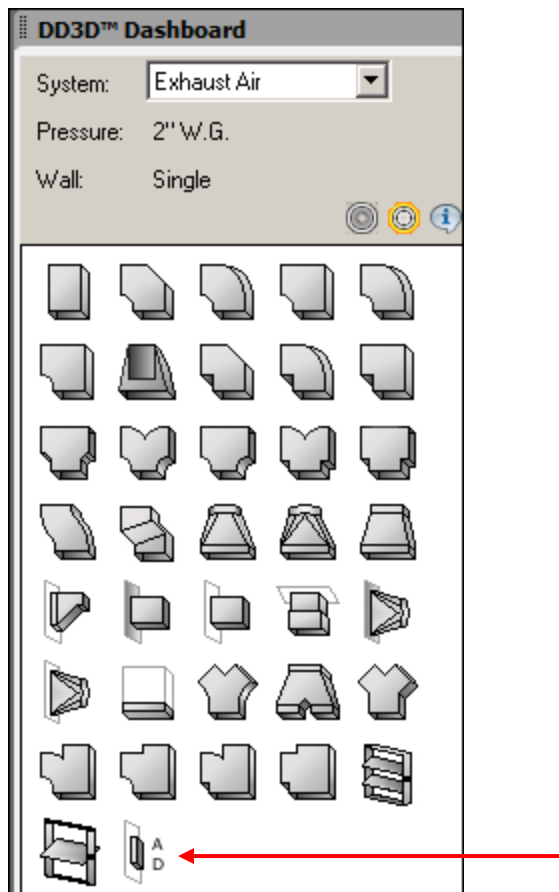
The angle can be defaulted for the following rectangular elbows in the data editor:

- Radius Throat/Radius Heel Rectangular Elbow
- Radius Throat/Square Heel Rectangular Elbow
- Square Throat/Angle Heel Rectangular Elbow
- Square Throat/Radius Heel Rectangular Elbow
- Square Throat/Square Heel Rectangular Elbow

Note: When you select the fitting from the DD3D™ Palette, the default angle can be changed on the Properties tab.

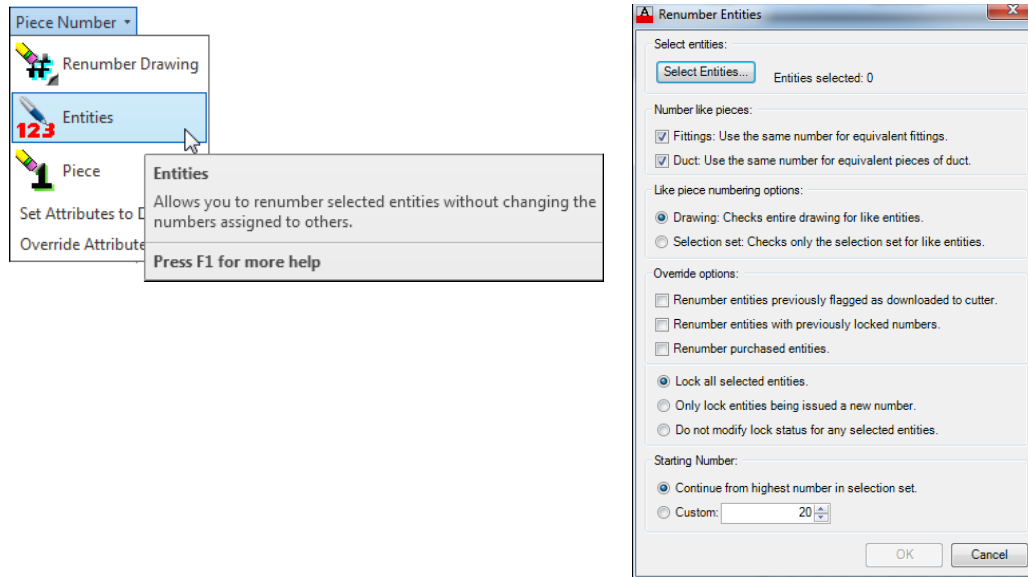
➤ Access Door

A new rectangular access door fitting is now available for selection on the *DD3D™ Dashboard*.



➤ Renumber Drawing

You can now renumber specific in a run by selecting the starting and ending entity. For example, you may want to select only the duct in the main run for renumbering, but not include branches. This path to this command is *DD3D™ Entities > Attributes > Entities*.



➤ Fitting/Note Association

Release 2013 v2 allows you to associate notes with each fitting. This note can also be annotated and exported to Vulcan. This feature is available under *DD3D™ Entities > Notes*.

➤ Download Information

This release of the DuctDesigner 3D software provides valuable information pertaining to downloads performed. This information includes the download file name and date.

This data is available two different ways:

■ Fitting Properties

When you click on a fitting, you can go to the *Properties* tab in the *DD3D™ Dashboard* to view download information.

| | |
|---------------------------------------|---|
| <input type="checkbox"/> View Details | |
| Cutter - Burn Full Piece On Table | No |
| Downloaded - Cutter | Yes |
| Downloaded - Cutter Details | Duct Export.import, 17-09-2012 1:55:51 PM |
| Downloaded - Estimating | No |
| Downloaded - Estimating Details | |

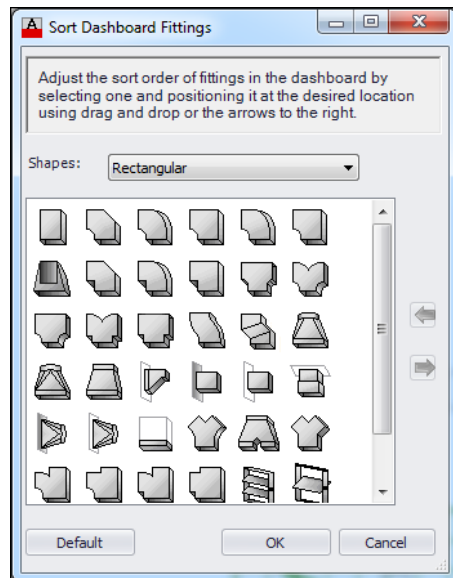
■ Reports

You can view this information in the reporting module. The reporting module allows you to view the download information for multiple fittings.

| Ductwork Rectangular | |
|---|---|
| Project: Company Standards Project | |
| Duct v2013.2 | |
| System: Supply Air - Material: Galvanized | |
| Rectangular Straight Duct | |
| Piece Number | 6 |
| Quantity | 2 |
| End 1 Conn. | Standing Slip x Drive Slip |
| End 2 Conn. | Standing Slip x Drive Slip |
| End 1 Size | 24.00 x 16.00 |
| Length | 59.00 |
| Downloaded - Cutter Details | Duct Export.import, 17-09-2012 1:55:51 PM |
| Note | |
| Seam | Pittsburgh - Large |
| Material - Thickness | 26 ga |
| Piece Number | 4 |
| Quantity | 2 |
| End 1 Conn. | Drive Slip x Standing Slip |
| End 2 Conn. | Drive Slip x Standing Slip |
| End 1 Size | 16.00 x 30.00 |
| Length | 59.00 |
| Downloaded - Cutter Details | Duct Export.import, 17-09-2012 1:55:51 PM |
| Note | |
| Seam | Pittsburgh - Large |
| Material - Thickness | 24 ga |

➤ Dashboard Sorting Options

You can now rearrange the layout of the *DD3D™ Dashboard*. This allows for easier selection of your more commonly used fittings.



This feature is available on the *DD3D™ Tools* under *Utilities > Miscellaneous > Sort Dashboard Fittings*.

➤ Annotations

Annotations are now included in the client export.