

# 2014 v2 RELEASE NOTES

## **Trimble® DuctDesigner 3D® Software**

- Introduction
- Compatibility
- New Features/Enhancements

Trimble Navigation Limited  
116 Inverness Drive East, Suite 210  
Englewood, Colorado 80112  
800-234-3758

## **Legal Notices**

### **Copyright and Trademarks**

©2004-2013 Trimble Navigation Limited. All rights reserved.

Trimble and the Globe & Triangle logo are trademarks of Trimble Navigation Limited, registered in the United States and in other countries. DuctDesigner 3D is a registered trademark of Trimble Navigation Limited. Other brand and product names are trademarks or registered trademarks of their respective holders.

This publication, or parts thereof, may not be reproduced in any form, by any method, for any purpose, without the written consent of Trimble Navigation Limited.

### **Release Notice**

This is the Trimble DuctDesigner 3D Release Notes (Revision A). It applies to release 2014 v2 of the software.

The topics within this document are subject to change without written notice. Companies, names, and data used in any examples are fictitious. Screenshots included in the topics may not be exactly as in the software application.

### **Edition**

Trimble® DuctDesigner 3D Release Notes  
Part # DD3D8059.08.1013\_Release Notes 2014 v2

Tuesday, November 05, 2013 8:32 am

---

## Introduction

This document provides basic information about new features and modifications in release 2014 v2 of the Trimble® DuctDesigner 3D® software. More detailed information can be found in the online help system.

### What You Receive With Release 2014 v2

- One Trimble DuctDesigner 3D Installation DVD
- One DuctDesigner 3D *Let's Get Started* foldout

### Upgrade Procedure

Please refer to the DuctDesigner 3D *Update Installation Instructions* document on the installation DVD for information on requirements to install this update. Trimble recommends that you print this document to help ensure proper operation of the software application after installation.

## Compatibility

### Autodesk® Software

This release of DuctDesigner 3D software is compatible with:

- AutoCAD® 2014
- AutoCAD® Architecture 2014
- AutoCAD® MEP 2014

It will not work with any other version of these applications.

### Operating Systems

This version of the DuctDesigner 3D software is compatible with 32-bit and 64-bit Windows® 7 and Windows 8 operating systems. Your version of AutoCAD must correspond with the proper version of the DuctDesigner 3D software, as well as the operating system.

### Trimble® Field Link for MEP

Trimble Field Link for MEP allows you to easily manage layout tasks by employing a task-based workflow featuring advanced Layout, Reporting, and Model Viewer functionality.

### Trimble® MEP Integration

With the Trimble MEP layout solution, mechanical, electrical, and plumbing contractors can increase productivity and simplify the layout of sleeves and hangers.

---

### **Trimble® AutoBid® SheetMetal Integration**

The DuctDesigner 3D software includes the ability to export data in a format that can easily be imported into the AutoBid SheetMetal database. Refer to the online help in each of the software applications for detailed instructions.

### **Vulcan Integration**

The Export to Vulcan feature allows selected duct and fittings within a drawing to be transferred directly from DuctDesigner 3D® to the Vulcan cutting software, eliminating the need for manual input of those items into the cutter program. This also greatly reduces the chance of input errors at the cutter.

---

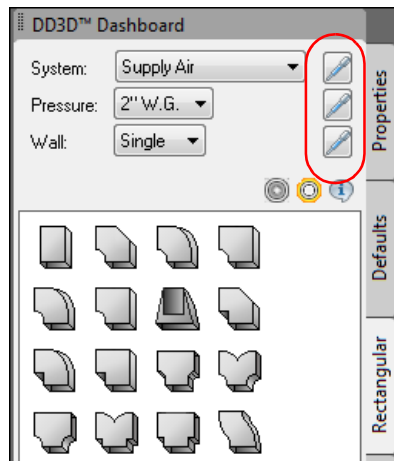
## New Features/Enhancements

The following enhancements have been added to the DuctDesigner 3D software in this release:

### DuctDesigner 3D CAD

#### Match Buttons

This release of the DuctDesigner 3D software includes functionality allowing you to match settings to a selected item. You can use this feature when attaching fittings or placing branches to ensure the appropriate system, pressure, and/or wall is used. The match buttons are located on the DD3D™ Dashboard next to each associated field.



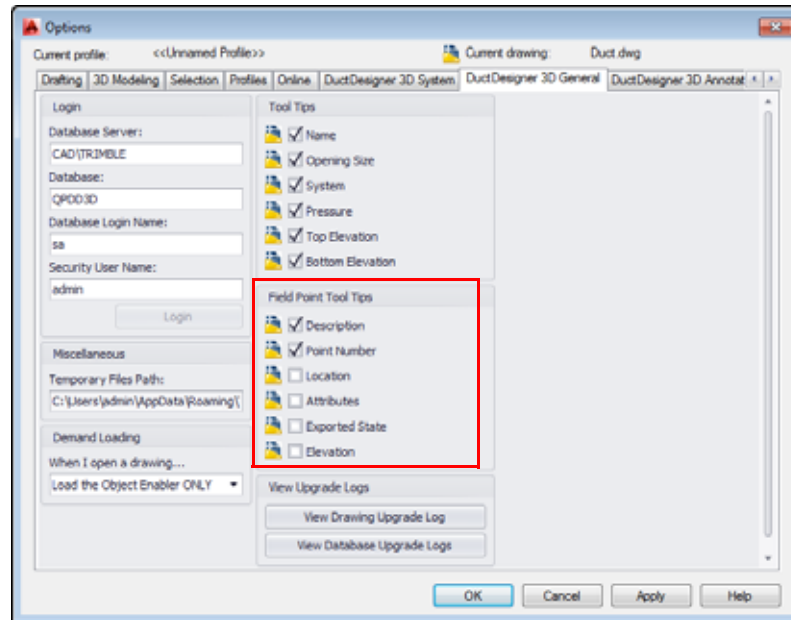
When you click on a match button, you are prompted at the Command Line to specify the object. You can click on the item in the drawing and all settings change based on your selection.

This feature will help eliminate placing items with incorrect settings.

#### Field Points

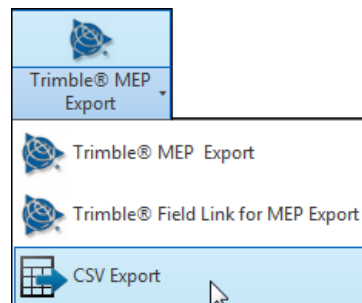
- **Custom Points**  
You can now insert Custom Points in a any view. This modification makes it easier to insert points at Sleeve openings in walls and for other similar situations. The points are oriented in plan view.

- **Field Point Tool Tip Options**  
You can now select tool tip options for field points under **Options / DuctDesigner 3D General**.



Tool Tips are activated by selecting the checkbox next to the items you want included. When Tool Tips are selected, simply hover your mouse over the field point to view the information.

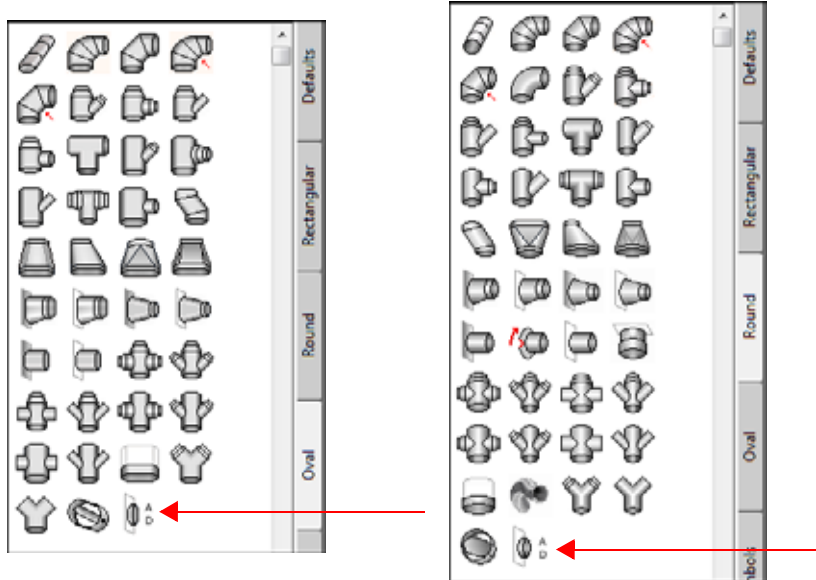
- **CSV Export**



This export allows you to create an export file that can be imported into various field points software programs. **Note:** While you can use this export option to create a file that can be imported into Trimble® MEP and Trimble® Field Link for MEP, this file does not include data specific to these field points programs. If you are going to import data into a Trimble program, we recommend you use the Trimble® MEP or Trimble® Field Link for MEP export procedures. These processes export and import data specific to the Trimble field points programs.

## Access Doors

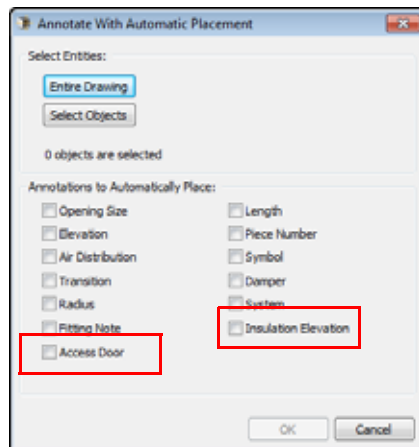
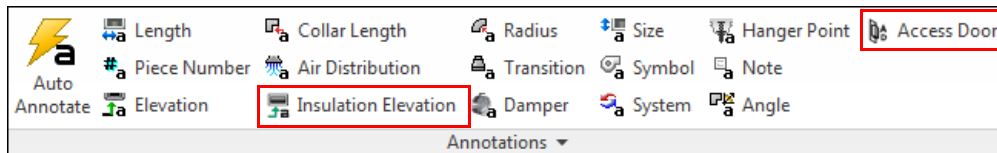
Round and Oval access doors have been added to fittings. You can now select the access door from the fitting list and place it in your drawing.



**Note** – Access Doors now have a specific Automatic Layer setting in the DuctDesigner 3D Data Editor. This allows for easier system identification.

## Annotations

- New Annotations



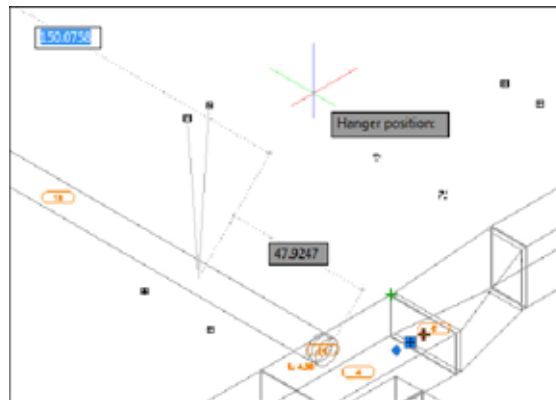
---

New annotation options have been added to DuctDesigner 3D in release 2014 v2. These include:

- Insulation Elevation (bottom and top of insulation)
- Access Doors
- **Import Annotation Settings**  
This release of DuctDesigner 3D includes functionality that allows you to import annotation settings from another drawing. This command is located on **DD3D™ Entities / Annotations** panel. When you click ▼ on the panel and then **Import**, you can select the drawing with the settings you want to import into your current drawing.

## Hangers

- **Plus and Move Grips Dimensions**  
When using the Plus and Move Grips on Hanger Points, you can now specify a point or location dynamically.



To use this feature, the AutoCAD Dynamic Input option  must be active.

- **New Hanger Type: EZ Hanger™**  
This setting places hanger points based on how you define the type. Options are:
  - A hanger point on every connector in a run
  - Every other connection in a run
- **New Hanger Point Rule**  
This rule works in conjunction with the new EZ Hanger type.
- **New Hanger Blocks**  
Additional hanger blocks are now available that work with the EZ Hanger type.



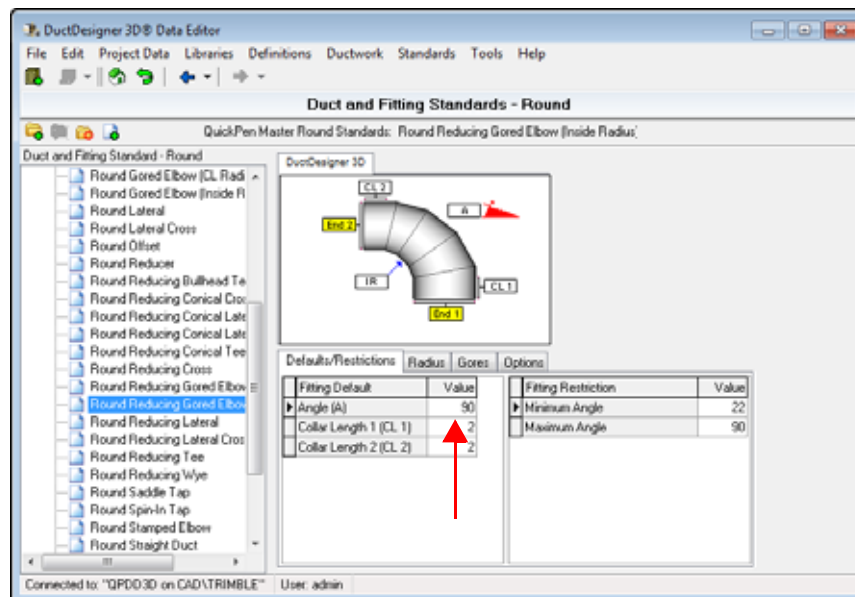
## Additional CAD Modifications

- **Fill: Offset Fittings**  
This release of the DuctDesigner 3D software provides more consistent fill between duct and fittings. When you select a transition or offset for placement, a duct fill command displays at the Command Line, allowing you to select the duct fill settings immediately.
- **Round Boot Taps**  
You can now connect round boot taps to rectangular duct.
- **IFC Export**  
The IFC Export procedure has been modified to work more efficiently with NavisWorks®, allowing for better 3D oval duct appearance. If you will be opening the export file in NavisWorks, Trimble recommends that you use this export procedure exclusively.
- **DuctDesigner 3D Objects**  
When in the AutoCAD MEP Object Viewer, zooming out now works as expected on DuctDesigner 3D objects.

## DuctDesigner 3D Data Editor

### Round/Oval Elbows

You can now set a default angle for a round or oval elbow in the DuctDesigner 3D Data Editor under **Standards / Duct and Fitting Standards** and **Round/Duct and Fitting Standards - Oval**. The graphic below illustrates a Duct and Fitting Standards - Round window. The window for oval is similar.



---

This feature allows you to define default angles used most often used by your company, which will make placement in your drawing faster. If necessary, you can change this setting when placing the elbow in the drawing.