

6.8 RELEASE NOTES

Trimble® Accubid Enterprise Software

- Introduction
- New Features/Modifications
- Update Installation Instructions
- Product Assistance

Toronto Office

Trimble Canada Ltd.
9131 Keele Street
Suite A7
Vaughan, Ontario L4K 0G7
Canada

Copyright and Trademarks

©2005-2015 Trimble Navigation Limited. All rights reserved.

Trimble and the Globe & Triangle logo are trademarks of Trimble Navigation Limited, registered in the United States and in other countries. Accubid is a trademark of Trimble Navigation Limited, registered in the United States and/or in other countries. All other trademarks are the property of their respective owners.

Trimble® Accubid Enterprise, Change Management, and LiveCount are trademarks of Trimble Navigation Limited. Other brand and product names are trademarks or registered trademarks of their respective holders.

This publication, or parts thereof, may not be reproduced in any form, by any method, for any purpose, without the written consent of Trimble Navigation Limited.

Release Notice

The topics within this document are:

- Subject to change without written notice.
- Companies, names, and data used in any examples are fictitious.
- Screenshots included in the help topics may not be exactly as in the software application

Edition

This is the Trimble® Accubid Enterprise software Release Notes (Revision A_ENG); Release 6.8.

Part Number Enterprise.9050.08.1115_Release Notes
Wednesday, December 09, 2015 11:06 am

Introduction

This document provides basic information about new features, enhancements, and modifications in release **6.8** of the **Trimble® Accubid Enterprise** software. More detailed information can be found in the online help system.

What You Receive with this Release

- New/Modified features outlined in this document
- Updated online help
- Electronic documentation available on the installation media and the Trimble Client Portal

Upgrade Procedure

Please refer to the Enterprise [Update Installation Instructions](#) at the end of this document for information on requirements to install this update. Trimble recommends that you print these instructions to help ensure proper operation of the software application after installation.

Note – *In the installation routine, selecting the Update database option installs only program modifications and enhancements. Your existing tables, specifications, and estimates are not impacted in any way.*

Compatibility

Operating Systems

This version of the Enterprise software is compatible with 32-bit and 64-bit Windows® 7, Windows 8, and Windows® 10 operating systems. For a more complete listing of technical specifications, please go to our website at mep.trimble.com to review the technical specifications for the Enterprise software (*Products / Trimble Accubid Enterprise Estimating / Technical Specifications*).

Trimble® LiveCount™ Compatibility

This release of the Enterprise software is compatible with the **Trimble LiveCount** software, **version 5.0** (as well as version 4.1). Refer to the mep.trimble.com website for a full list of compatible versions.

Trimble® PipeDesigner 3D® Integration

The Enterprise software includes the ability to import drawing data from a Trimble PipeDesigner 3D drawing. Refer to the online help in each of the software applications for detailed instructions.

Trimble Connect

Trimble Connect provides a method for designers, builders, owners and operators to collaborate, share and view project information. For more information go to connect.trimble.com.

Hard Dollar Integration

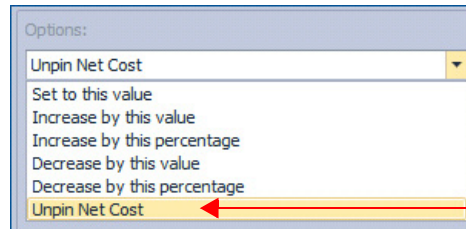
The Enterprise software includes a seamless integration with the Hard Dollar software. This is accomplished through a web service; nothing is required within the Enterprise software. Data is automatically passed to the Hard Dollar database.

New Features/Modifications

This document lists new features and modifications in the Trimble Accubid Enterprise application.

Enterprise Manager

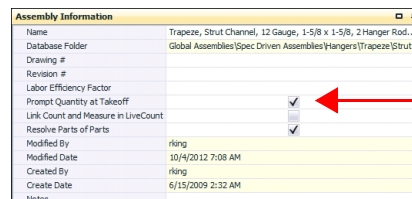
- **Power Search & Update**
The Power Search & Update function now includes the ability to update a cost field or remove any pinned values.



- **Labor Column Labels**
You can now use the character & in a labor column label. Previously, using this character may have caused issues viewing labor units on the Estimating side.
- **Assemblies**
In the Assembly grid (under *Database Manager / Items & Assemblies*), the *Prompt Quantity at Takeoff* field is now read-only.

	Name	Drawing #	Revision #	Labor Efficiency...	Prompt Quantity at Takeoff
1	Trapeze Path-Strut				<input type="checkbox"/>
2	Trapeze, Strut Channel, 12 Gauge, 1-5/8 x 1-5/8, 2 Hanger Rods...				<input checked="" type="checkbox"/>
3	Trapeze, Strut Channel, 12 Gauge, 1-5/8 x 1-5/8, 2 Hanger Rods...				<input checked="" type="checkbox"/>

If you want to change this field, you must open the assembly and change the setting in the *Assembly Information* pane.



This helps prevent quantity errors when the takeoff is resolved.

- **Items / Discount Groups**
 - When items are assigned to Discount groups (*Database Manager / Items & Assemblies*), you can now right-click your mouse on the *Price* tab and access various commands on the pop-up menu.
 - When you add Discount Groups to your items using the *Fill Down* command (from the pop-up menu), the values now save (as expected).

Enterprise Estimating

Takeoff

- When you create a new drawing, copy a takeoff into the drawing, and then change values for the takeoff, the calculations now display properly.

Extension

- When an Extension is grouped and the Enterprise software is closed, occasionally upon reopening the application, column order for global layouts may have been out of order. This issue is resolved in this release.
- **Frozen Estimates**
When an estimate is frozen, no further changes are allowed. In conjunction with this feature, the *Re-Extend* button is now disabled when an estimate is frozen.

Closeout

- When you enter a value in the Closeout, the value becomes pinned. It will not revert to the global/default value once it is modified.
- **Final Pricing**
When the *Based on \$ per labor hour* option button is selected (Labor Calculations), values in all applicable fields update accordingly.
- **Incidental Labor**
You can now cost allocate two or more rows by selecting them, right-clicking and selecting *Allocate Cost* (even if one of your selections has already been cost allocated).


Item Update

NECA TRA-SER® PIK Codes* can now be updated through the Item Update module. This allows you to run a labor update through the TRA-SER LUM application.

Note – *This feature requires that you have a valid TRA-SER® Electrical subscription (Trade Service).*

**National Electrical Contractors Association | TRA-SER Permanent Identification Key Codes*

Additional Software Modifications


- **Print Grid/Print Screen**
 - **Print Expanded Details**
You now have the ability when printing a grid to expand details in the resulting report. To print expanded, select the *Expand Details* checkbox  in the dialog.

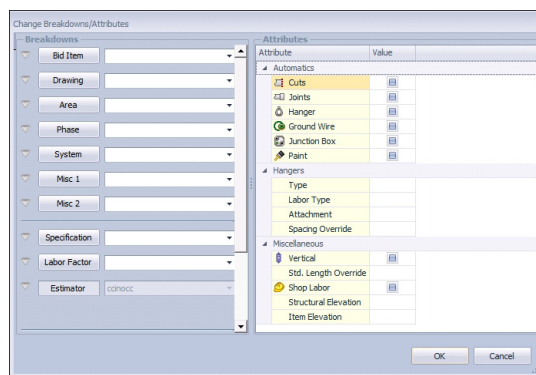
-
- **Hide trailing zeros**
When the *Hide trailing zeros* is selected (under *Settings / Options*), using the Print Screen/Print Grid option now handles this setting properly in the resulting report.
 - **Estimates**
When you open two estimates and then print both in sequence using the *Print Screens* command, the resulting report includes the proper information. Occasionally, the data included in the report displayed the incorrect estimate.
 - **Grid Views/Layouts**
From time-to-time, an Enterprise software update requires an update to the software grids and/or default layouts. When this is necessary, most grid/layout customization you created now remains static.
Note – *Please keep in mind that depending on the type of software update required, some customization may be lost.*
 - **Refresh Enhancements**
Information between the Enterprise Manager and Enterprise Estimating applications now passes as expected. This includes:
 - Designations**
Price and Labor changes made in the Enterprise Manager now update in an existing designation in the Estimating application when the estimate is re-extended.
 - **Processing Time**
Processing time has been improved in several areas, including:
 - Copying jobs that include many Designation folders
 - Opening Bid Breakdown with multiple groupings
 - **Web Service**
Estimator and Labor Factor values are now included in the Web Service export.
 - **Trimble® Integrator**
 - You can now export data to the Vista™ by Viewpoint software.
 - Modifications to accounting package selections are included in this release:
 - >PeachTree renamed to Sage 50
 - >Timberline renamed to Sage 300
 - >AccPac removed (now covered by Sage 300)**Note:** *We have renamed the PeachTree and Timberline selections to match the current software naming conventions.*
 - **Trimble Connect**
Direct access to Trimble Connect is now available within the Files and Links module. Trimble Connect offers the following:

- Bring your team's BIM data together in one shared space.
- Put the project's entire social and transactional history at your fingertips.
- Powerful cloud based technology gets you up and running quickly, with no IT staff or servers.

LiveCount™ Modifications

The following modifications relate to interaction with the Trimble Accubid Enterprise software *only*. For specific LiveCount enhancements, refer to the separate *Trimble® Accubid LiveCount Release Notes* document.

- When you want to change the assigned Takeoff Breakdown for several items while working in the LiveCount software:
 - Click the *Multiple-Select*  command on the toolbar, and then select the items in the drawing.
 - Right-click and select **Edit Work Breakdowns in Estimating** from the pop-up menu.
 - The Change Breakdowns/Attributes dialog in the Enterprise software opens. Change your breakdown and then click **OK**.



Essential Release Information

- **Microsoft SQL 2012**
This installation routine in this release of the Enterprise software installs Microsoft SQL 2012. You will be unable to attach the database *packaged* with this version of the software to a lower version of SQL. Migrating the database from an earlier version of SQL will continue to work; for example, if you have SQL 2008 and migrate to the current Enterprise.
- **Compatible Database “Update From” Versions**
The Enterprise software can be updated directly from the following database versions:

Version	Build
6.7	57052
6.6	56545
6.5	55763
6.4	55290
6.3.1	53862
6.3	53222
6.2	51571
6.1.1	49424
6.1.0	48306
6.0.1 Hot Fix 1	45001

If the currently installed database version is not in the list above, please contact MEP Client Services at 1-800-361-3030 for assistance prior to installing.

- Due to limitations in the Windows 7 operating, pinned icons/links may be lost during an upgrade of the Enterprise software. For more information and a resolution, please refer to the Microsoft article at this link:
<https://support.microsoft.com/en-us/kb/2461919>
- **LiveCount™ Procedures**
When you are working in the LiveCount software, you must send your work to the Enterprise Estimating application *before* resuming work on your estimate. Failure to do so results in loss of the work completed in the LiveCount software.
- The Bid Summary toolbar is now available for viewing only in the Proposed Change Order (PCO) window. The available options in the Bid Summary are Manage Bid Summaries and Re-Extend. You cannot create, rename, or delete Bid Summaries from the PCO / Bid Summary screen.

Note – *Only one Bid Breakdown is allowed in a PCO. Under certain circumstances, some customers were able to copy more than one Bid Breakdown in the Proposed Change Order (PCO) module. When this occurred, material was accounted for in the final price, but not displayed. The availability of the Bid Summary allows those customers to view, but not alter, these secondary breakdowns.*

- **Scalex Support**

The Enterprise software no longer supports the Scalex measuring tool. This is due to Scalex compatibility issues with the Windows 64-bit operating system.

- **Product Support**

If you have any questions regarding the Essential Release Information presented, please see the [Product Assistance](#) section for MEP Client Services contact information.


Update Installation Instructions

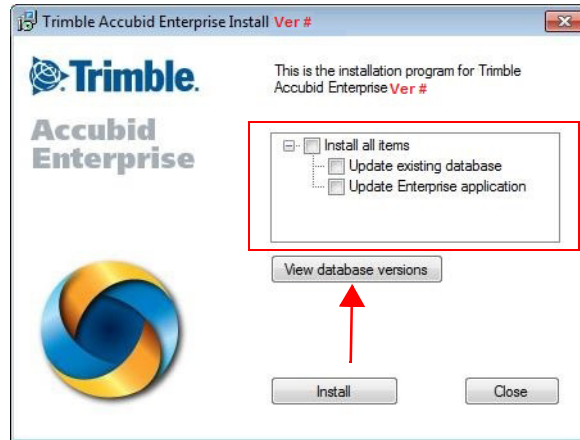
Installation Procedures

- The instructions below assume you have already downloaded the installation file(s) from the Trimble Client Portal.
- You must have a previous version of the Enterprise software on the computer where you are installing this update.
- Depending on the size of your database, this update may take a substantial amount of time to complete (approximately 40 minutes per database). Trimble recommends that you install this update during a non-busy time to avoid work slowdowns/stoppages.
 - If the Enterprise software is installed on a single computer, without a separate server, refer to [Update the Server and SQL Database](#).
 - If you are installing the software on a network, you must also upgrade the Enterprise Clients. Refer to [Updating Individual Enterprise Clients, page 12](#) for detailed instructions.
- All users must be logged out of the Enterprise software until the database upgrade is complete.
- ***Trimble recommends that you do this during a non-busy time or after hours to minimize disruptions in your company's workflow.***

Update the Server and SQL Database

1. To update the server, run the Enterprise setup on the computer where the application server resides. This is the computer clients connect to when the Enterprise software is opened.
2. The Enterprise install routine automatically detects the versions you can upgrade *from*.

 **Tip** – Upgradable versions of the database can be viewed by clicking on **View database versions**. Refer to the [Essential Release Information](#) for compatible “update from” database versions,

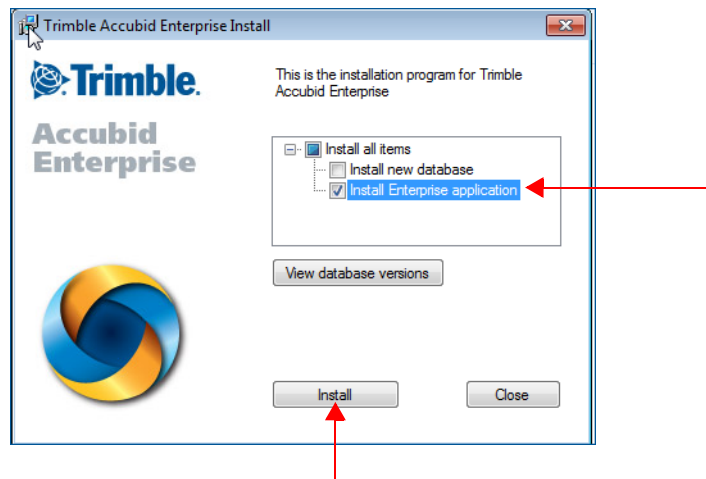


The version number changes from release-to-release.

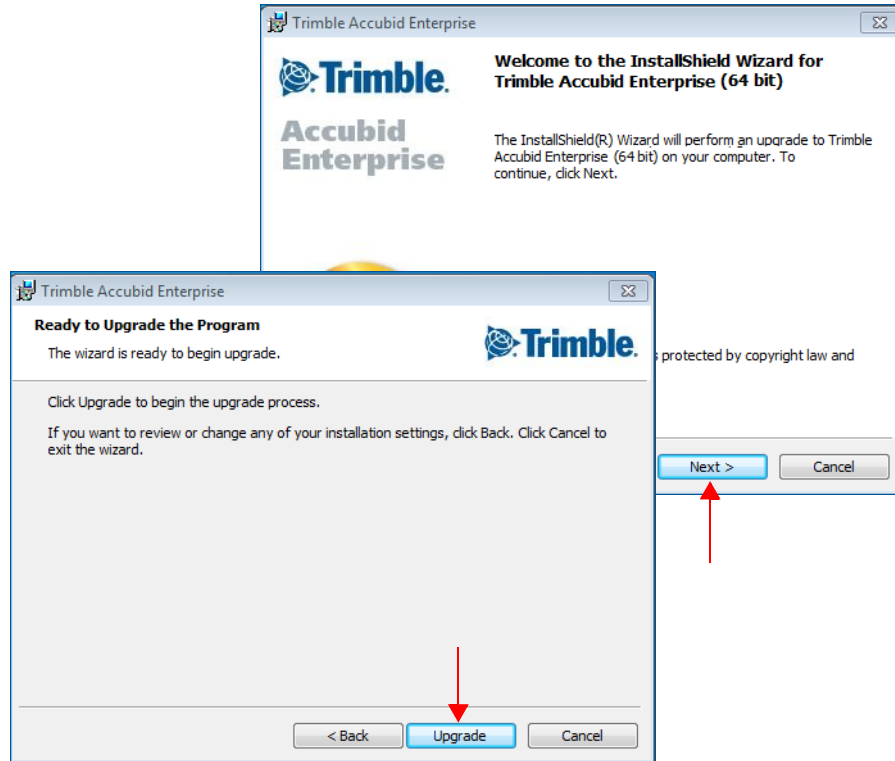
3. Select the **Install all items** checkbox and then click **Install**.
4. Follow the on-screen prompts to complete the server installation.

Updating Individual Enterprise Clients

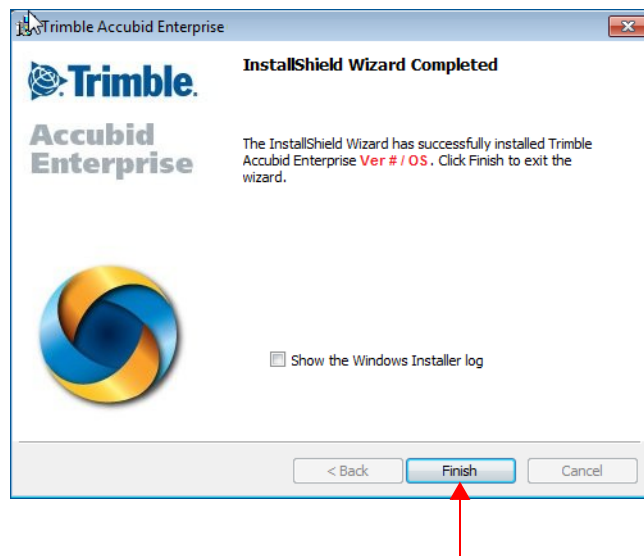
1. To update the client, run the Enterprise setup. Select only the **Update Enterprise application** checkbox .
2. Click **Install**.



3. Click **Next** and then **Upgrade**.



4. The installation routine begins. When the update has been successfully installed, click **Finish** button.



Trimble® Integrator

To take full advantage of the features available in the Trimble Integrator, Trimble recommends you install the update included in this release.

1. In the Trimble Accubid Enterprise welcome screen, click **Trimble® Integrator**. The *Welcome to the InstallShield Wizard for Trimble Integrator* screen displays. Review the information on-screen and then click **Next**.
2. Review the information in the *License Agreement* screen. Click **I Accept the terms of the license agreement**.
 - You must accept the terms of the license agreement to continue the installation.
 - If you wish to obtain a hard copy of the agreement, click **Print**.Click **Next**.
3. In the *Destination Folder* screen, click **Next**. **Trimble recommends you install the Integrator software in the default location.**
4. In the *Ready to Install the Program* screen, click **Install**.
5. When complete, click **Finish**.

Complete Installation Procedures

In the Trimble Accubid Enterprise welcome screen, click **Exit**.

Provided you followed all instructions in this document, you are now ready to use this release of the software applications.

Final Steps

- Open the Enterprise software using the method you normally do. Provided you followed all instructions in this document, you are now ready to use this release of the software.
- The online help system contains step-by-step instructions on using many of the features included in this release.

Add Column to Extension

Update customers may have customized the Extension grid. Because of this, the installation routine does not modify custom layouts. If you wish to show this field in the Extension screen, you can manually add it.

Note – *The requirement of this procedure depends on the version you are upgrading from. If you are up-to-date on installing Enterprise software updates, you may have already added this column to the Extension in a previous release.*

1. Click in the header and then click **Add/Remove Columns**.
2. In the Customizations dialog, click **Labor Cond.** and then drag it to the location in the header where you want it to display.
3. Close the Customization dialog.

Product Assistance

Trimble offers several avenues to obtain help using the Enterprise software program.

Accessing the Online Help

The online help is easy to use and is accessible through any of the following methods:

- Press the **F1** key at any time while using the program to display help for the current screen or dialog.
- Click **Menu** tab in any screen and then select **Help**. You can scan the Table of Contents, use the Index, or the Search function to find the information you are looking for.
- Use the **Index** tab to locate key words throughout the help system.
- Use the **Search** tab to find specific words used in the help system; for example, you might search for the word delete for instructions on deleting certain data from your system.

Trimble MEP Client Services

Before calling Client Services, we suggest you consult the online help. Many of the common procedures and questions are covered in this system.

Trimble MEP Client Services is available during regular business hours Monday through Friday.

Note – *We are not available on major holidays.*

North America

Toll-free Telephone 1-800-361-3030

Outside North America

Telephone 1-905-761-8800

Internet e-mail accubidsupport@trimble.com

Website mep.trimble.com