

Trimble® Accubid Enterprise | 6.9.1 Release Notes

Periodically, Trimble provides software releases that include modifications and enhancements to our software applications. We are pleased to announce the **Version 6.9.1 release** of our **Enterprise** software product line. This document provides you with important information pertaining to the feature modifications included in this release of our software.

Trimble® LiveCount™ Software Compatibility

The LiveCount application allows you to use an electronic project drawing to measure and count items. This release of Enterprise is compatible with LiveCount, version 5.0, as well as several previous versions of the software. **Note:** For a complete LiveCount version compatibility list, click [here](#).

Modifications

Enterprise Estimating

- The *Copy/Paste* functionality is now available in the Cost Allocation screens (in the Closeout).
- When global values are updated in the Enterprise Manager, only those values relevant to the Takeoff item display. **Note:** In previous versions, all values displayed, regardless of whether they are being used.
- When you pin manufacturer cost values in the Enterprise Manager, the pinned cost value now displays properly on the Results tab in the *Vendor Pricing* screen.
- In Takeoff, the Structural Elevation now refreshes updated values as expected (when changed in the Breakdown).

Processing Improvements

Several modifications have been made to the Enterprise software that significantly improve processing time. These include, but are not limited to:

Optimization for Citrix Server systems to provide faster processing times.

Install Update Recommendation

- See the following pages for instructions on installing this update.
- Depending on the version you are upgrading from, the update may take additional time. **Trimble recommends that you install software updates during the least busy time of your day.**

This document is for informational purposes only and is not a legally binding agreement or offer.
Trimble makes no warranties and assumes no obligations or liabilities hereunder.



Trimble® Accubid Enterprise

Updating your programs to Version 6.9.1...

Important Information

This document covers installing the update to the Trimble® Accubid Enterprise Estimating and ChangeOrder software, Version 6.9.1.

Note: *This document is not an all-inclusive instructional document. It provides only an overview of the installation process. You should use this document in conjunction with the **Update Installation Instructions** section in the **Trimble Accubid Enterprise Release Notes** document. This document provides step-by-step instructions for installing the required 6.9.1 updates.*

To ensure proper operation of the Trimble Accubid Enterprise software applications, you must install according to the procedures outlined in the provided documentation.

Preliminary Installation Steps

- The instructions in this document assume you have already downloaded the installation files from the Trimble Client Portal.
- You must have a previous version of the Enterprise software on the computer(s) where you are installing this update.
- Verify the software tier you have installed before beginning the update procedure. **Go to Menu / Help / About.**



Make note of this information as you will need it during the installation routine.

- All users must be logged out of the Enterprise Estimating software before installing this update.
- **Trimble recommends that you install this update during a non-busy time or after hours to minimize disruptions in your company's daily workflow.**



**You are now ready to install
Trimble Accubid Enterprise Software
Version 6.9.1**

Please refer to the instructions on the following pages.

Step 1

Begin Installation Procedure

Locate the downloaded installation file. Double-click on it. The installation routine prepares the files. The Trimble Accubid Enterprise Installation media screen opens.

Step 2

Review/Print the Release Notes on the installation media



The Release Notes document provides detailed step-by-step instructions to install this update. Trimble recommends you use this document in conjunction with the release notes to ensure proper operation of your software when installation is complete.

Print Release Notes Document:

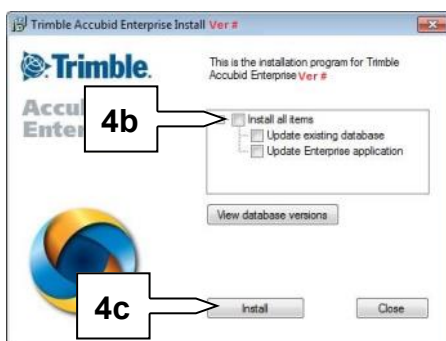
- Click on the **Release Notes**.
- The document opens on-screen. Click the **Print** button.
- Review/follow procedures in the Update Installation Instructions section of this document.

Step 3

Install Trimble® Accubid Enterprise Server/SQL Software Update

To update the server, run the Enterprise setup on the computer where the application server resides. This is the computer clients connect to when the Enterprise software is opened.

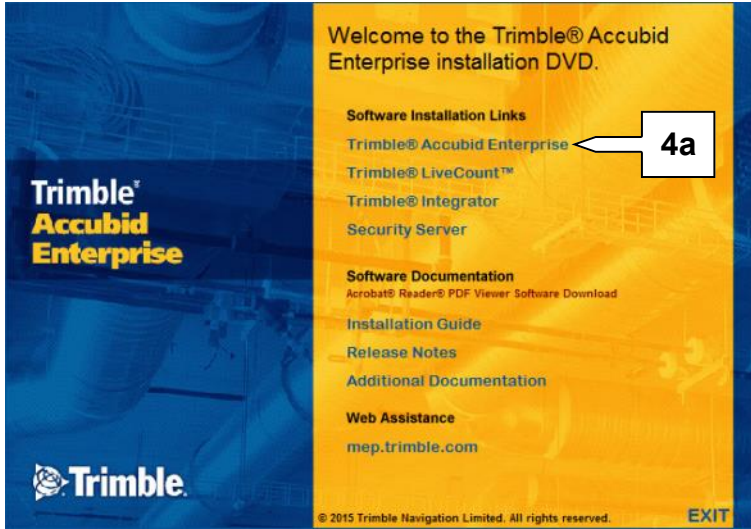
- Click **Trimble Accubid Enterprise**. The Enterprise install routine automatically detects the versions you can upgrade *from*.



- Select the **Install all items** checkbox and then click **Install**.
- Follow the on-screen prompts to complete the server installation.

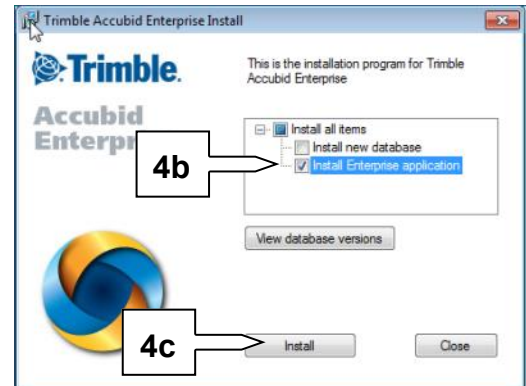
Step 4

Update Individual Enterprise Clients



To update the server, run the Enterprise setup on all client computers where the application server resides.
Note: This is the workstation that connects to the server.

a. Click **Trimble Accubid Enterprise**.



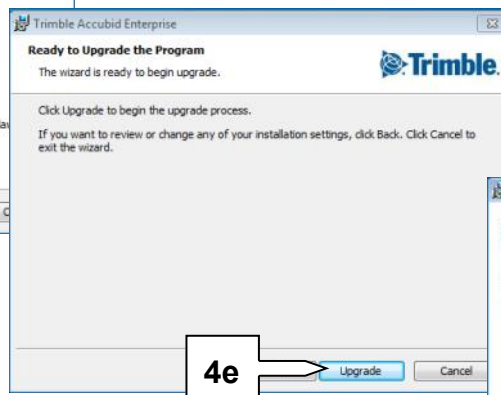
b. Select only the **Update Enterprise application** checkbox .

c. Click **Install**.

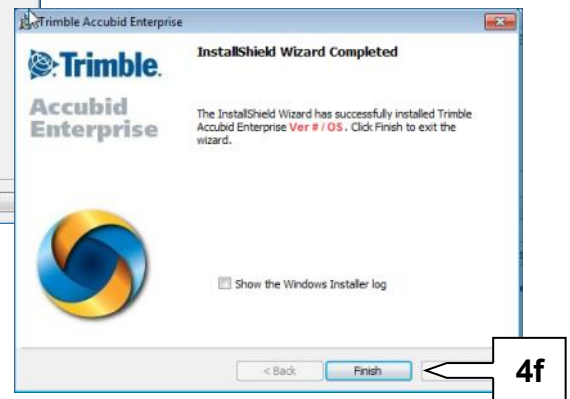


d. In the Welcome screen, click **Next**..

e. In the Ready to Upgrade the Program, click **Upgrade**.



e. When the upgrade has been successfully installed, click **Finish**..



Step 5

Additional Software (if required)

The Trimble Accubid Enterprise product includes additional software that you may need to install. This includes:

- Trimble® LiveCount™ software
- Trimble® Integrator

Before installing these programs, please ensure that you are licensed to use the specific product.

Note: If you are licensed, to gain full benefits of the release of these applications, Trimble recommends that you install all applicable updates.

Refer to the corresponding product documentation for instructions on installing additional programs.