

6.5 | 6.6 RELEASE NOTES

Trimble® Accubid Enterprise Software

- Introduction
- New Features/Modifications
- Update Installation Instructions
- Product Assistance

Toronto Office

Trimble Canada Ltd.
9131 Keele Street
Suite A7
Vaughan, Ontario L4K 0G7
Canada

Copyright and Trademarks

©2005-2015 Trimble Navigation Limited. All rights reserved.

Trimble and the Globe & Triangle logo are trademarks of Trimble Navigation Limited, registered in the United States and in other countries. Accubid is a trademark of Trimble Navigation Limited, registered in the United States and/or in other countries. All other trademarks are the property of their respective owners.

Trimble® Accubid Enterprise, Change Management, and LiveCount are trademarks of Trimble Navigation Limited. Other brand and product names are trademarks or registered trademarks of their respective holders.

This publication, or parts thereof, may not be reproduced in any form, by any method, for any purpose, without the written consent of Trimble Navigation Limited.

Release Notice

The topics within this document are:

- Subject to change without written notice.
- Companies, names, and data used in any examples are fictitious.
- Screenshots included in the help topics may not be exactly as in the software application

Edition

This is the Trimble® Accubid Enterprise software Release Notes (Revision A_ENG); Release 6.5 and 6.6.

Part Number Enterprise.9050.08.0815_Release Notes
Wednesday, August 05, 2015 10:35 am

Introduction

This document provides basic information about new features, enhancements, and modifications in **releases 6.5 and 6.6 of the Trimble® Accubid Enterprise software**. More detailed information can be found in the online help system.

What You Receive with this Release

- New/Modified features outlined in this document
- Updated online help
- Electronic documentation available on the installation media and the Trimble Client Portal

Upgrade Procedure

Please refer to the Enterprise [Update Installation Instructions](#) at the end of this document for information on requirements to install this update. Trimble recommends that you print these instructions to help ensure proper operation of the software application after installation.

Note – *In the installation routine, selecting the Update database option installs only program modifications and enhancements. Your existing tables, specifications, and estimates are not impacted in any way.*

Compatibility

Operating Systems

This version of the Enterprise software is compatible with 32-bit and 64-bit Windows® 7 and Windows® 8 operating systems. For a more complete listing of Technical Specifications, please go to our website at mep.trimble.com to review the technical specifications for the Enterprise software (*Products / Trimble Accubid Enterprise Estimating / Technical Specifications*).

Trimble® Accubid LiveCount™ Compatibility

This release of the Enterprise software is compatible with the Trimble Accubid LiveCount software, release 4.0.1.

Trimble® PipeDesigner 3D® Integration

The Enterprise software includes the ability to import drawing data from a Trimble® PipeDesigner 3D® drawing. Refer to the online help in each of the software applications for detailed instructions.

Hard Dollar Integration

The Enterprise software includes a seamless integration with the Hard Dollar software. This is accomplished through a web service; nothing is required within the Enterprise software. Data is automatically passed to the Hard Dollar database.

New Features/Modifications

Note – This document lists new features and modifications in the Trimble Accubid Enterprise application. The following modules/areas have been modified.

- Enterprise Manager
- Enterprise Estimating
- Report Center
- Processing Improvements

Enterprise Manager

Modifications and Enhancements listed in this section apply to the Enterprise Manager application.

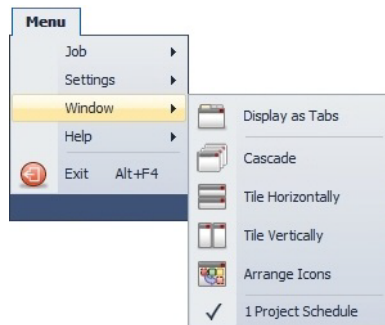
- **Power Search & Update**
In some cases, when selecting certain parameters in the Power Search & Update module, additional unnecessary data was displayed. The results now display only the data requested.

Enterprise Estimating

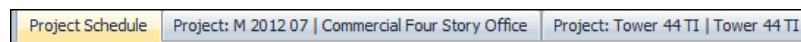
Modifications and Enhancements listed in this section apply to the Enterprise Estimating application.

Project Display

The Enterprise Estimating software provides several methods to display windows in the application. You can set your preferred option under **Menu / Window**.



Beginning with this release, the default project display method will be Display as Tabs. This method provides easy access to the projects you have open in your estimating session, as well as to your project schedule.



When you install this release of the Enterprise software as an update to a previously installed version, your current settings will not change; however, if you install as a new user, the new setting becomes effective.

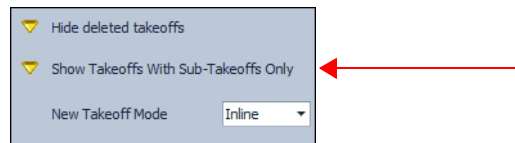
Takeoff

- **Job Items/Assemblies**

- When you add a job item as a sub-takeoff to a takeoff, it will be retained when the takeoff is copied from one job to another.
- Adding a job assembly as a sub-takeoff to a takeoff, all items (including any job items) will be retained when the takeoff is copied from one job to another.

- **Filters**

You can now filter the Audit Trail to show only takeoffs with sub-takeoff.



- **Assemblies**

- When in Advanced Takeoff mode, values entered in assembly variables are now calculated as expected.
- When you take off an assembly in Detailed Takeoff mode and enter a count or quantity, the value is now automatically saved. You no longer need to press **Enter** on your keyboard.

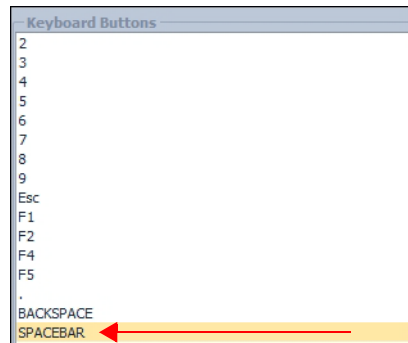
- **Material \$/Labor Hours**

When you copy and paste takeoff lines, the Material \$ and Labor Hours values display as expected in the Audit Trail.

- **Takeoff Pad**

You can now add a spacebar to the Takeoff Pad. This provides you with the ability to toggle a checkbox selection on/off directly from the TakeOff Pad.

Keyboard functions allow you to work solely from the Takeoff Pad without the requirement to go back and forth from the pad to the keyboard.

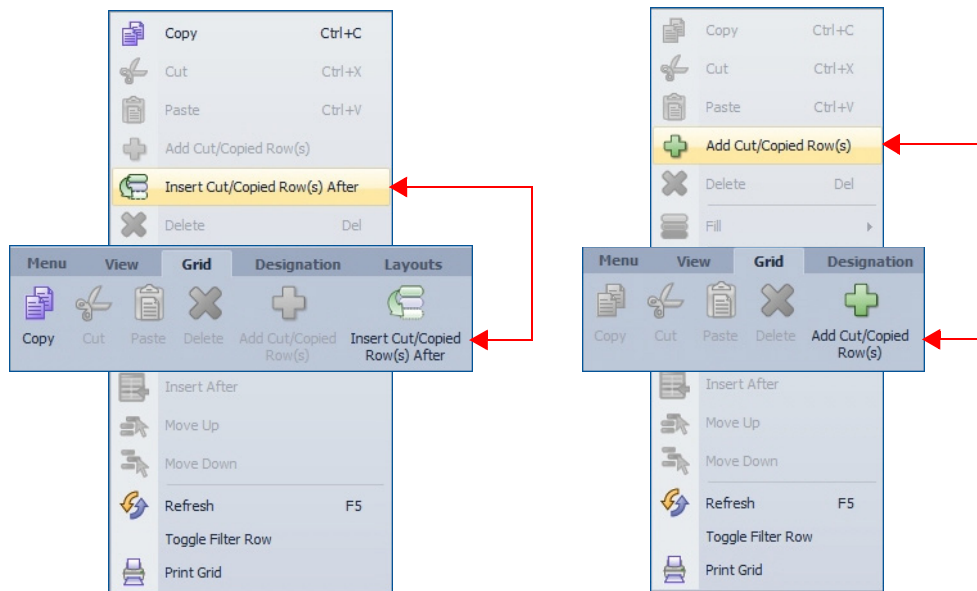


-
- **LiveCount™ Drawings**
From time-to-time, when multiple users were working in different projects, the incorrect drawing opened in the LiveCount software. The software now consistently pulls the correct drawing based on the selected Takeoff Breakdown.
 - **Detailed Takeoff Mode**
The Takeoff Attribute icons now automatically display on-screen. A manual refresh of the screen is no longer required.
 - **Measure Takeoff Dialog**
Headers have been reinstated in this dialog. This allows you to resize the columns as needed to display all data.
 - **Drawing Scale**
When taking off using a digitizer, the scale originally selected for the drawing remains static.
 - **Designations**
When the *Display designations as pad* checkbox is selected , and you take off consecutive Designations, the Designations tab remains focused.
 - **Copy Takeoffs**
When you copy a takeoff from another job, it will now automatically copy any variables and values are also copied. This applies even if the Global Assembly itself has changed.
 - **Breakdowns**
When you insert a new row in the first position in a takeoff breakdown, it now displays in the breakdown as the first breakdown in the selection list. It will also be automatically selected when you copy takeoffs.
 - **Assemblies**
When taking off a global or job assembly, you no longer have to press to save the quantity or measure values. These values are automatically saved.
Note: *This also affects sub-assemblies.*

Designations

- **Insert/Add Copied Items**
When you copy and paste a Designation, you now have the option to specify the location where you want the pasted data to display. An *Insert Cut/Copied Row(s) After* command is available on the ribbon, as well as the right-click menu. This will insert your copied row after the selected row in the grid.

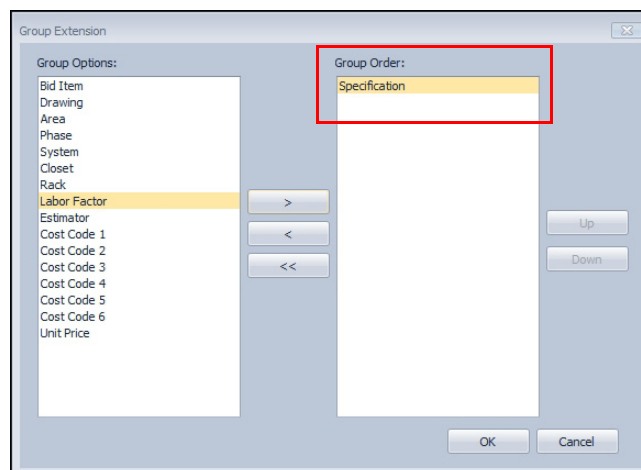
Note – If the folder does not contain any data, the menu command is to Add Cut/Copied Rows. This places the pasted row in the first line position.



- Assembly Attributes**
 When you add an Assembly to a Designation, attributes are now automatically populated if you have only one attribute per part, and it is not determined based on a formula.
- Job Items**
 Copying Designations from one estimate or job to another, now also includes all Job Items that are part of the copied Designation, as well as the associated job item folder structure.

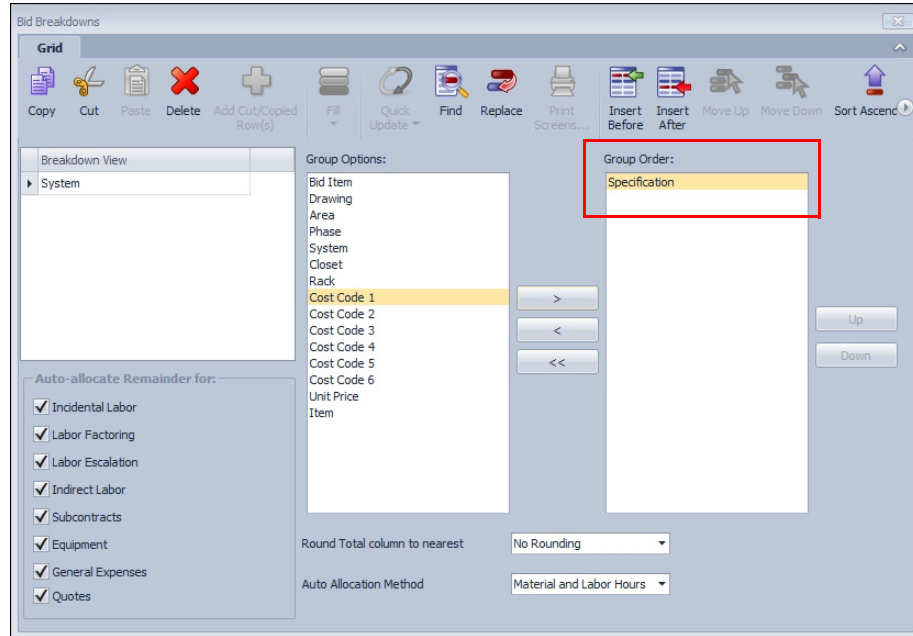
Extension


- Specification Grouping**
 You can now group the Extension by Specification.



This feature is available in both Estimates and Proposed Change Orders (PCOs).

Grouping by Specification is now also available in the **Bid Breakdown** module.



 **Tip** – When the Bid Breakdown is grouped by Specification, it will be read only. No changes can be made when grouped.

Note – *Because specifications are not applicable to the BidWinner or Change Management Standard tiers of the Enterprise software, this feature is not available in those modules.*

- **Labor Calculations**

When you delete a takeoff, change Job Weight Factors values for an item, and then subsequently undelete the takeoff, the Extension now properly reflects labor calculations based on the changed value.

- **Field/Value Display**

The following modifications/enhancements pertain to how/when fields and values display in the Extension.

- **Labor Condition**

The Labor Condition now displays in the Extension, providing all of the takeoffs for an item are based on the same Labor Type. If more than one labor type is used for any item, the Labor Condition will be blank.

Note – *Update customers may have customized the Extension grid. Because of this, the installation routine does not modify custom layouts. If you wish to show this field in the Extension screen, you can manually add it. Refer to the [Final Steps](#) section in this document for instructions on adding the Labor Condition column.*

For new installations of the Enterprise software, the default layout includes the Labor Cond. column.

- **Typical Takeoff**
When you remove a count from a Typical Takeoff, it now resolves as expected.
- **Takeoff Breakdowns**
When a takeoff is reassigned from a normal breakdown to a typical takeoff breakdown, the extension now calculates properly.
- **Material \$/Labor Hours**
Occasionally, when the Extension was grouped, the values in the **Material \$** and **Labor Hours** fields did not agree with the “ungrouped” view. This may occur when the Enterprise application was closed before the takeoff was completely resolved. Both views now agree.
- **Total Labor Field**
The Total Field Labor field now rounds up or down as expected.

Bid Summary Values

When an estimate has multiple Bid Summaries, and you make a change on any of the Closeout screens, the values entered now automatically save. You no longer need to move to another row or press on your keyboard.

Closeout

The *Description* field displays is now limited to 64 characters. This limit should eliminate truncation of the field (in most cases).

Report Center

- The Estimate report template has been updated to properly reflect date a price changed (Price Date).
Note – *If there is no value in the Price Date field, this field will be blank in the report.*
- In the Final Pricing screen, the order has been changed as follows: *Net Cost, Selling Price, Final Price.*

Processing Improvements

Several modifications have been made to the Enterprise software that significantly improve processing time. These include, but are not limited to:

- Changing Multiple Takeoffs to a different Takeoff Breakdown
- Grouping Extensions
- Quotes tab now loads faster

-
- Loading of assemblies with numerous parts
 - Resolving Takeoffs when multiple users logged in (Assemblies)
 - Closeout calculations
 - Exporting estimates to a Microsoft® Excel® template
 - Copying jobs
 - Changing Takeoff Breakdowns for multiple takeoffs when the Audit Trail is filtered

Essential Release Information

- **Microsoft SQL 2012**
This installation routine in this release of the Enterprise software installs Microsoft SQL 2012. You will be unable to attach the database *packaged* with this version of the software to a lower version of SQL. Migrating the database from an earlier version of SQL will continue to work; for example, if you have SQL 2008 and migrate to Enterprise version 6.6.
- **Compatible Database “Update From” Versions**
The Enterprise software can be updated directly from the following database versions:

| Version | Build |
|-----------------|-------|
| 6.5 | 55763 |
| 6.4 | 55290 |
| 6.3.1 | 53862 |
| 6.3 | 53222 |
| 6.2 | 51571 |
| 6.1.1 | 49424 |
| 6.1.0 | 48306 |
| 6.0.1 Hot Fix 1 | 45001 |

- If the currently installed database version is not in the list above, please contact MEP Client Services at 1-800-361-3030 for assistance prior to installing.
- **LiveCount™ Procedures**
When you are working in the LiveCount software, you must send your work to the Enterprise Estimating application *before* resuming work on your estimate. Failure to do so results in loss of the work completed in the LiveCount software.
- The Bid Summary toolbar is now available for viewing only in the Proposed Change Order (PCO) window. The available options in the Bid Summary are Manage Bid Summaries and Re-Extend. You cannot create, rename, or delete Bid Summaries from the PCO / Bid Summary screen.

Note – *Only one Bid Breakdown is allowed in a PCO. Under certain circumstances, some customers were able to copy more than one Bid Breakdown in the Proposed Change Order (PCO) module. When this occurred, material was accounted for in the final price, but not displayed. The availability of the Bid Summary allows those customers to view, but not alter, these secondary breakdowns.*

-
- **Scalex Support**
This release of the Enterprise software no longer supports the Scalex measuring tool. This is due to Scalex compatibility issues with the Windows 64-bit operating system.
 - **Product Support**
If you have any questions regarding the Essential Release Information presented, please see the [Product Assistance](#) section for MEP Client Services contact information.


Update Installation Instructions

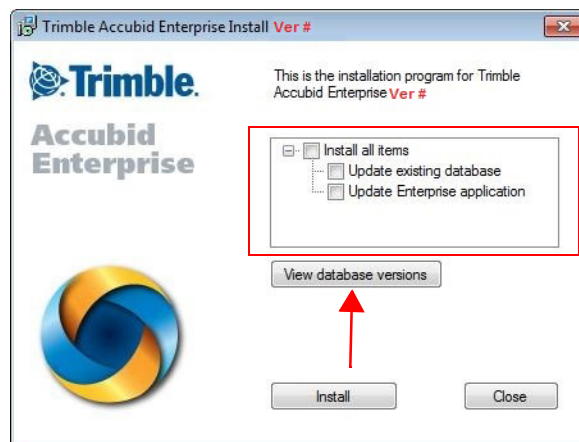
Installation Procedures

- Depending on the size of your database, this update may take a substantial amount of time to complete (approximately 40 minutes per database). Trimble recommends that you install this update during a non-busy time to avoid work slowdowns/stoppages.
 - If the Enterprise software is installed on a single computer, without a separate server, refer to [Update the Server and SQL Database](#).
 - If you are installing the software on a network, you must also upgrade the Enterprise Clients. Refer to [Updating the individual Enterprise Clients](#), page 15 for detailed instructions.
- All users must be logged out of the Enterprise software until the database upgrade is complete. **Trimble recommends that you do this during a non-busy time or after hours to minimize disruptions in your company's workflow.**

Update the Server and SQL Database

1. To update the server, run the Enterprise setup on the computer where the application server resides. This is the computer clients connect to when the Enterprise software is opened.
2. The Enterprise install routine automatically detects the versions you can upgrade from.

 **Tip** – Upgradable versions of the database can be viewed by clicking on **View database versions**. Refer to the [Essential Release Information](#) for compatible “update from” database versions,

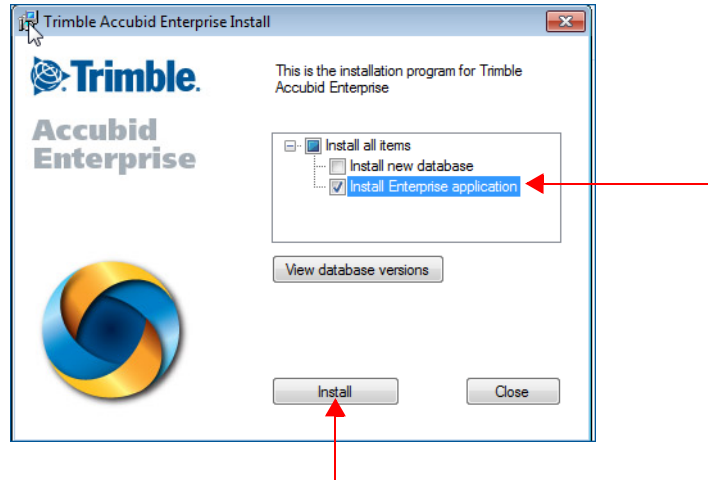


The version number changes from release-to-release.

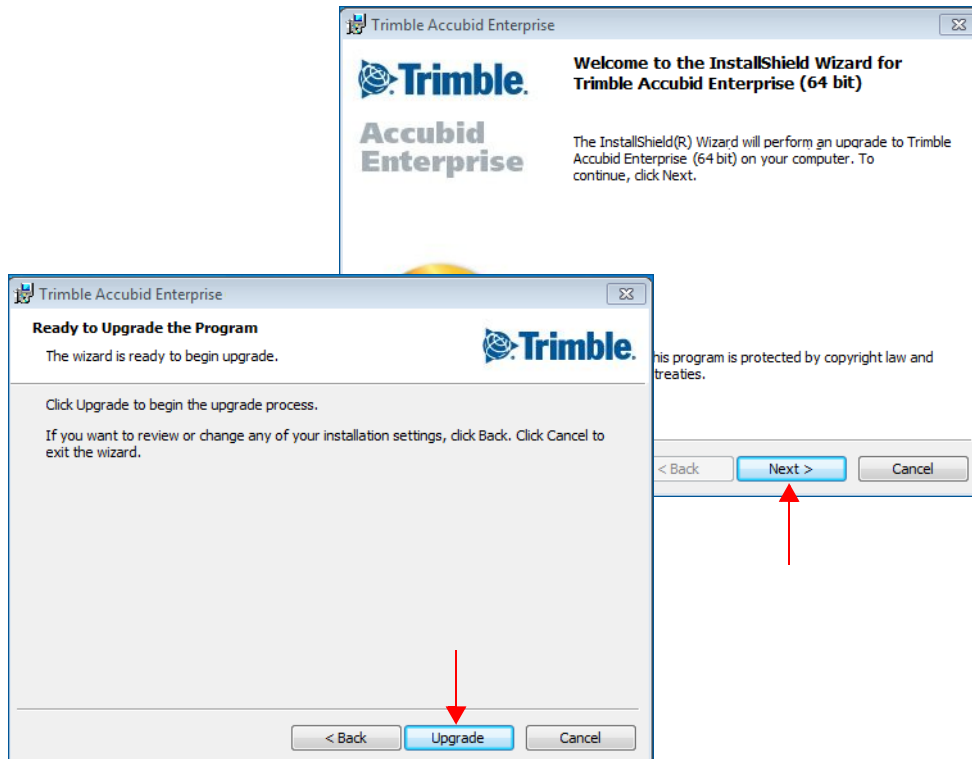
3. Select the **Install all items** checkbox and then click **Install**.
4. Follow the on-screen prompts to complete the server installation.

Updating the individual Enterprise Clients

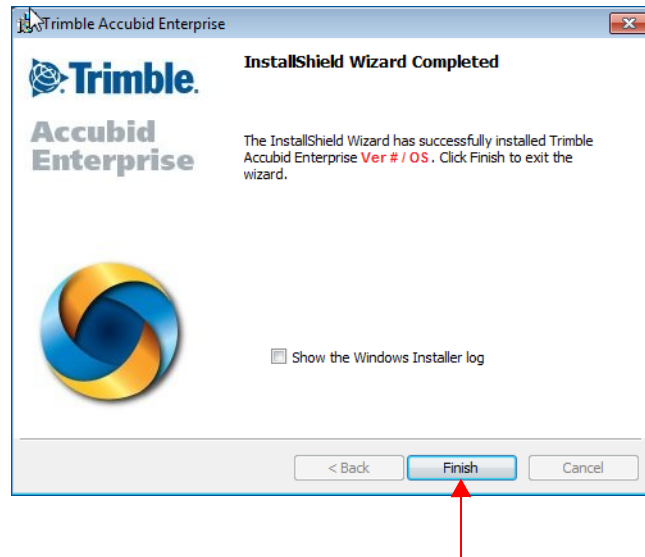
1. To update the client, run the Enterprise setup. Select only the **Update Enterprise application** checkbox .
2. Click **Install**.



3. Click **Next** and then **Upgrade**.



4. The installation routine begins. When the update has been successfully installed, click **Finish** button.



Final Steps

- Open the Enterprise software using the method you normally do. Provided you followed all instructions in this document, you are now ready to u6.6se this release of the software.
- The online help system contains step-by-step instructions on using many of the features included in this release.

Add Column to Extension

Update customers may have customized the Extension grid. Because of this, the installation routine does not modify custom layouts. If you wish to show this field in the Extension screen, you can manually add it.

1. Click in the header and then click **Add/Remove Columns**.
2. In the Customizations dialog, click **Labor Cond.** and then drag it to the location in the header where you want it to display.
3. Close the Customization dialog.

Product Assistance

Trimble offers several avenues to obtain help using the Enterprise software program.

Accessing the Online Help

The online help is easy to use and is accessible through any of the following methods:

- Press the **F1** key at any time while using the program to display help for the current screen or dialog.
- Click **Menu** tab in any screen and then select **Help**. You can scan the Table of Contents, use the Index, or the Search function to find the information you are looking for.
- Use the **Index** tab to locate key words throughout the help system.
- Use the **Search** tab to find specific words used in the help system; for example, you might search for the word delete for instructions on deleting certain data from your system.

Trimble MEP Client Services

Before calling Client Services, we suggest you consult the online help. Many of the common procedures and questions are covered in this system.

Trimble MEP Client Services is available during regular business hours Monday through Friday.

Note – *We are not available on major holidays.*

North America

Toll-free Telephone 1-800-361-3030

Outside North America

Telephone 1-905-761-8800

Internet e-mail accubidsupport@trimble.com

Website mep.trimble.com