

## 6.7 RELEASE NOTES

# Trimble® Accubid Enterprise Software

- Introduction
- New Features/Modifications
- Update Installation Instructions
- Product Assistance

## **Toronto Office**

Trimble Canada Ltd.  
9131 Keele Street  
Suite A7  
Vaughan, Ontario L4K 0G7  
Canada

## **Copyright and Trademarks**

©2005-2015 Trimble Navigation Limited. All rights reserved.

Trimble and the Globe & Triangle logo are trademarks of Trimble Navigation Limited, registered in the United States and in other countries. Accubid is a trademark of Trimble Navigation Limited, registered in the United States and/or in other countries. All other trademarks are the property of their respective owners.

Trimble® Accubid Enterprise, Change Management, and LiveCount are trademarks of Trimble Navigation Limited. Other brand and product names are trademarks or registered trademarks of their respective holders.

This publication, or parts thereof, may not be reproduced in any form, by any method, for any purpose, without the written consent of Trimble Navigation Limited.

## **Release Notice**

The topics within this document are:

- Subject to change without written notice.
- Companies, names, and data used in any examples are fictitious.
- Screenshots included in the help topics may not be exactly as in the software application

## **Edition**

This is the Trimble® Accubid Enterprise software Release Notes (Revision A\_ENG); Release 6.7.

Part Number Enterprise.9050.08.0915\_Release Notes  
Tuesday, September 15, 2015 2:20 pm

---

## Introduction

This document provides basic information about new features, enhancements, and modifications in **release 6.7 of the Trimble® Accubid Enterprise software**. More detailed information can be found in the online help system.

### What You Receive with this Release

- New/Modified features outlined in this document
- Updated online help
- Electronic documentation available on the installation media and the Trimble Client Portal

### Upgrade Procedure

Please refer to the Enterprise [Update Installation Instructions](#) at the end of this document for information on requirements to install this update. Trimble recommends that you print these instructions to help ensure proper operation of the software application after installation.

**Note** – *In the installation routine, selecting the Update database option installs only program modifications and enhancements. Your existing tables, specifications, and estimates are not impacted in any way.*

## Compatibility

### Operating Systems

This version of the Enterprise software is compatible with 32-bit and 64-bit Windows® 7, Windows 8, and Windows® 10 operating systems. For a more complete listing of Technical Specifications, please go to our website at [mep.trimble.com](http://mep.trimble.com) to review the technical specifications for the Enterprise software (*Products / Trimble Accubid Enterprise Estimating / Technical Specifications*).

### Trimble® Accubid LiveCount™ Compatibility

This release of the Enterprise software is compatible with the Trimble Accubid LiveCount software, release 4.0.1.

### Trimble® PipeDesigner 3D® Integration

The Enterprise software includes the ability to import drawing data from a Trimble® PipeDesigner 3D® drawing. Refer to the online help in each of the software applications for detailed instructions.

---

## **Hard Dollar Integration**

The Enterprise software includes a seamless integration with the Hard Dollar software. This is accomplished through a web service; nothing is required within the Enterprise software. Data is automatically passed to the Hard Dollar database.

# New Features/Modifications

This document lists new features and modifications in the Trimble Accubid Enterprise application.

## Enterprise Manager

### Power Search & Update

When performing a Power Search & Update, the Measure Type field displays data in the expected format.

## Enterprise Estimating

Modifications and Enhancements listed in this section apply to the Enterprise Estimating application.

### Extension

- The Extension Grouping functionality has been improved to allow for faster processing as follows:
  - When you select data to group, only the selected data loads in the Extension screen. For example, the graphic below is grouped by Drawing. Only the data relating to the drawings is displayed.

...		Drawing	Total Mat. \$	Total Field Labor	Total Shop Labor	Total Area	Total Volume	Total Weight
▶ 1	☐    C-01		96,609.38	2,288.756				
2	☐    C-04		397,718.19	9,832.212				

- When grouped, you can click **+** to open the items under the Group.

...		C-01		Attributes	Item Description	Qty	Shop Qty	Price U	Price	Disc.	Cost	Vendor Price	Cost Adj %	Net Cost	Total Mat. \$	Mat. Cond.	
▶ 1	☐			MDF		1,000		E							175.32	788.94	Quoted
2	☐			IDF-1		1,000		E									Quoted
3	☐	CMP - Blue		Cable UTP Category 5e		4,500,000		M							335.06	62,287.65	Quoted
4	☐	CMP - Blue		Cable UTP Category 6		185,900,000		M							1,136.00	181.76	Quoted
5	☐	12-Strand ...		Fiber Optic Cable Distribution Tight Buffer OM3 Aqua		160,000		M									Quoted
6	☐	White		Modular Outlet UTP Category 5e		16,000		E							5.97	95.52	Quoted
7	☐	Blue		Modular Outlet UTP Category 6		762,000		C							872.00	6,644.64	Quoted
8	☐	Green		Modular Outlet UTP Category 6		400,000		C							872.00	3,488.00	Quoted

You can continue to drill down as needed.

- When you have drilled down to view specific data, “bread crumbs” display in the title bar. This allows you to quickly move around within the Groups.

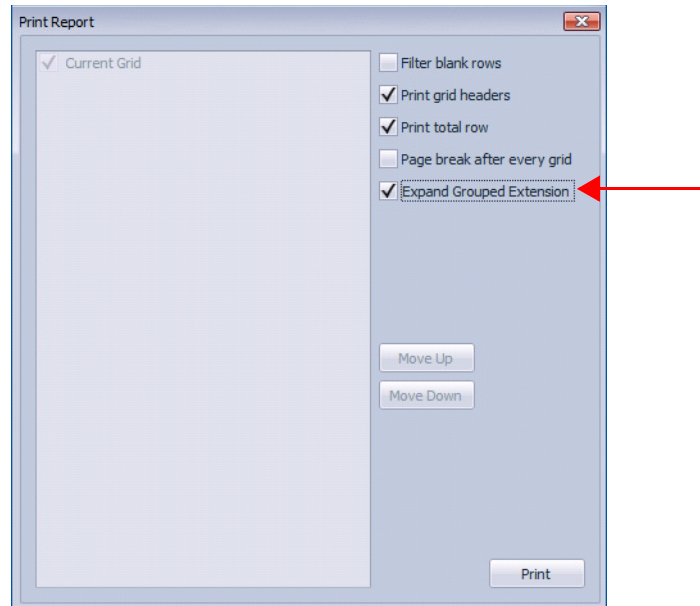
Ellipsis → **...** || C-01 ← Bread Crumbs

...		C-01		Attributes	Item Description
▶ 1	☐			MDF	
2	☐			IDF-1	
3	☐	CMP - Blue		Cable UTP Category 5e	
4	☐	CMP - Blue		Cable UTP Category 6	

---

When you click the ellipsis, you are returned to the previous screen (prior to the drill down). You can also press **[Esc]** on your keyboard.

- When the Extension is grouped, you now have an *Expand Grouped Extension* option in the Print Report dialog. This allows you to control data included in your report.



- Labor Factoring now used the same calculation and rounding methods in all views. Values now agree, regardless of the view you are using.

## Vendor Pricing

Items sold per package now calculate pricing accurately. This affects box/spool/reel items with a quantity per package greater than one. Additionally, items priced by measurement unit are also affected.

## Takeoff

- Estimator filtering now remains static until turned off.  
**Note** – *From time-to-time, filtering disabled itself after taking off multiple items.*
- The sub-takeoff grid now displays the same information as the main takeoff grid.  
**Note** – *If you have customized your grid, you must reset back to shipped defaults to see the changes. You can then customize your grid based on the new format.*

---

## Closeout

- Labor Factoring now calculates and rounds using the same method as the Final Pricing Screen.
- Copying data and then using the *Insert Copied* feature between Bid Summaries on the Subcontractor and Quotes tab now works as expected.

## Report Center

The Change Order report (*Report Type: PCO*) now displays the client name properly.

## Processing Improvements

Several modifications have been made to the Enterprise software that significantly improve processing time. These include, but are not limited to:

- Exporting project data to Microsoft® Excel®
- Deleting numerous field labor line items in the Closeout
- Loading the Closeout on larger projects (including opening the Quote screen)
- Copying Takeoff Pads

## Terminology

**ITS** (Information Transport Systems/Information Technology Systems)  
*is now referenced as*

**ICT** (Information & Communication Technology).

This change is in accordance with BICSI naming. It also better accommodates new data offered by Trade Service Company



**Tip** – This modification affects data/labels within the Enterprise software, as well as help systems.

---

## Essential Release Information

- **Microsoft SQL 2012**  
This installation routine in this release of the Enterprise software installs Microsoft SQL 2012. You will be unable to attach the database *packaged* with this version of the software to a lower version of SQL. Migrating the database from an earlier version of SQL will continue to work; for example, if you have SQL 2008 and migrate to the current Enterprise.
- **Compatible Database “Update From” Versions**  
The Enterprise software can be updated directly from the following database versions:

Version	Build
6.6	56545
6.5	55763
6.4	55290
6.3.1	53862
6.3	53222
6.2	51571
6.1.1	49424
6.1.0	48306
6.0.1 Hot Fix 1	45001

- If the currently installed database version is not in the list above, please contact MEP Client Services at 1-800-361-3030 for assistance prior to installing.
- **LiveCount™ Procedures**  
When you are working in the LiveCount software, you must send your work to the Enterprise Estimating application *before* resuming work on your estimate. Failure to do so results in loss of the work completed in the LiveCount software.
- The Bid Summary toolbar is now available for viewing only in the Proposed Change Order (PCO) window. The available options in the Bid Summary are Manage Bid Summaries and Re-Extend. You cannot create, rename, or delete Bid Summaries from the PCO / Bid Summary screen.

**Note** – *Only one Bid Breakdown is allowed in a PCO. Under certain circumstances, some customers were able to copy more than one Bid Breakdown in the Proposed Change Order (PCO) module. When this occurred, material was accounted for in the final price, but not displayed. The availability of the Bid Summary allows those customers to view, but not alter, these secondary breakdowns.*



- 
- **Scalex Support**  
The Enterprise software no longer supports the Scalex measuring tool. This is due to Scalex compatibility issues with the Windows 64-bit operating system.
  - **Product Support**  
If you have any questions regarding the Essential Release Information presented, please see the [Product Assistance](#) section for MEP Client Services contact information.

---


# Update Installation Instructions

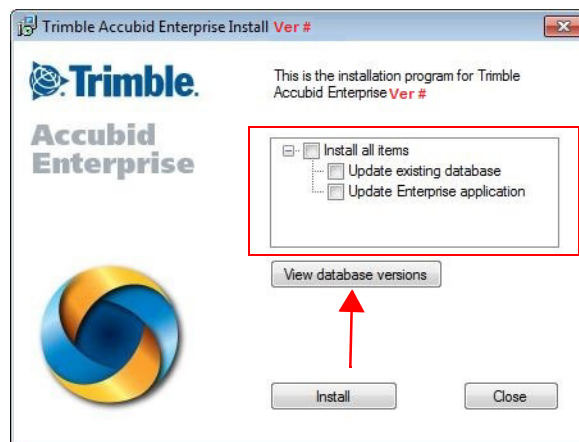
## Installation Procedures

- Depending on the size of your database, this update may take a substantial amount of time to complete (approximately 40 minutes per database). Trimble recommends that you install this update during a non-busy time to avoid work slowdowns/stoppages.
  - If the Enterprise software is installed on a single computer, without a separate server, refer to [Update the Server and SQL Database](#).
  - If you are installing the software on a network, you must also upgrade the Enterprise Clients. Refer to [Updating the individual Enterprise Clients, page 11](#) for detailed instructions.
- All users must be logged out of the Enterprise software until the database upgrade is complete. **Trimble recommends that you do this during a non-busy time or after hours to minimize disruptions in your company's workflow.**

## Update the Server and SQL Database

1. To update the server, run the Enterprise setup on the computer where the application server resides. This is the computer clients connect to when the Enterprise software is opened.
2. The Enterprise install routine automatically detects the versions you can upgrade *from*.

 **Tip** – Upgradable versions of the database can be viewed by clicking on **View database versions**. Refer to the [Essential Release Information](#) for compatible “update from” database versions,

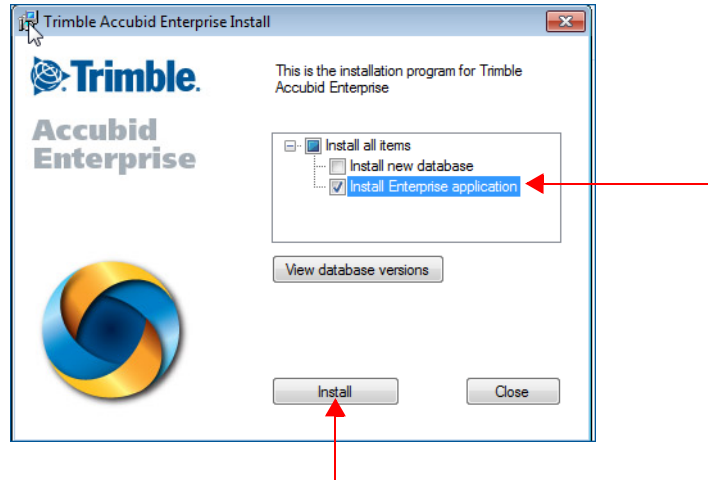


The version number changes from release-to-release.

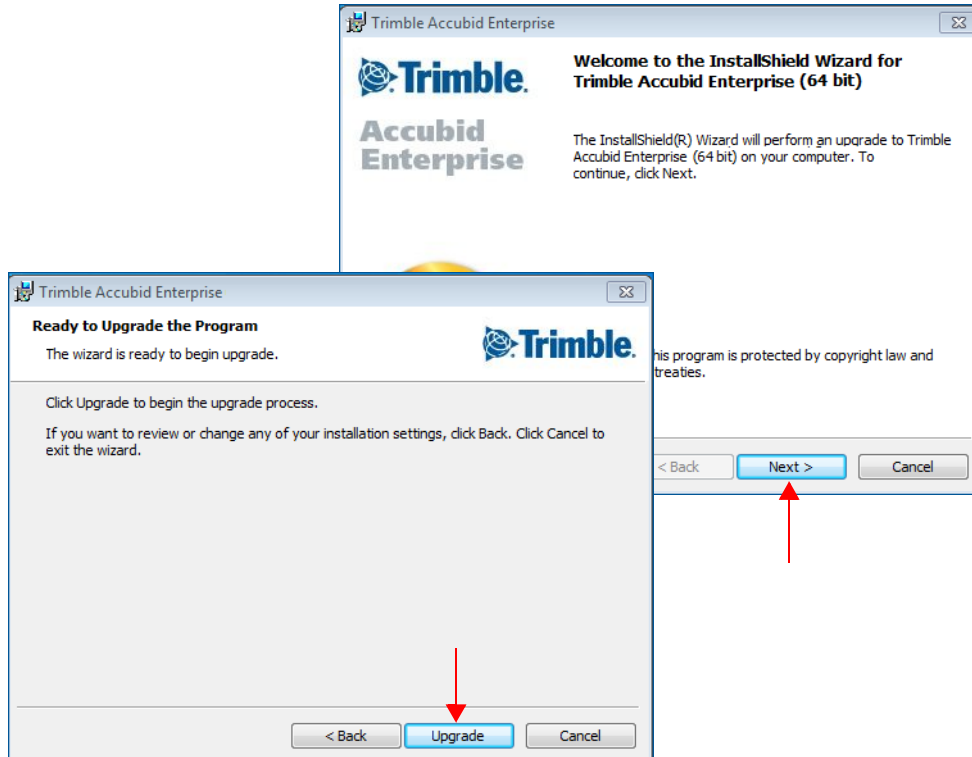
3. Select the **Install all items** checkbox  and then click **Install**.
4. Follow the on-screen prompts to complete the server installation.

## Updating the individual Enterprise Clients

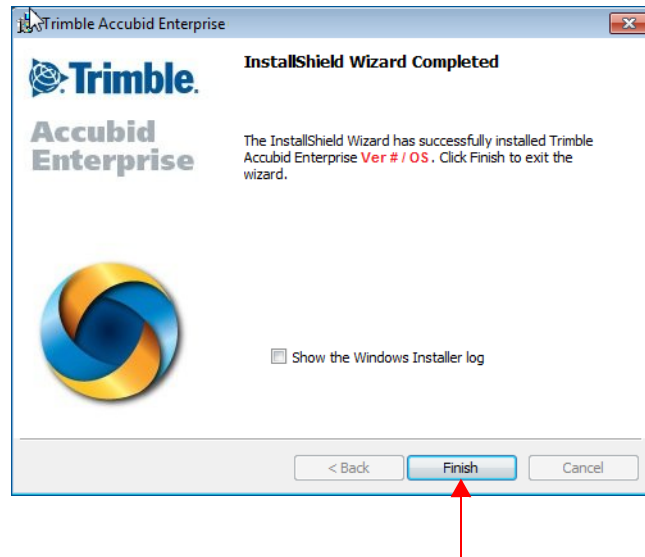
1. To update the client, run the Enterprise setup. Select only the **Update Enterprise application** checkbox .
2. Click **Install**.



3. Click **Next** and then **Upgrade**.



4. The installation routine begins. When the update has been successfully installed, click **Finish** button.



## Final Steps

- Open the Enterprise software using the method you normally do. Provided you followed all instructions in this document, you are now ready to u6.6se this release of the software.
- The online help system contains step-by-step instructions on using many of the features included in this release.

## Add Column to Extension

Update customers may have customized the Extension grid. Because of this, the installation routine does not modify custom layouts. If you wish to show this field in the Extension screen, you can manually add it.

1. Click in the header and then click **Add/Remove Columns**.
2. In the Customizations dialog, click **Labor Cond.** and then drag it to the location in the header where you want it to display.
3. Close the Customization dialog.

---

## Product Assistance

Trimble offers several avenues to obtain help using the Enterprise software program.

### Accessing the Online Help

The online help is easy to use and is accessible through any of the following methods:

- Press the **F1** key at any time while using the program to display help for the current screen or dialog.
- Click **Menu** tab in any screen and then select **Help**. You can scan the Table of Contents, use the Index, or the Search function to find the information you are looking for.
- Use the **Index** tab to locate key words throughout the help system.
- Use the **Search** tab to find specific words used in the help system; for example, you might search for the word delete for instructions on deleting certain data from your system.

### Trimble MEP Client Services

Before calling Client Services, we suggest you consult the online help. Many of the common procedures and questions are covered in this system.

Trimble MEP Client Services is available during regular business hours Monday through Friday.

**Note** – *We are not available on major holidays.*

#### North America

**Toll-free Telephone** 1-800-361-3030

#### Outside North America

**Telephone** 1-905-761-8800

**Internet e-mail** [accubidsupport@trimble.com](mailto:accubidsupport@trimble.com)

**Website** [mep.trimble.com](http://mep.trimble.com)