

6.1.1 RELEASE NOTES

Trimble® Accubid Enterprise Software

- Introduction
- Compatibility/Technical Support
- New Features/Enhancements

Trimble Canada Ltd.
7725 Jane Street
Concord, Ontario L4K 1X4

Copyright and Trademarks

© 2005-2013 Trimble Navigation Limited. All rights reserved.

Trimble and the Globe & Triangle logo are trademarks of Trimble Navigation Limited, registered in the United States and in other countries. Accubid is a trademark of Trimble Navigation Limited registered in the United States and/or in other countries. All other trademarks are the property of their respective owners.

Trimble® Accubid Enterprise and Change Management are trademarks of Trimble Navigation Limited. Other brand and product names are trademarks or registered trademarks of their respective holders.

This publication, or parts thereof, may not be reproduced in any form, by any method, for any purpose, without the written consent of Trimble Navigation Limited.

Release Notice

The topics within this manual are subject to change without written notice. Companies, names, and data used in any examples are fictitious. Screenshots included in the document may not be exactly as in the software application.

Edition

This is the Trimble® Accubid Enterprise Software Release Notes. (Revision A_ENG); Release 6.1.1.

Part Number Enterprise.9050.08.1113_Release Notes
Wednesday, November 13, 2013 9:56 am

Introduction

This document provides basic information about new features, enhancements, and modifications in release 6.1.1 of the Trimble® Accubid Enterprise software. More detailed information can be found in the online help system.

What You Receive With Release 6.1.1

- New/Enhanced features outlined in this document
- Updated online help
- Electronic documentation available on the Trimble Client Portal

Upgrade Procedure

In the installation routine, when you select the *Update database* option, the Enterprise software update installs only program modifications and enhancements. Your existing tables, specifications, and estimates are not impacted in any way.

Compatibility/Technical Support

Operating Systems

This version of the Enterprise software is compatible with 32-bit and 64-bit Windows® Vista®, Windows® 7, and Windows® 8 operating systems. For a more complete listing of Technical Specifications, please go to our website at mep.trimble.com to review the technical specifications for the Enterprise software.

Trimble® PipeDesigner 3D® Integration

The Enterprise software includes the ability to import drawing data from a Trimble® PipeDesigner 3D® drawing. Refer to the online help in each of the software applications for detailed instructions.

Accessing the Online Help

The online help is easy to use and is accessible through any of the following methods:

- Press the [F1] key at any time while using the program to display help for the current screen or dialog.
- Click **Menu** tab in any screen and then select **Help**. You can scan the Table of Contents, use the Index, or the Search functionality to find the information you are looking for.
- Use the **Index** tab to locate key words throughout the help system.

-
- Use the **Search** tab to find specific words used in the help system; for example, you might search for the word delete for instructions on deleting certain data from your system.

Trimble MEP Client Services

Before calling Client Services, we suggest you consult the online help. Many of the common procedures and questions are covered in this system.

Trimble MEP Client Services (Enterprise software) is available between 8:30 a.m. and 8:00 p.m. Eastern Time, Monday through Friday.

Note – *We are not available on major holidays.*

North America

Toll-free Telephone	1-800-361-3030
Toll-free Fax	1-888-363-5466

Outside North America

Telephone	1-905-761-8800
Fax	1-905-761-1234

Internet e-mail

accubidsupport@trimble.com

Website

mep.trimble.com

New Features/Enhancements

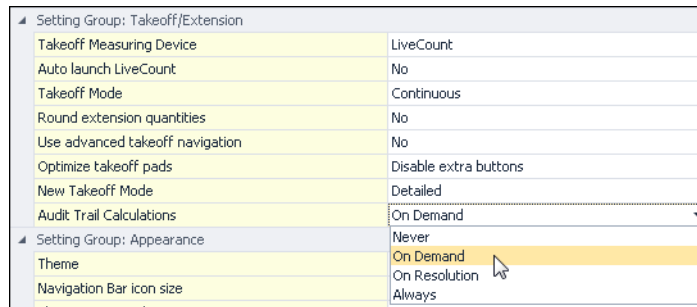
Note – This document lists new features/enhancements/modifications according to the following categories:

- [Enterprise Estimating](#)
Features are applicable to the Estimating module
- [Enterprise Estimating/Enterprise Manager](#)
Features affect both the Estimating and Manager (database) modules
- [Additional Enterprise Software Modifications](#)
Additional features/modifications included in this release.

Enterprise Estimating

Settings / Takeoff

In the Settings Module, a new **On Demand** option for Audit Trail Calculations is available (*Settings / Setting Group / Takeoff/Extension*).



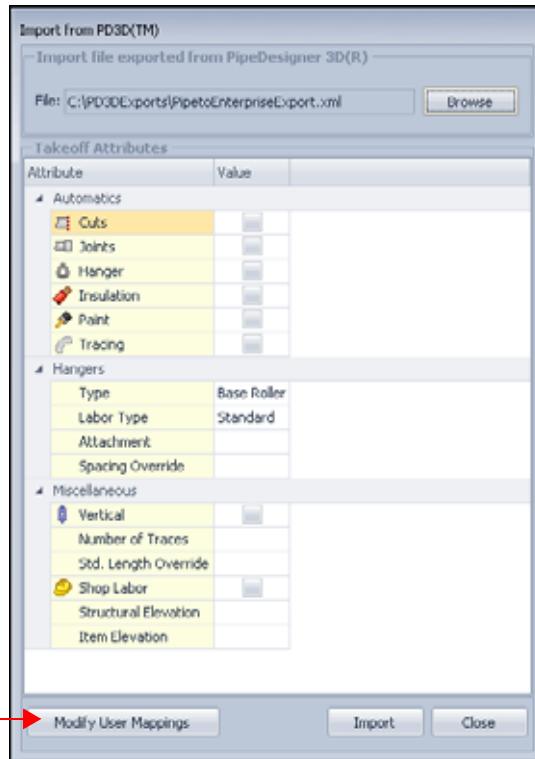
When this option is selected, Material \$ and Labor Hours in the Audit Trail display; however, the values are populated on demand only. When in Takeoff, when you right-click on the Audit Trail and select **Calculate Material and Labor Values** populates the fields with current data.

Note – This setting will not affect current settings. If you wish to use the new setting, you must select it in the Options screen.

Trimble® PipeDesigner 3D® Import Improvements

This release of the Enterprise software includes improvements in the Trimble PipeDesigner 3D import functionality.

B Tip – Before you can use this feature, you must create an export file from the PipeDesigner 3D software.

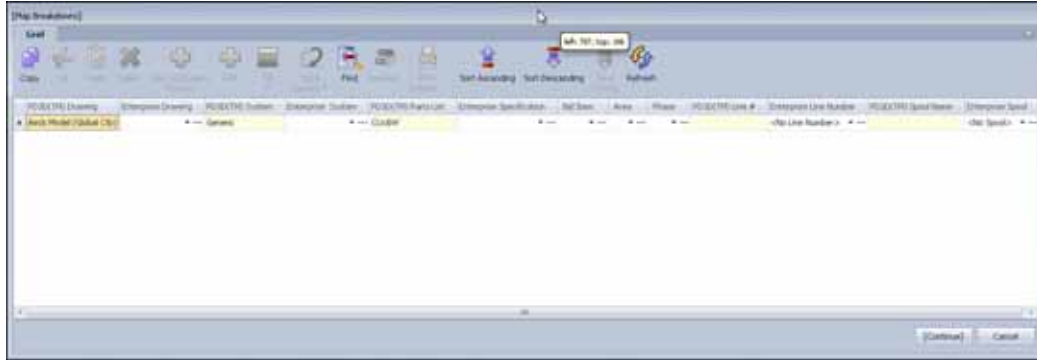


Enhanced features include:

- You can now manage mappings within the Enterprise application by clicking the **Modify User Mappings** button.
 - The PD3D(TM) User Mapping window allows you to view current mappings (as defined in the Enterprise Manager module), if any.
 - You can modify mappings from within the User Mapping window.
 - If mappings do not exist, you must set these after import.

Note – *All mappings are job-specific. Modifying mappings within this window does not affect master mappings set in the Enterprise Manager module.*

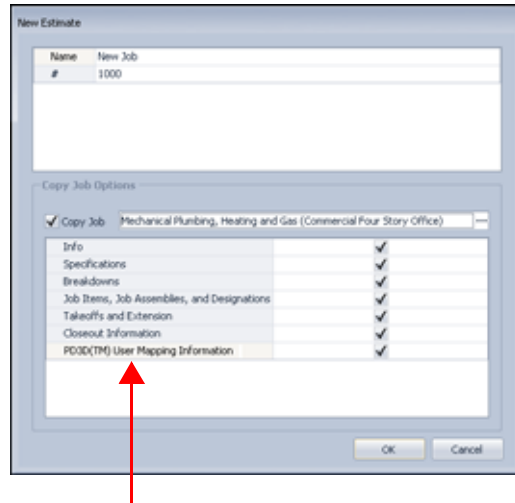
- After processing an import, if the Enterprise software cannot locate mapping (based on the information included in the import file), the Map Breakdowns window opens automatically. This allows you to map items in the drawing to Enterprise software items.



- Additional mapping options are included in this release, for example, Bid Item, Area, Phase, Line number, and Spool.
- You can click ▼ to select an existing field value, or click ... to create a new item/value.

Additional PipeDesigner 3D Modifications

- When creating a new job, you now have the option to copy the PipeDesigner 3D mappings



- In the Enterprise Manager module, you now have the ability to view and modify the PipeDesigner 3D to Enterprise software mappings. This is located under *Application Manager / PD3D(TM) Class Mappings*.

About Trimble® PipeDesigner 3D®

The PipeDesigner 3D software is a three-dimensional piping design software system based on AutoCAD® compatible software. It is designed specifically for mechanical contractors, engineering firms, and manufacturers, who build, fabricate or design piping systems. This 3D piping design software uses Trimble's proprietary Virtual Solids Modeling Engine and is easy for both novice and experienced CAD operators to use.

Contact your Trimble Sales Representative for more information on the PipeDesigner 3D® product.

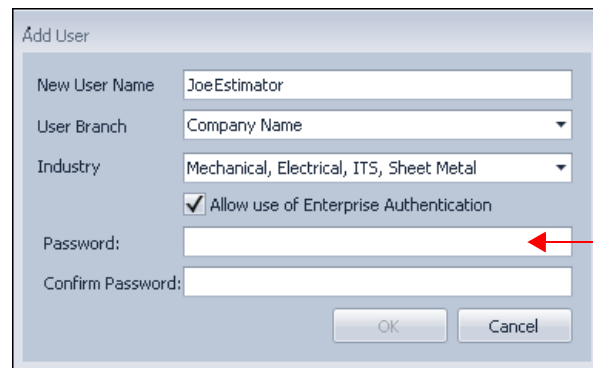
Enterprise Estimating/Enterprise Manager

The modifications listed in this section apply to both to the Enterprise Estimating and Enterprise Manager applications.

Security Manager

You can now use Windows Authentication or Enterprise Authentication when logging into the Enterprise application. This provides access to the application when Windows Authentication is not available. (This might happen if users are sharing a single remote machine for use of the client.)

When you add a new user to the system in the *Enterprise Manager / Security Manager* module, you can select the **Allow use of Enterprise Authentication** checkbox.



The screenshot shows a dialog box titled "Add User" with the following fields and options:

- New User Name: JoeEstimator
- User Branch: Company Name (dropdown menu)
- Industry: Mechanical, Electrical, ITS, Sheet Metal (dropdown menu)
- Allow use of Enterprise Authentication
- Password: (text field with a red arrow pointing to it)
- Confirm Password: (text field)
- Buttons: OK, Cancel

- You must then enter a password. When this user logs into the Enterprise software, the user name and password is required.

- In the Security Manager / Users screen, a selected checkbox displays next to the user's name indicating that Enterprise Authentication is required.

Domain	Enterprise Authentication	User	Industry	Branch Name
AppAuth	<input checked="" type="checkbox"/>	JoeEstimator	Mechanical, Electrical, ITS...	Company Name



Note – *Clearing the checkbox removes the requirement for Enterprise Authentication. The user can then log in using only Windows Authentication.*

When the Application Authentication checkbox is selected, the user must select **Enterprise Authentication** and enter **User Name** and **Password**.

Note – *The first time the user logs in, a prompt displays requiring a password change. The password set when the user is created is temporary. An Enterprise System Administrator can reset the password from within the Security Manager; however this is a temporary password. The user must create a unique password. This prevents unauthorized access to the database by allowing the user to select a password of their choice.*

- If an existing user needs to use *Enterprise Authentication*, an Enterprise system administrator can select the **Enterprise Authentication** checkbox for that user.
 - A temporary password will be created for the user.
 - The next time the user logs into the Enterprise software, *Enterprise Authentication* must be selected; *User Name* and *Password* are required.
 - The user will need to change the temporary password.

Additional Enterprise Software Modifications

- Modifications to formatted text in the Takeoff Pad is retained as expected.
- Vendor Pricing export to Microsoft® Excel® includes the following changes:
 - New column for extended price and total added to the spreadsheet.
 - Total column added next to the unit cost column (to extend out the price) and a total added at the bottom of the spreadsheet (Piping Systems only)
- The Enterprise software does not allow deletion of items that are currently in use. This release of the Enterprise software provides information on where the item is being used within the application.
- Updated Report Templates are now available in Report Center.
- NetPricer™ Service Import now works as expected.