

6.3 RELEASE NOTES

Trimble® Accubid Enterprise Software

- Introduction
- New Features/Enhancements

Toronto Office

Trimble Canada Ltd.
7725 Jane Street, Suite 200
Concord, Ontario L4K 1X4

Copyright and Trademarks

©2005-2014 Trimble Navigation Limited. All rights reserved.

Trimble and the Globe & Triangle logo are trademarks of Trimble Navigation Limited, registered in the United States and in other countries. Accubid is a trademark of Trimble Navigation Limited registered in the United States and/or in other countries. All other trademarks are the property of their respective owners.

Trimble® Accubid Enterprise, Change Management, and LiveCount are trademarks of Trimble Navigation Limited. Other brand and product names are trademarks or registered trademarks of their respective holders.

This publication, or parts thereof, may not be reproduced in any form, by any method, for any purpose, without the written consent of Trimble Navigation Limited.

Release Notice

The topics within this document are:

- Subject to change without written notice.
- Companies, names, and data used in any examples are fictitious.
- Screenshots included in the help topics may not be exactly as in the software application

Edition

This is the Trimble® Accubid Enterprise Software Release Notes. (Revision A_ENG); Release 6.3.

Part Number Enterprise.9050.08.0914_Release Notes
Thursday, September 11, 2014 6:52 am

Introduction


This document provides basic information about new features, enhancements, and modifications in release 6.1 of the Trimble® Accubid Enterprise software. More detailed information can be found in the online help system.

What You Receive With Release 6.3

- New/Enhanced features outlined in this document
- Updated online help
- Electronic documentation (available on the Trimble Client Portal)

Upgrade Procedure

An *Update Installation Instructions* document is available to assist you with installing this update.

 **Tip** – In the installation routine, when you select the *Update database* option, the Enterprise software update installs only program modifications and enhancements. Your existing tables, specifications, and estimates are not impacted in any way.

Compatibility

Operating Systems

This version of the Enterprise software is compatible with 32-bit and 64-bit Windows® 7 and Windows® 8 operating systems. For a more complete listing of Technical Specifications, please go to our website at mep.trimble.com to review the technical specifications for the Enterprise software.

Trimble® Accubid LiveCount™ Compatibility

This release of the Enterprise software is compatible with the Trimble Accubid LiveCount software, release 3.0.6.

Trimble® PipeDesigner 3D® Integration

The Enterprise software includes the ability to import drawing data from a Trimble® PipeDesigner 3D® drawing. Refer to the online help in each of the software applications for detailed instructions.

Hard Dollar Integration

The Enterprise software includes a seamless integration with the Hard Dollar software. This is accomplished through a web service; nothing is required within the Enterprise software. Data is automatically passed to the Hard Dollar database.

Product Assistance

Trimble offers several avenues to obtain help using the Enterprise software program.

Accessing the Online Help

The online help is easy to use and is accessible through any of the following methods:

- Press the **F1** key at any time while using the program to display help for the current screen or dialog.
- Click **Menu** tab in any screen and then select **Help**. You can scan the Table of Contents, use the Index, or the Search functionality to find the information you are looking for.
- Use the **Index** tab to locate key words throughout the help system.
- Use the **Search** tab to find specific words used in the help system; for example, you might search for the word delete for instructions on deleting certain data from your system.

Trimble MEP Client Services

Before calling Client Services, we suggest you consult the online help. Many of the common procedures and questions are covered in this system.

Trimble MEP Client Services (Enterprise software) is available during regular business hours Monday through Friday.

Note – *We are not available on major holidays.*

North America

Toll-free Telephone 1-800-361-3030

Outside North America

Telephone 1-905-761-8800

Internet e-mail accubidsupport@trimble.com

Website mep.trimble.com

New Features/Enhancements

Note – This document lists new features/enhancements/modifications according to the following categories:

- [Enterprise Manager](#)
Features affect the Manager module (database, security, and so on).
- [Enterprise Estimating](#)
Features are applicable to the Estimating modules

Enterprise Manager

Modifications and Enhancements listed in this section apply to the Enterprise Manager application.

Database Manager

Assembly Editor

You now have the ability to sort Attribute Combinations in the Assembly Editor screen. After you've added a new combination, sorting allows you to easily locate attributes you want to view.

Assembly Parts	Attribute Combinations
	Attribute Combinations
1	1" - 3 #6 w/ #10 Gnd
2	1" - 4 #6 w/ #10 Gnd
3	1-1/2" - 3 #1/0 w/ #6 Gnd
4	1-1/2" - 4 #1/0 w/ #6 Gnd
5	1-1/4" - 3 #3 w/ #8 Gnd
6	1-1/4" - 4 #3 w/ #8 Gnd
7	2" - 3 #3/0 w/ #6 Gnd
8	2" - 4 #3/0 w/ #6 Gnd
9	2-1/2" - 3 #4/0 w/ #4 Gnd
10	2-1/2" - 4 #4/0 w/ #4 Gnd
11	3" - 3 #350 w/ #4 Gnd
12	3" - 4 #350 w/ #4 Gnd
13	4" - 3 #600 w/ #3 Gnd
14	4" - 4 #600 w/ #3 Gnd

Click in the column header to sort ascending or descending.

OR


You can right-click on the header and then click **Sort Ascending** or **Sort Descending**.

An arrow displays indicating the sort type.

Custom Takeoff Attributes

The release of the Enterprise software offers the ability to create custom takeoff attributes (under Selection Lists). This provides more flexibility by allowing you to create additional attributes for use in Takeoff.

When you create a new attribute, you must also select the industry where you will be using it, as well as the icon you wish to use with the attribute (A through Z). In Takeoff, the custom attributes display in the Attributes pane under *Automatics*.

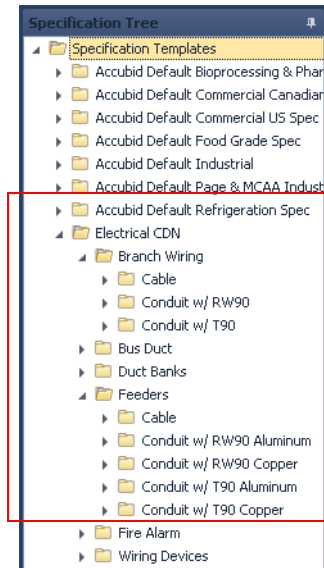
 **Tip** – When selecting a custom attribute in takeoff, the same features as the default attributes are available, such as filtering.

Application Manager

Specification Setup

- **Copy Specifications**

When you copy a specification folder, all child folders assigned will also be copied. This allows you to update existing folders or remove folders no longer required in the copied specification.



- **Parent Folders**
A parent folder will include child folders.
- **Child Folders**
A child folder resides within parent folders.

- **Copy/Paste Functionality**

You can now copy and paste a specification folder to the main Specification Template folder. This functionality was previously disabled.

Enterprise Estimating

Takeoff

Typical Takeoffs

- This release of the Enterprise software allows you to enter up to 999 Typical Takeoff definitions. This provides you with more flexibility when working on a project with many similar areas, for example, a hotel or hospital.
- Deleting Typical Takeoffs when estimates are copied from one to another now works as expected.

Note – Before you copy the estimate, you must clear the Takeoffs and Extensions checkboxes. If these checkboxes are selected, you will be unable to delete the Typical Takeoffs due to data dependencies.

Assembly Quantities

This release of the Enterprise software allows input of unlimited assembly quantities. You will find this beneficial when you are taking off large measurements requiring substantial quantities (for example, wire).

Breakdowns

- **Drawings**
 - The *Drawing Rev. #* field in the Drawing Definition screen now allows alpha-numeric input.
 - A new Sheet Number column field has been added to the Drawing Definition screen.

Filter	Description	Field Labor Factor	Shop Labor Factor	Unit	Code	Sheet Number	Rev. #	Notes
▼	Drawing 1	1.000	1.000			100	Rev2	
▼	Drawing 2	1.000	1.000			200	Rev1	

Rod Length

Rod Length is now calculated based on the absolute difference between *Structural Elevation* and *Item Elevation* (resulting in no negative values).

Note – If no values are entered in the elevation fields, the Rod Length will be rely on settings in the assigned specification.

Miscellaneous			
Vertical			▼
Std. Length Override			
Shop Labor			▼
Structural Elevation			
Item Elevation			

Assembly Takeoff

When you takeoff a global assembly, then modify parts/quantity, the copy and paste resulting paste now displays the data based on the modifications entered.


Delete Multiple Takeoff Procedure

Deleting multiple takeoffs, while the *Hide Deleted Takeoff* option is selected, now works as expected. The procedure deletes only those lines selected and no longer deletes any alternate takeoffs.

Extension

Field Labor - Labor Adjustment Percentage

A new column has been added to the Extension screen that allows you to adjust Field Labor by a percentage value.



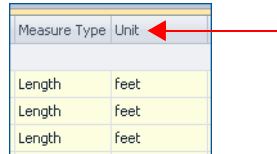
Field Labor	Shop Labor	Labor U	Field Labor Adj %	Total Field Labor
0.000		E		
		E		
		E		
7.200		M	10.000	196.020
7.200		M		6,973,920

- The Unit Price view (under *Group*) will not show this adjustment.
- The resulting value displays in the *Total Field Labor* column (with the percentage adjustment taken into consideration).
- Pinning the field labor field has no effect on the total field hours calculated. The adjustment percentage is applied to the total field labor hours.

Note – In *Labor Type* view and in *Designations*, this column is read only. No changes are allowed.

Vendor Pricing

- A new *Vendor Pricing Unit* field has been added to the specific *Vendor Pricing / Pricing [tab]* dialog.



Measure Type	Unit
Length	feet
Length	feet
Length	feet

This field contains the unit of measurement assigned to your project. When you export the Pricing tab information to Microsoft® Excel®, the project unit of measurement is also included. This provides the vendor additional information that enhances the accuracy of the quote.

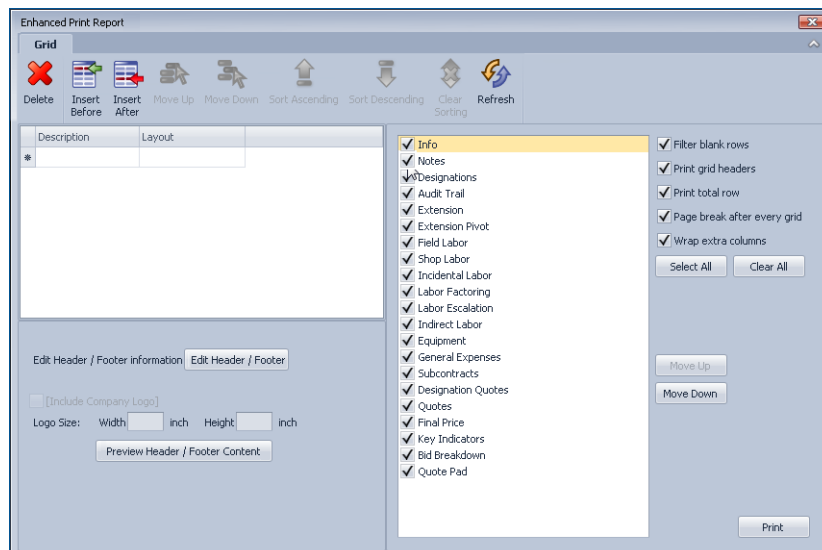
- You can now enter negative values in Vendor quotes.

Cost Codes

If a Cost Code entered is currently in use for another industry, the Enterprise software will now ask if you want to add the industry to the Cost Code you want to use. This allows you to use the same cost codes in all projects for reporting purposes.

Quick Reports (Print Screen)

The Quick Reports option (*Grid / Print Screen*) available in most windows now allows you to include a header/footer, as well as your company logo. This provides reports personalized to your company.



Additional features include:

- You can create a report and save the template (under Description/Layout). This report is available for use by other users in the system.

-
- You can select the tabs you want included in your report, as well as change the order (using the *Move Up* or *Move Down* buttons).
 - You can also select various options on how your report prints.

Extension

- **Description Modifications**
You can now edit the Takeoff Description in the Extension screen when the screen is grouped by Unit Price. When you make a change to the item name, the name will change everywhere in your job.

Note – *You cannot change the name of a Designation using this method.*

Files and Links

Under the *View* menu, when you click *Files and Links*, the proper window label now displays.

Closeout

- **Subcontracts/Quotes**
You can now add negative values to the *Subcontracts* and *Quotes* screens in the Closeout. This allows more flexibility in applying credits to your estimates.
- When multiple estimates for different projects are open, the Bid Summary now list now displays the proper summary options based on the current project selected.
- **Markup on Overhead**
When you turn off Markup and Overhead in the Estimate Info screen, the resulting calculations now work as expected.