

# 2015 v2 RELEASE NOTES

## **Trimble® PipeDesigner 3D® Software**

- Introduction
- Compatibility
- New Features/Enhancements

Trimble Navigation Limited  
116 Inverness Drive East, Suite 210  
Englewood, Colorado 80112  
800-234-3758

## **Legal Notices**

### **Copyright and Trademarks**

©1999-2014 Trimble Navigation Limited. All rights reserved.

Trimble and the Globe & Triangle logo are trademarks of Trimble Navigation Limited, registered in the United States and in other countries. PipeDesigner 3D and Trimble Quick Link are trademarks of Trimble Navigation Limited. Other brand and product names are trademarks or registered trademarks of their respective holders.

This publication, or parts thereof, may not be reproduced in any form, by any method, for any purpose, without the written consent of Trimble Navigation Limited.

### **Release Notice**

This is the Trimble PipeDesigner 3D Software Release Notes (Revision A). It pertains to release 2015 v2 of the software.

The topics within this document are:

- Subject to change without written notice.
- Companies, names, and data used in any examples are fictitious.
- Screenshots included in the help topics may not be exactly as in the software application.

### **Edition**

Trimble® PipeDesigner 3D Release Notes, Release 2015 v2

Part # PD3D8059.08.1214\_Release Notes 2015 v2  
Wednesday, December 03, 2014 7:32 am

---

## Introduction

This document provides basic information about new features and modifications in release 2015 v2 of the Trimble® PipeDesigner 3D® software. More detailed information can be found in the online help system.

### What You Receive With Release 2015 v2

- One Trimble PipeDesigner 3D Installation DVD
- One Trimble PipeDesigner 3D *Let's Get Started* foldout

### Upgrade Procedure

Please refer to the Trimble PipeDesigner 3D *Update Installation Instructions* document on the installation DVD for information on installation requirements. Trimble recommends that you print this document to help ensure proper operation of the software application after installation.

### Trimble® Quick Link

The PipeDesigner 3D software includes an interface with the Trimble® Quick Link licensing and communication system.

**Note** – *You must install the updated Quick Link software (included on the installation disk) in order to maintain continued licensing of your product. Refer to the Update Installation Instructions document (also included on the disk).*

### Manufacturers' Databases

Trimble provides various manufacturers' databases that you can add to the PipeDesigner 3D software using the QuickMerge utility. All available manufacturers' databases, as well as instructions for merging into the PipeDesigner 3D database, are available for download from our website.

<http://mep.trimble.com/support/resources/manufacturer-libraries>

## Compatibility

### Autodesk® Software

This release of PipeDesigner 3D software is compatible with:

- AutoCAD® 2015
- AutoCAD® Architecture 2015
- AutoCAD® MEP 2015

It will not work with any other version of these applications.

---

## Operating Systems

This version of the PipeDesigner 3D software is compatible with 32-bit and 64-bit Windows® 7 and Windows® 8 operating systems.

**Note** – *Your version of AutoCAD must correspond with the proper version of the PipeDesigner 3D software, as well as the operating system.*

## Trimble® Field Link for MEP

Trimble Field Link for MEP allows you to easily manage layout tasks by employing a task-based workflow featuring advanced Layout, Reporting, and Model Viewer functionality.

## Trimble® MEP Integration

With the Trimble MEP layout solution, mechanical, electrical, and plumbing contractors can increase productivity and simplify the layout of sleeves and hangers.

## Trimble MEP Estimating Software Integration

The PipeDesigner 3D software includes the ability to export data in a format for import into the following Trimble MEP estimating software applications:

- Trimble® AutoBid® Mechanical software
- Trimble® Accubid Enterprise software

Refer to the online help in each of the software applications for detailed instructions.

---

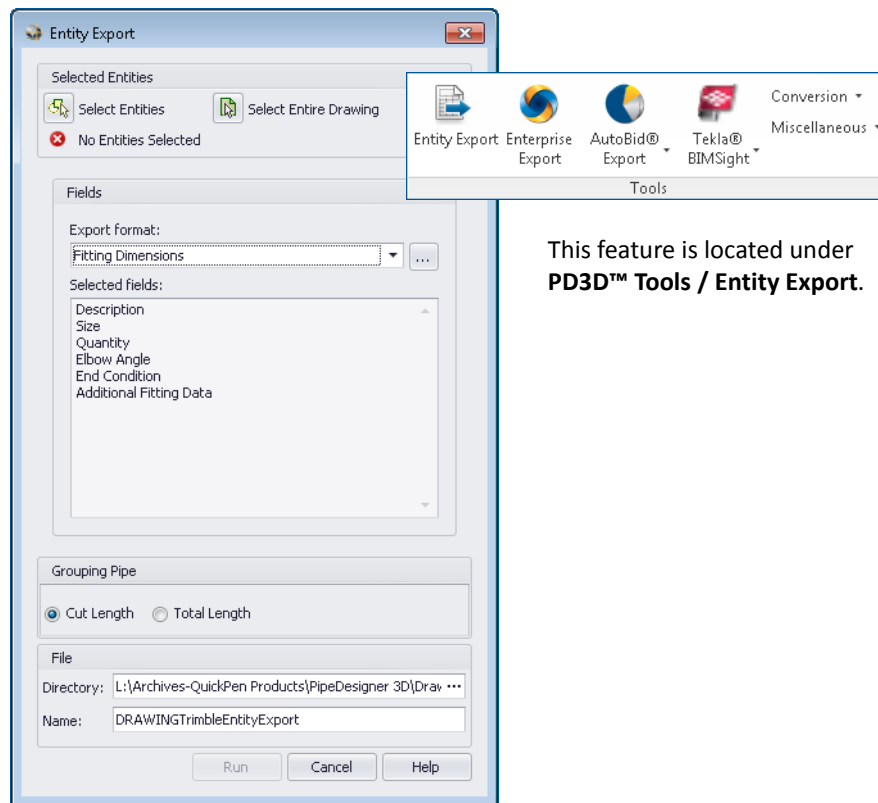
## New Features/Enhancements

The following enhancements have been added to the PipeDesigner 3D software in this release.

### PipeDesigner 3D CAD

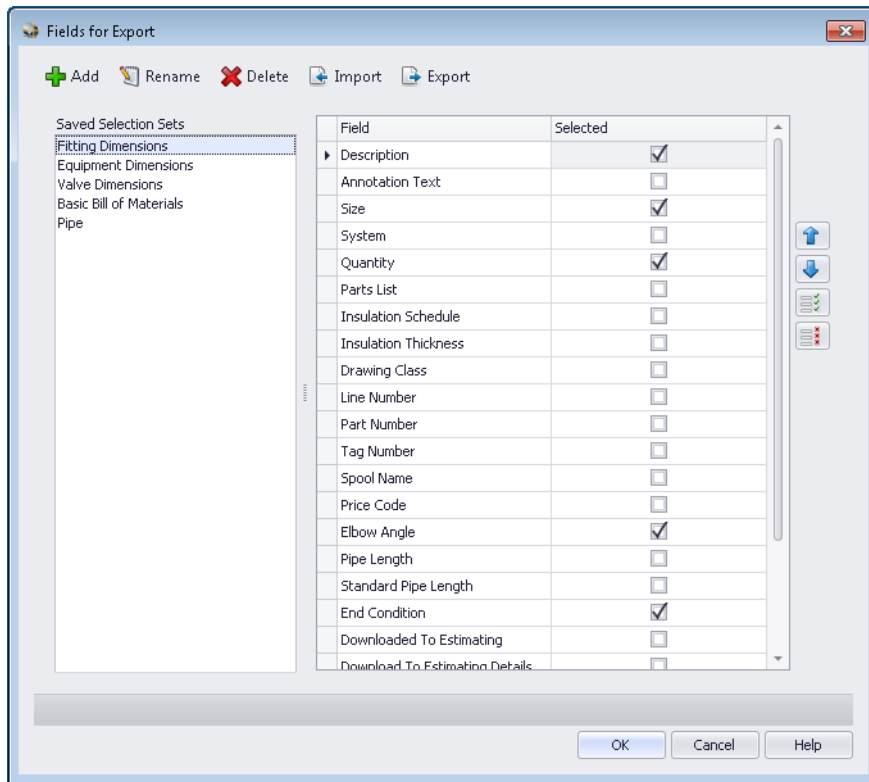
#### Entity Export

The Entity Export procedure allows you to select specific entities in your drawing and export them to a CSV file that can be opened in Microsoft® Excel®. Because you might have definitive requirements for reporting, this feature allows you to choose data, create your own report, and then format it as desired.



This feature is located under  
**PD3D™ Tools / Entity Export.**

In the Export format pane, you can click ▼ to use one of the Trimble defined formats or click ... to open the Fields for Export dialog. This dialog allows you to further define the data exported. After you have exported the data, you can save it for use/reporting at a later time.

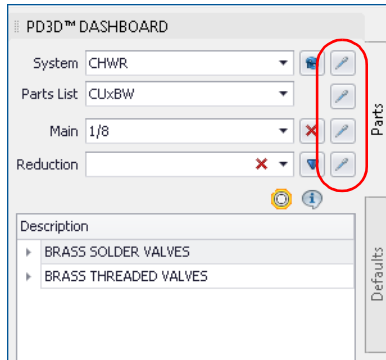


- You can choose the fields and field order included in the export file.
- You can create named sets for exports that you will be doing on a regular basis.
- You can export and import field sets from other projects. This saves you time because you do not have to recreate these repeatedly.
- Objects that exactly match are combined, providing a single count of those items. This streamlines your report by listing the like items together, instead of separate counts.
- You can also group similar pipe to provide a total length or counts of individual lengths of pipe.

---

## Match Buttons

This release of the PipeDesigner 3D software includes functionality allowing you to match settings to a selected item. You can use this feature when attaching fittings or placing branches to ensure the appropriate system, part list, and size are used. The match buttons are located on the PD3D™ Dashboard next to each associated field.

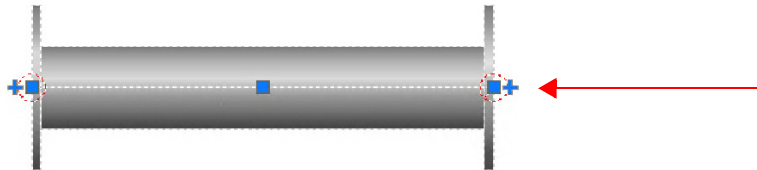


When you click on a match button, you are prompted at the Command Line to specify the object. You can click on the item in the drawing and all settings change based on your selection.

This feature will help eliminate placing items with incorrect settings.

## Plus Grip

In this release of PipeDesigner 3D, a plus grip is available on each opening of all pipe/fittings. When you select this grip, a new Route Line is started at the connection of that opening.



## Annotation Import Settings

This release of PipeDesigner 3D includes functionality that allows you to import annotation settings from another drawing.

- This command is located on **PD3D™ Annotations** tab.
- Go to the **Annotate** group and then click **Import**.
- When you click on the panel and then Import, you can select the drawing with the settings you want to import into your current drawing.

---

## Additional Modifications

- **Spool Manager**
  - Multiple spools can now be opened at the same time.
  - Spool BOM settings are now consistently retained between spools.
- **BOM**

The Regenerate and Refresh commands have been improved.
- **Connectivity**

Items retain connectivity on a persistent basis (as expected).
- **Hanger Points**
  - Hanger point numbering will adjust incrementally between separate piping runs.
  - Hanger points are now placed on piping runs between two tees.
- **Field Points**

To allow for a more generic drawing format, field points are no longer included in Client Export drawings.
- **Sloped Runs**

Fittings inserted on sloped lines have been enhanced.

## Data Modifications

The following modification was made to the PipeDesigner 3D database (PipeDesigner 3D Data Editor).

**BUSHING, 4718 SPGXSLIP CPVC-CTS NIBCO**

The data associated with Opening 1 and Opening 2 is now correct in the database. (The opening sizes were previously reversed.)

If you choose to add these changes to your PipeDesigner 3D database, refer to the Final Steps in the *Update Installation Instructions* document for detailed procedures.