

2013 v3 RELEASE NOTES

Trimble® QuickPen PipeDesigner 3D® Software

- Introduction
- Compatibility
- New Features/Enhancements

Trimble Navigation Limited
384 Inverness Parkway, Suite 200
Englewood, Colorado 80112
800-234-3758

Legal Notices

Copyright and Trademarks

©1998-2013 Trimble Navigation Limited. All rights reserved.

Trimble and the Globe & Triangle logo are trademarks of Trimble Navigation Limited, registered in the United States and in other countries. QuickPen and PipeDesigner 3D are trademarks of Trimble Navigation Limited. Other brand and product names are trademarks or registered trademarks of their respective holders.

This publication, or parts thereof, may not be reproduced in any form, by any method, for any purpose, without the written consent of Trimble Navigation Limited.

Release Notice

This is the Trimble QuickPen PipeDesigner 3D Release Notes (Revision A). It applies to release 2013 v3 of the software.

The topics within this document are subject to change without written notice. Companies, names, and data used in any examples are fictitious. Screenshots included in the topics may not be exactly as in the software application.

Edition

Trimble® QuickPen PipeDesigner 3D Release Notes
Part # PD3D8059.08.0113_Release Notes 2013.3

Thursday, February 21, 2013 2:44 pm

Introduction

This document provides basic information about new features and modifications in release 2013 v3 of the Trimble® QuickPen PipeDesigner 3D® software. More detailed information can be found in the online help system.

What You Receive With Release 2013 v3

- One Trimble QuickPen PipeDesigner 3D Installation DVD
- One PipeDesigner 3D *Let's Get Started* foldout
- One *Introduction to Trimble® Quick Link* flyer

Upgrade Procedure

Please refer to the PipeDesigner 3D *Update Installation Instructions* document on the installation DVD for information on installation requirements. Trimble recommends that you print this document to help ensure proper operation of the software application after installation.

Trimble® Quick Link

The PipeDesigner 3D software includes an interface with the Trimble Quick Link licensing and communication system.

Note – *You must install the updated Quick Link software included on the DVD in order to maintain continued licensing of your product. Refer to the Update Installation Instructions document (also included on the DVD).*

Manufacturers' Databases

Trimble provides various manufacturers' databases that you can add to the PipeDesigner 3D software using the QuickMerge utility. All available manufacturers' databases are included on the PipeDesigner 3D installation DVD. Refer to the QuickMerge topic in the Data Editor help file for detailed instructions on adding these databases to the PipeDesigner 3D system.

Compatibility

Autodesk® Software

This release of PipeDesigner 3D software is compatible with:

- AutoCAD® 2013
- AutoCAD® Architecture 2013
- AutoCAD® MEP 2013

It will not work with any other version of these applications.

Operating Systems

This version of the PipeDesigner 3D software is compatible with 32-bit and 64-bit Windows XP, Windows Vista, and Windows 7 operating systems. Your version of AutoCAD MEP must correspond with the proper version of the PipeDesigner 3D software, as well as the operating system.

Trimble® Field Link for MEP

Trimble Field Link for MEP allows you to easily manage layout tasks by employing a task-based workflow featuring advanced Layout, Reporting, and Model Viewer functionality.

Trimble® MEP Integration

With the Trimble MEP layout solution, mechanical, electrical, and plumbing contractors can increase productivity and simplify the layout of sleeves and hangers.

AutoBid® Mechanical Integration

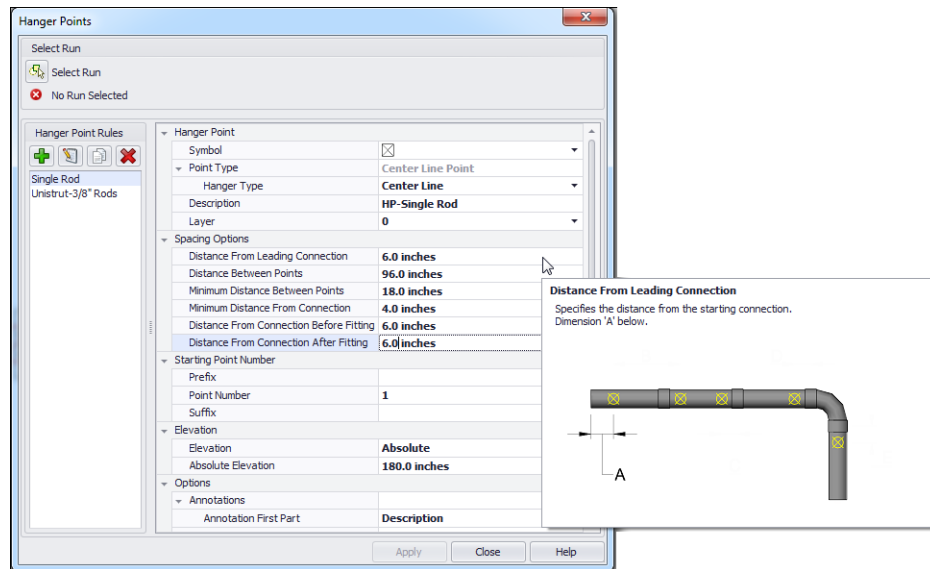
The PipeDesigner 3D software includes the ability to export data in a format that can easily be imported into the AutoBid Mechanical database. Refer to the online help in each of the software applications for detailed instructions.

New Features/Enhancements

The following enhancements have been added to the PipeDesigner 3D software in this release:

Hanger Points

Hanger Points can now be automatically generated based on parameters you define. Multiple rules can be defined for hanger spacing, customization of layer type, elevation, single or double hangers, vertical runs, and hanger symbol.

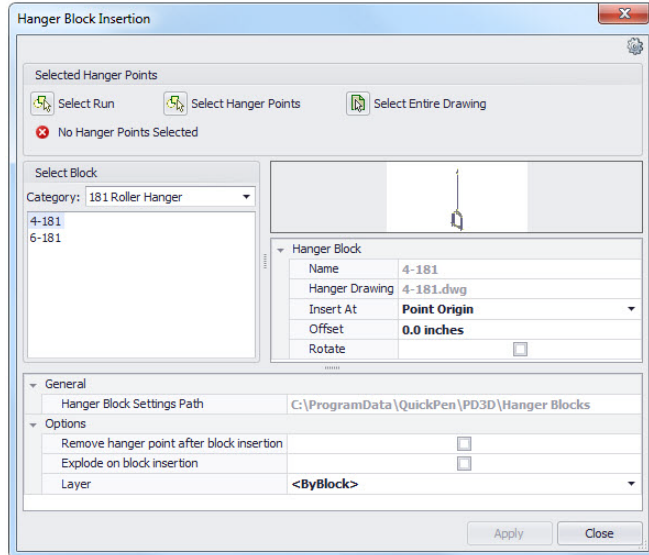


Additional hanger settings can be defined in this module also. See the online help system for more details.

Once hangers have been placed, they can be copied, moved, and modified when required.

Hangar Blocks

You can now insert hangar blocks into Hangar Point Positions. This command is under **PD3D™ Tools / Field Points / Insert Hangar Blocks**.



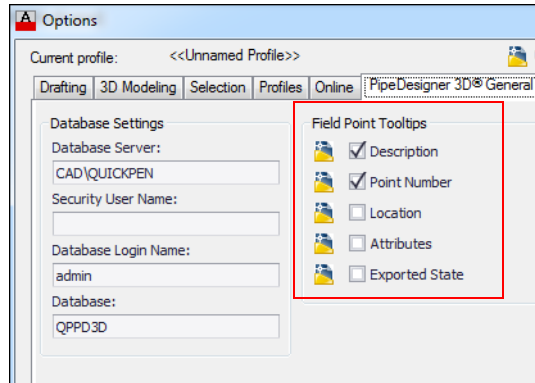
This feature allows you to add hanger blocks to specific hanger points in your drawing. These blocks are included in your field point export.

Note – *The PipeDesigner 3D block library includes several default hanger blocks that you can insert into your drawing. You can also easily create new hanger blocks that will also be available for selection in the Hanger Block Insertion window.*

Field Points

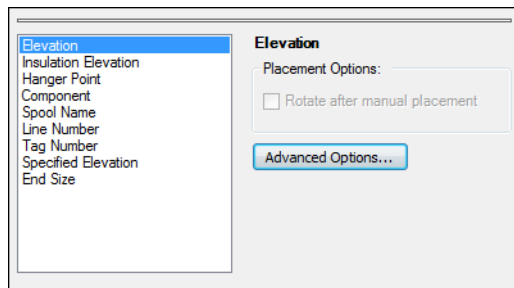
- When you create a field point, the PipeDesigner 3D software retains the information for the last point you created. This allows you to quickly place additional points in your drawing.
- The Field Points exports now allow you to overwrite an existing export file. It no longer requires a new file for each export (instead of incrementing the file name by one character). This creates fewer files to keep your export more organized.
- Routing points are now placed at the center of an elbow (rather than one at each opening).

- Field Point Tooltips are now available. When you hover your mouse over a point, information pertaining to the point displays on-screen. These settings are available under AutoCAD **Options / PipeDesigner 3D General**.



Annotation Controls

The PipeDesigner 3D software now allows you to have more control over annotations.



When you click on an option in the left pane and then go to *Advanced Options*, you can define annotation behavior for the selection. This includes overriding the annotation layer settings in the PipeDesigner 3D® Data Editor.

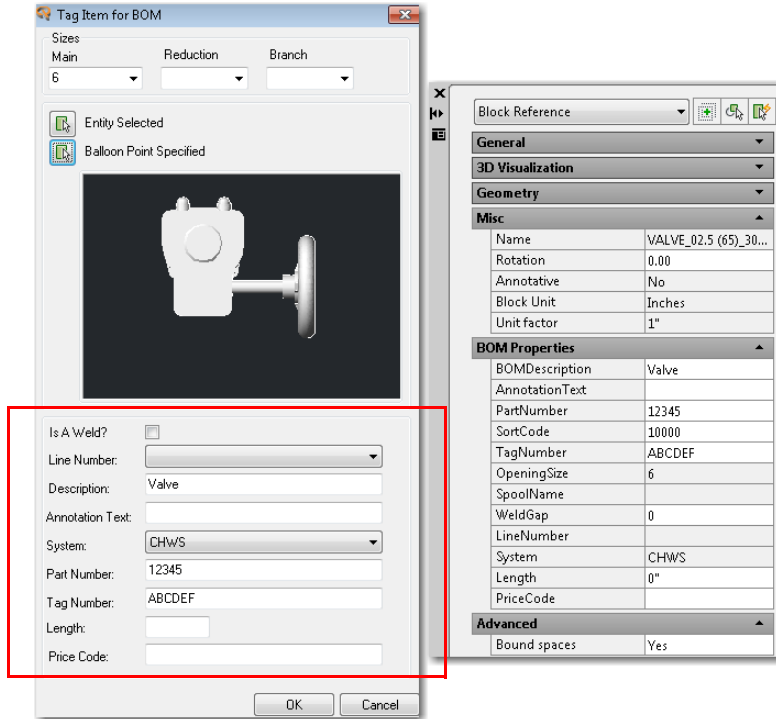
The settings for this feature are under *Options / PipeDesigner 3D Annotation*

Price Codes

Price codes set in the PipeDesigner 3D Data Editor pull through to the CAD-side of the software. Price Codes are displayed in the Part Query, reports, and are included in exports. These codes can be included in the BOM.

Tag for BOM Attributes

You are now able to view the Tag for BOM Attributes in the Part Query and the Properties window. These were previously only viewable after the BOM was created.



AutoBid® Export/Import Centerline

The PipeDesigner 3D software now allows you to import centerline of pipe and branches created in the AutoBid® Mechanical software (On-Screen View TakeOff and Graphical View TakeOff).

Note – This feature will be available in Release 2013 v1 of AutoBid Mechanical in On-Screen View TakeOff, Graphical View TakeOff, and Audit Trail View TakeOff (under the File menu).

Automatic Reconnection of Pipe

In this release of the PipeDesigner 3D software, when you remove a tee, valve, or other item from the middle of a run of pipe, the software will attempt to connect the pipe back together.

Coupling Insulation

The PipeDesigner 3D software now includes insulation for coupling3.

Insulation Graphics

Insulation graphics are now handled more efficiently on smaller graphics and connectors.

Tekla® BIMsight / Tekla® Structures / IFC

- When you create an export, the PipeDesigner 3D software retains the information for the last export you created. This allows you to quickly re-export whenever necessary.
- The export now allows you to overwrite an existing export file. It no longer requires a new file for each export (instead of incrementing the file name by one character). This creates fewer files to keep your export more organized.

Steel

The PipeDesigner 3D software defaults to the last type and size of steel drawn previously. This eliminates the need to define it every time you use it in your drawing.

Additional Modifications

- Editing a mark in the BOM table now updates the balloon.
- Autorouting is now available for combo wyes