

2014 v2 RELEASE NOTES

Trimble® PipeDesigner 3D® Software

- Introduction
- Compatibility
- New Features/Enhancements

Trimble Navigation Limited
116 Inverness Drive East, Suite 210
Englewood, Colorado 80112
800-234-3758

Legal Notices

Copyright and Trademarks

©1999-2013 Trimble Navigation Limited. All rights reserved.

Trimble and the Globe & Triangle logo are trademarks of Trimble Navigation Limited, registered in the United States and in other countries. PipeDesigner 3D and Trimble Quick Link are trademarks of Trimble Navigation Limited. Other brand and product names are trademarks or registered trademarks of their respective holders.

This publication, or parts thereof, may not be reproduced in any form, by any method, for any purpose, without the written consent of Trimble Navigation Limited.

Release Notice

This is the Trimble PipeDesigner 3D Software Release Notes (Revision A). It pertains to release 2014 v2 of the software.

The topics within this document are subject to change without written notice. Companies, names, and data used in any examples are fictitious. Screenshots included in this document may not be exactly as in the software application.

Edition

Trimble® PipeDesigner 3D Release Notes
Part # PD3D8059.08.1013_Release Notes 2014 v2

Tuesday, December 17, 2013 12:54 pm

Introduction

This document provides basic information about new features and modifications in release 2014 v2 of the Trimble® PipeDesigner 3D® software. More detailed information can be found in the online help system.

What You Receive With Release 2014 v2

- One Trimble PipeDesigner 3D Installation DVD
- One Trimble PipeDesigner 3D *Let's Get Started* foldout

Upgrade Procedure

Please refer to the Trimble PipeDesigner 3D *Update Installation Instructions* document on the installation DVD for information on installation requirements. Trimble recommends that you print this document to help ensure proper operation of the software application after installation.

Trimble® Quick Link

The PipeDesigner 3D software includes an interface with the Trimble® Quick Link licensing and communication system.

Note – *You must install the updated Quick Link software (included on the installation disk) in order to maintain continued licensing of your product. Refer to the Update Installation Instructions document (also included on the disk).*

Manufacturers' Databases

Trimble provides various manufacturers' databases that you can add to the PipeDesigner 3D software using the QuickMerge utility. All available manufacturers' databases, as well as instructions for merging into the PipeDesigner 3D database, are available for download from our website.

<http://mep.trimble.com/support/downloads>

Compatibility

Autodesk® Software

This release of PipeDesigner 3D software is compatible with:

- AutoCAD® 2014
- AutoCAD® Architecture 2014
- AutoCAD® MEP 2014

It will not work with any other version of these applications.

Operating Systems

This version of the PipeDesigner 3D software is compatible with 32-bit and 64-bit Windows® 7, and Windows® 8 operating systems.

Note – *Your version of AutoCAD must correspond with the proper version of the PipeDesigner 3D software, as well as the operating system.*

Trimble® Field Link for MEP

Trimble Field Link for MEP allows you to easily manage layout tasks by employing a task-based workflow featuring advanced Layout, Reporting, and Model Viewer functionality.

Trimble® MEP Integration

With the Trimble MEP layout solution, mechanical, electrical, and plumbing contractors can increase productivity and simplify the layout of sleeves and hangers.

Trimble Estimating Software Integration

The PipeDesigner 3D software includes the ability to export data in a format for import into the following Trimble estimating software applications:

- Trimble® AutoBid® Mechanical software
- Trimble® Accubid Enterprise software

Refer to the online help in each of the software applications for detailed instructions.

New Features/Enhancements

The following enhancements have been added to the PipeDesigner 3D software in this release:

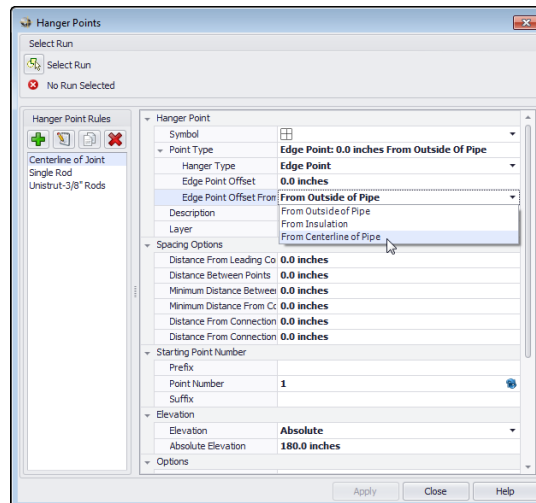
PipeDesigner 3D CAD

Faster Processing

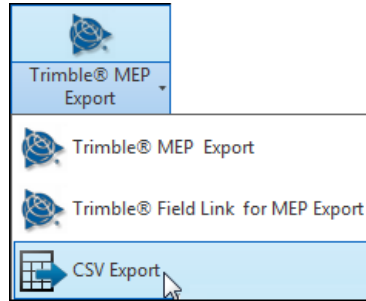
Performance enhancements have been included in this release. This primarily affects specifying selection sets that include PipeDesigner 3D objects.

Field Points

- **Custom Points**
You can now insert Custom Points in any view. This modification makes it easier to insert points at Sleeve openings in walls and for other similar situations. The points are oriented in plan view.
- **New Hanger Point Option**
A new Hanger Point option is included in this version of the PipeDesigner 3D software. This option allows you to offset from centerline instead of from the edge of pipe or insulation.



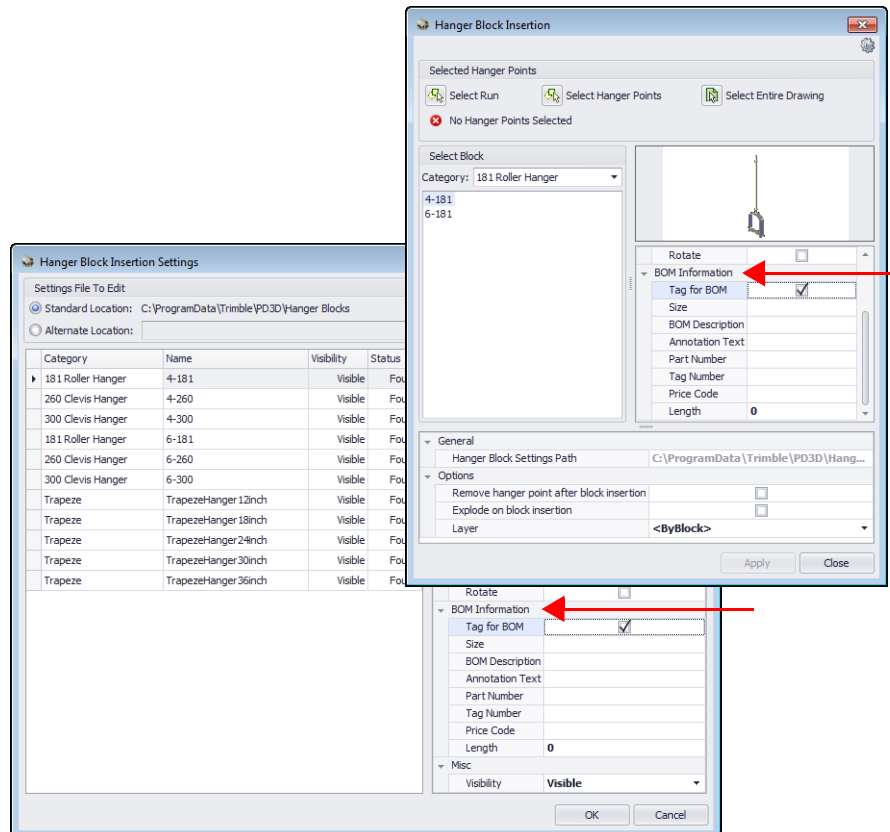
- **CSV Export**



This export allows you to create an export file that can be imported into various field points software programs. **Note:** While you can use this export option to create a file that can be imported into Trimble® MEP and Trimble® Field Link for MEP, this file does not include data specific to these field points programs. If you are going to import data into a Trimble program, we recommend you use the Trimble® MEP or Trimble® Field Link for MEP export procedures. These processes export and import data specific to the Trimble field points programs.

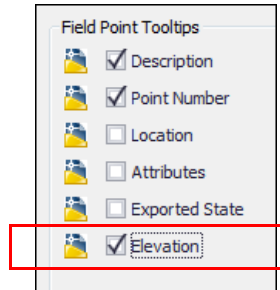
- **Hanger Blocks: BOM Settings**

BOM Information settings have been added to the Hanger Block Insertion and Hanger Block Insertion Settings dialogs. This feature allows you to include Hanger Blocks in your BOM.



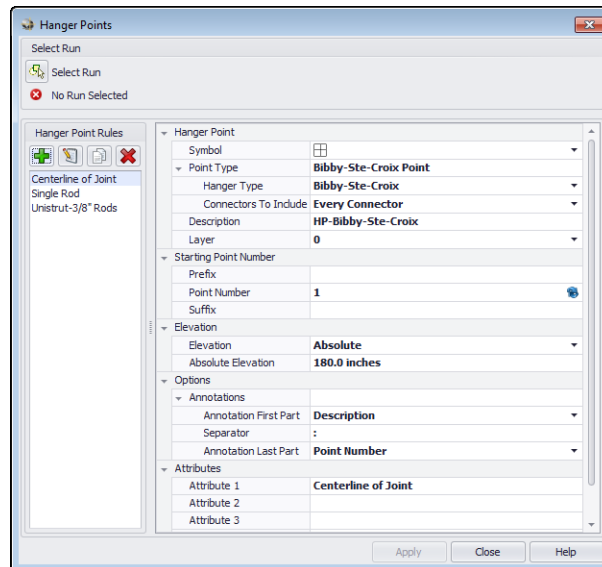
- The *Options / PipeDesigner 3D General* tab now includes an Elevation option for Field Point tooltips.

Note: This checkbox is, by default, not selected..



Hangers

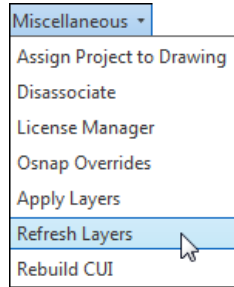
- New Hanger Type: Bibby-Ste-Croix**
This setting places hanger points based on how you define the type. Options are:
 - A hanger point on every connector in a run
 - Every other connection in a run



- Hanger Point Rules**
A new hanger point rule using Centerline of Joint is available for the Bibby-Ste-Croix hanger type.

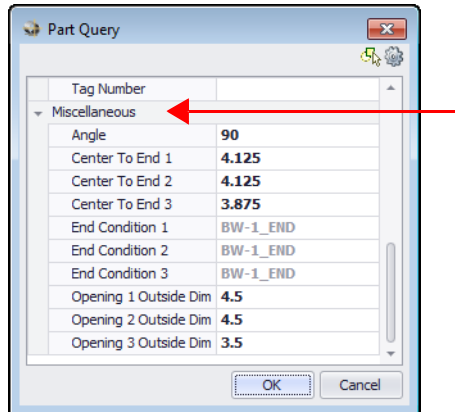
Automatic Layering

When layering information is updated in the PipeDesigner 3D Data Editor, this can now be updated in your current drawing. Go to *PD3D™ Tools / Utilities* and click ▼ next to *Miscellaneous*. When you click the *Refresh Layer* command, the layers are updated.



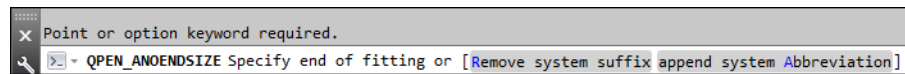
Part Query

A new Miscellaneous section is available in the Part Query. This section provides additional information pertaining to the selected part.



Annotations

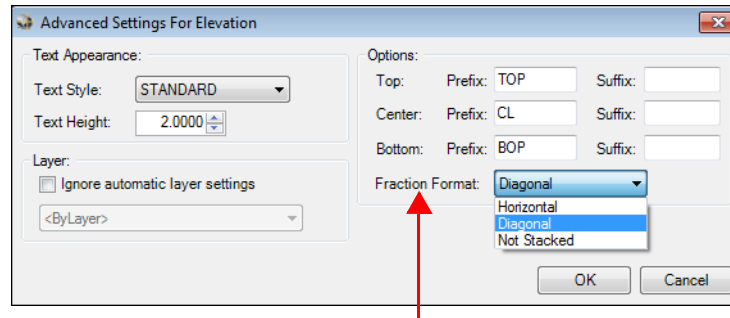
- **End Size Annotation System Suffix**
You can now specify how an end size annotation displays a system.



You can select one of the following:

- **Remove system suffix**
Displays no system suffix
- **Append system abbreviation**
Abbreviates the system suffix, for example *Generic* becomes *GEN*

- **Show all**
Displays the entire system suffix
- **Elevation Annotations**
Advanced options are now available for fraction formats.



Auto Routing

When you auto route a sloped route line, short pieces of pipe are now placed on the high side of the run.

Additional Modifications

- The AutoCAD Object Viewer now fully zooms in on PipeDesigner 3D entities.
- Spool functionality improvements:
 - Spools now open with the zoom properly set
 - Spool drawings now draw in the actual color of the drawing (rather than the color of the spool).

Resources

This release includes a Resource page (under PD3D™ Tools / Properties). This page provides easy access to our various support services, by providing the following links from within the software application:

- Trimble MEP website
- MEP Client Services email
- Trimble MEP online support (requires contact with a representative)
- System information (often needed by an MEP Client Services representative)