

Trimble® Field Points v4.0 | Release Notes

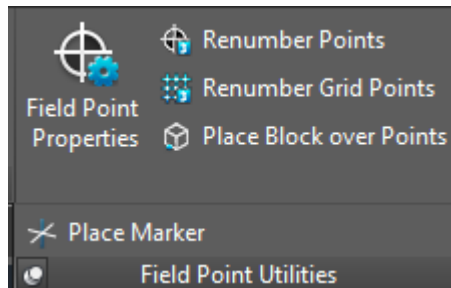
Periodically, Trimble provides interim software releases that include modifications to our software applications. We are pleased to announce releases of the **Trimble Field Points** software product as follows:

- **Version 4.0** - *Compatible with Autodesk® AutoCAD® 2017 and Autodesk® Revit® 2017*

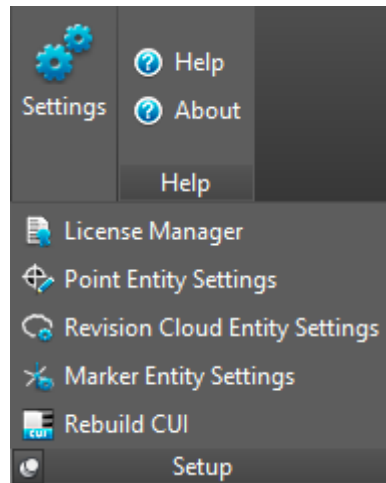
This document provides you with important information pertaining to the enhancements and/or modifications included in this release of our software.

AutoCAD Compatible Applications

- Compatible with Autodesk® AutoCAD® 2017
- Placing a 'Marker' is now available in the model as well as the block editor. And is accessible from the 'Field Points Utilities Panel'.



- 'Marker Entity Settings' are now located in the 'Setup Panel'.

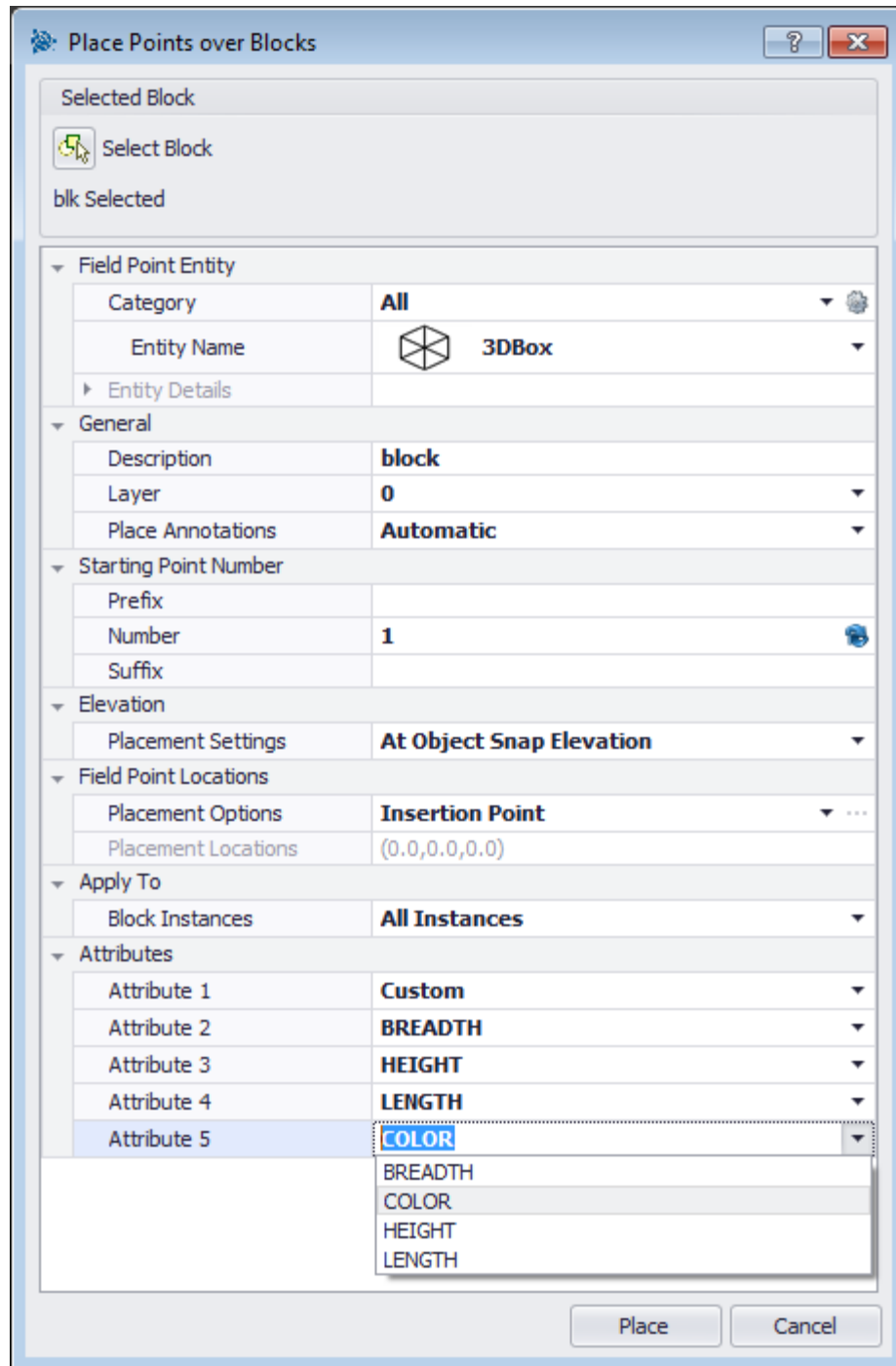


This document is for informational purposes only and is not a legally binding agreement or offer.
Trimble makes no warranties and assumes no obligations or liabilities hereunder.

© 5/16/16, Trimble Navigation Limited. All rights reserved. Trimble, the Globe & Triangle logo, Trimble Field Points is a trademark of Trimble Navigation Limited, registered in the United States and in other countries. Other brand and product names are trademarks or registered trademarks of their respective holders.



- Autofill Custom Attributes from Blocks.
 - If your block contains attributes you can now select them from the 'Place Points over Blocks' dialog box and populate them in the attribute field in the order you prefer.



- Various Bug Fixes


Revit Compatible Applications


- Compatible with Autodesk® Revit® 2017
- Various Bug Fixes

Update Information


 **Caution** – Please refer to the chart below for software compatibility!

Version Compatibility	
Trimble Field Points	Autodesk
4.x	2017

 **Caution** – It is advised that you not update Trimble Field Points for Revit in the middle of a project. For more information on upgrading projects please refer to Autodesk’s official site.

 **Tip** – For Installation Instructions, please refer to the Trimble Field Points download site;

- <http://buildings.trimble.com/purchased-tfp-download>

 **Tip** – For prior release notes please refer to Trimble Field Points Release Notes page;

- http://mep.trimble.com/support/release-notes?field_this_product_tid=101

Note: *If you need assistance installing this release, please contact MEP Client Services at 1-800-234-3758.*