

# 2.0 RELEASE NOTES

## **Trimble® Field Points Software**

- Introduction
- Compatibility
- New Features/Enhancements

Trimble Navigation Limited  
116 Inverness Drive East, Suite 210  
Englewood, Colorado 80112  
800-234-3758

## **Legal Notices**

### **Copyright and Trademarks**

©1999-2015 Trimble Navigation Limited. All rights reserved.

Trimble and the Globe & Triangle logo are trademarks of Trimble Navigation Limited, registered in the United States and in other countries. Trimble Field Points is a trademark of Trimble Navigation Limited. Other brand and product names are trademarks or registered trademarks of their respective holders.

This publication, or parts thereof, may not be reproduced in any form, by any method, for any purpose, without the written consent of Trimble Navigation Limited.

### **Release Notice**

This is the Trimble Field Points Software Release Notes (Revision A). It pertains to release 2.0 of the software.

The topics within this document are:

- Subject to change without written notice.
- Companies, names, and data used in any examples are fictitious.
- Screenshots included in the help topics may not be exactly as in the software application.

### **Edition**

Trimble® Field Points Release Notes, Release 2.0

Part # TFP8080.08.0215\_Release Notes 2.0  
Friday, March 06, 2015 2:38 pm

---

## Introduction

This document provides basic information about new features and modifications in release 2.0 of the Trimble® Field Points software. For detailed instructions, please refer to the online help system.

### Upgrade Procedure

Please refer to the Trimble Field Points *Update Installation Instructions* document on the download site for information on installation requirements. Trimble recommends that you print this document and follow the instructions closely to ensure proper operation of the software application after installation.

## Compatibility

### Autodesk® Software

This release of the Trimble Field Points software is compatible with:

- AutoCAD® 2015
- AutoCAD® Revit 2015

It will **not** update any other version of these applications. **Note:** *This release will not update with the 2014 suite of compatible Autodesk products.*



**Tip** – Your version of the AutoCAD and/or Revit applications must correspond with the compatible versions of Trimble Field Points.

### Trimble® Field Link

The Trimble Field Link software allows you to easily manage layout tasks by employing a task-based workflow featuring advanced Layout, Reporting, and Model Viewer functionality.

This release of the Trimble Field Points software is compatible with:

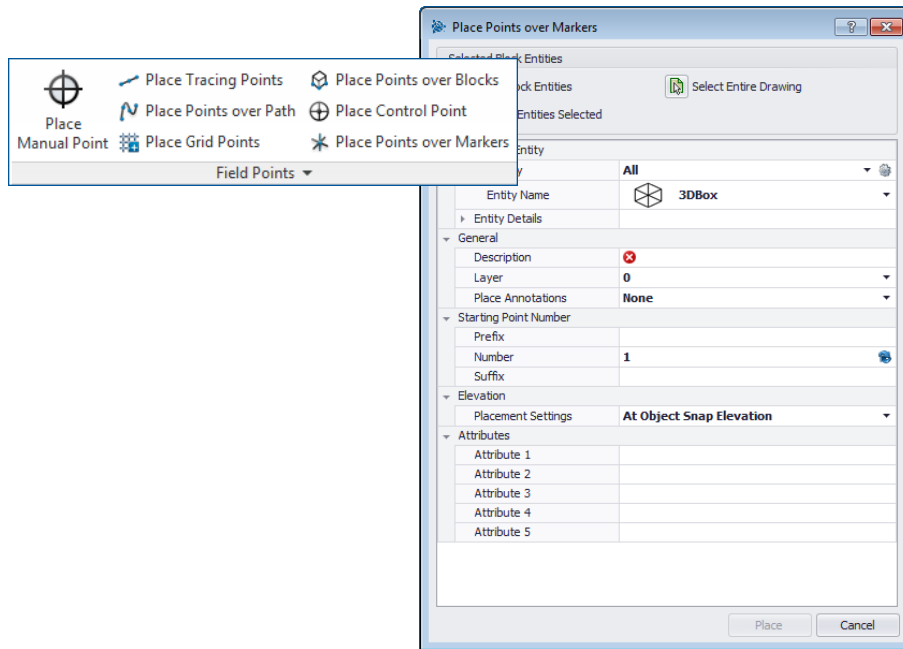
- Trimble Field Link, versions 2.2 or later
- Trimble Field Link, versions 2.1 and earlier

## New Features/Enhancements

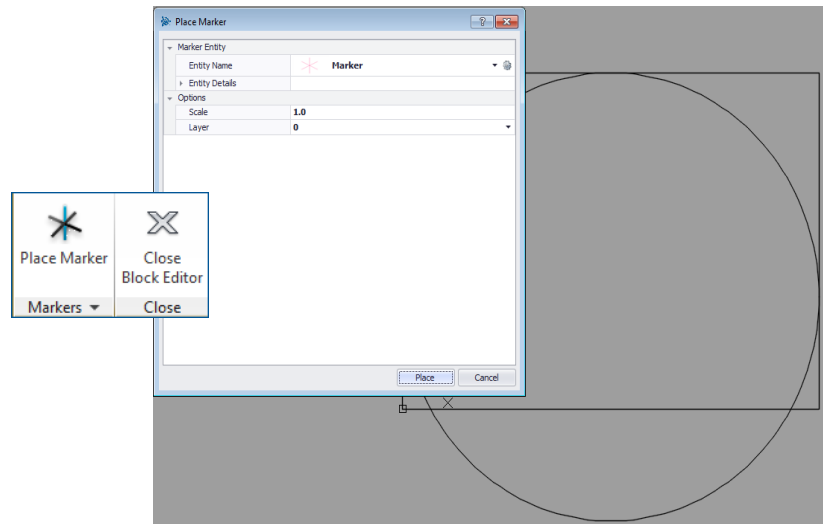
The following enhancements have been added to the Trimble Field Points software in this release.

### Trimble Field Points for AutoCAD

- **Place Points over Markers**  
This command allows you to place field points on a block containing a marker, or place holder, in a block.



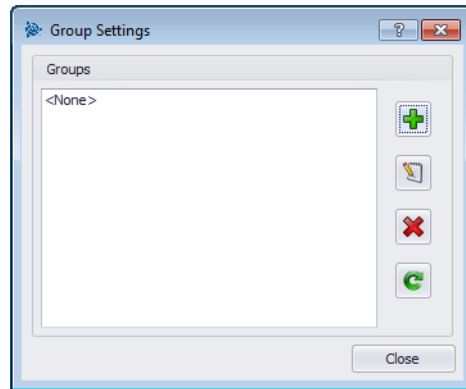
- **Place Markers on Blocks**  
This feature also includes the ability to place points on dynamic blocks.



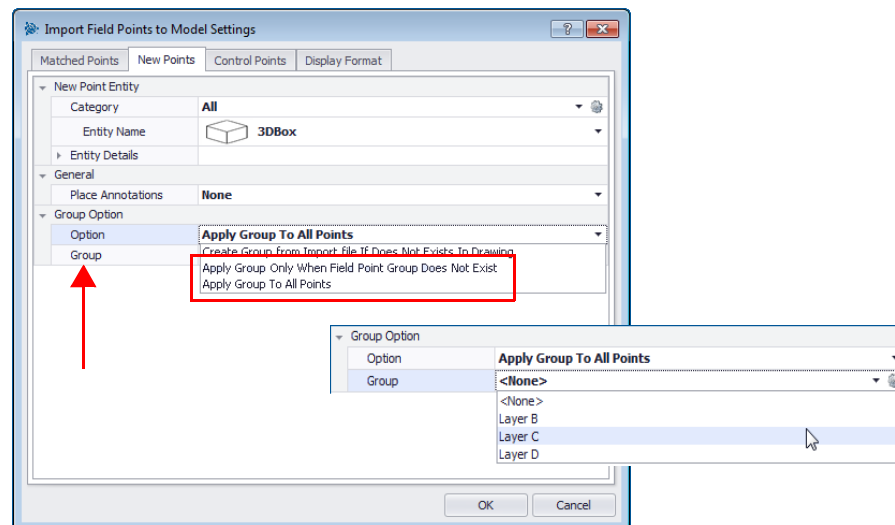
- Point Import Enhancements**  
 When importing points, points are now placed on the layer where they were originally exported from, rather than the *default if not found* layer.

## Trimble Field Points for Revit

- User-defined Groups**  
 This release of the Trimble Field Points for Revit software allows you to create user-defined groups for use when importing points into your model. This feature is used to simulate layers in your Revit model (similar to AutoCAD and Trimble Field Link) to better define imported field points.

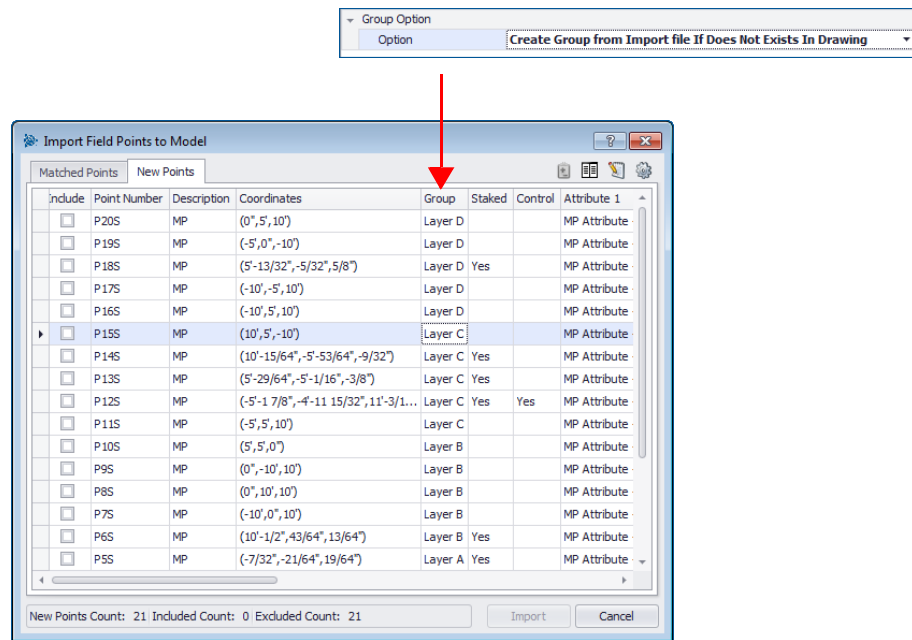


You can create groups, and you can then select when importing points into the Trimble Field Points software.



OR

You can allow the Trimble Field Points software define groups based on the settings in your model.



When you allow the import to define your group(s), the group(s) display in the Group Settings dialog.

**Note** – After you have defined groups in the Group Settings dialog, you can select a Group when placing points.

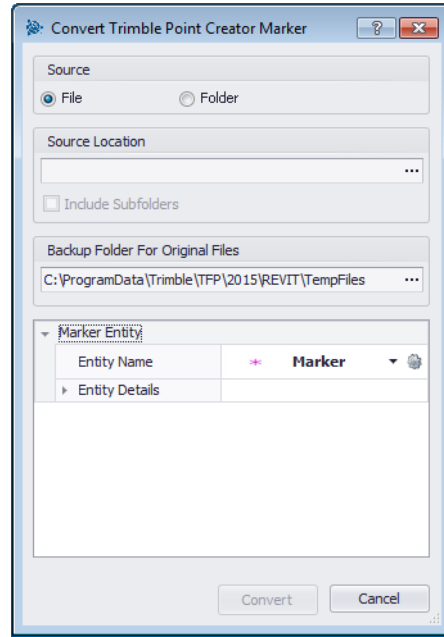
- **3D Object Snap**

You now have the option to snap to objects in a 3D view when placing field points.

---

- **Revit Families**

You can now use markers created in Trimble® Point Creator from within the Trimble Field Points software (under *Setup*). This avoids the need to recreate these markers in your model. This converts the markers to Trimble Field Points, with an option to back up your Trimble Point Creator files).



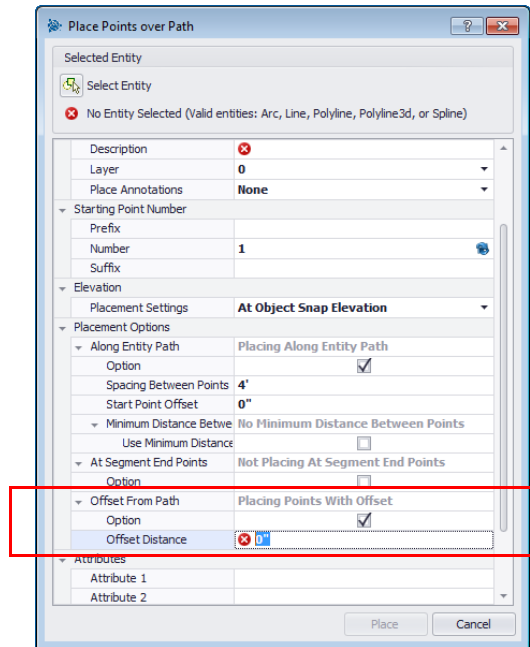
### Common Trimble Field Points Enhancements (AutoCAD / Revit)

Common modifications affecting both Trimble Field Points for AutoCAD and Trimble Field Points for Revit follow:

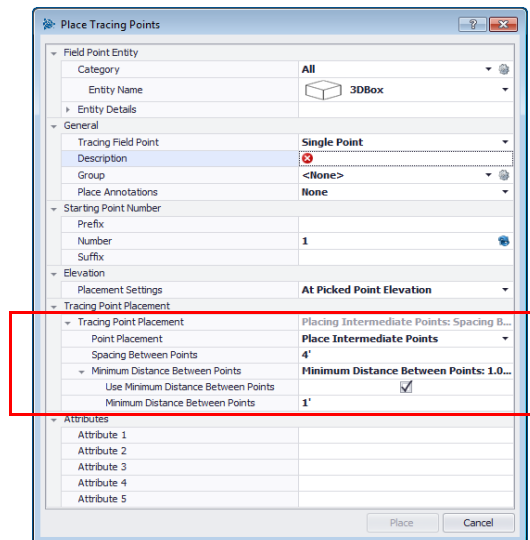
- **Point Offset**

This release of the Trimble Field Points software provides an option to offset a point in one direction or both (based on XY plane). This allows you to select the side to offset from (perpendicularly).

– **Trimble Field Points for AutoCAD**  
Place Points over Path



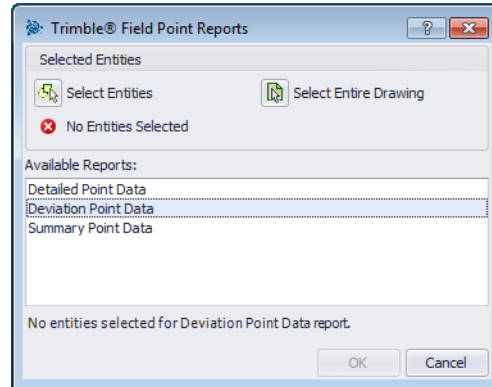
– **Trimble Field Points for Revit**  
Place Tracing Points





- **Deviation Report**

When you import points into the Trimble Field Points software, you can now run the Deviation Point Data report. This report illustrates how point location may have changed from the original placement in your drawing/model.

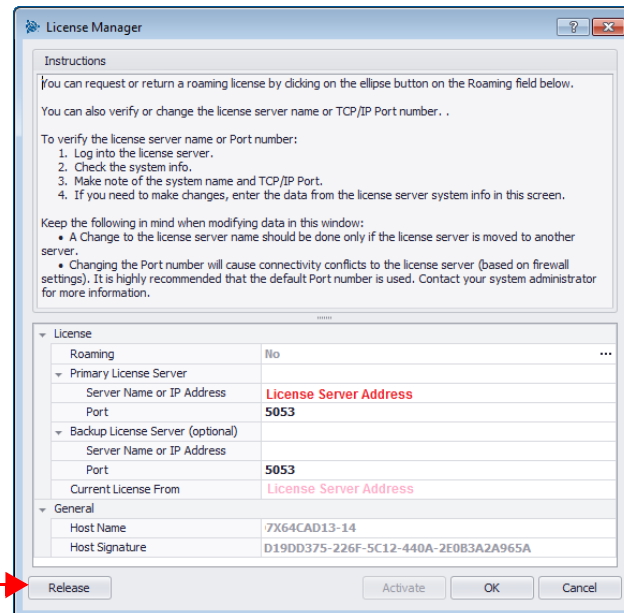


- **Reprise License Server**

The Reprise License Server can now be installed and run on a virtual computer.

- **License Release/Return**

Under *Settings / License Manager*, a *Release* command is now available. Releasing a license allows you to continue to work in the AutoCAD or Revit applications without restricting use of a Trimble Field Points license. This provides license availability to others.



When you need to use a Trimble Field Points license again, you can click the **Get License** button.

---

- ***Multiple Version Installation***

This release of Trimble Field Points allows you to have multiple versions of the software loaded on the same computer. For example, if you are working on projects in AutoCAD and Revit versions 2014 and 2015, you can now have versions of Trimble Field Points compatible with both installed on the same machine.