

2015 v1 RELEASE NOTES

Vulcan Software

- Introduction
- New Features/Enhancements

Trimble Navigation Limited
10427 Cogdill Road, Suite 700
Knoxville, TN 37932
(800)441-2840

Legal Notices

Copyright and Trademarks

©1998-2015 Trimble Navigation Limited. All rights reserved.

Trimble and the Globe & Triangle logo are trademarks of Trimble Navigation Limited, registered in the United States and in other countries. Other brand and product names are trademarks or registered trademarks of their respective holders.

This publication, or parts thereof, may not be reproduced in any form, by any method, for any purpose, without the written consent of Trimble Navigation Limited.

Release Notice

This is the Vulcan Release Notes (Revision A). It applies to release 2015 v1 of the software.

The topics within this document are subject to change without written notice. Companies, names, and data used in any examples are fictitious. Screenshots included in the topics may not be exactly as in the software application.

Edition

Vulcan Release Notes
Part # Vulcan8071.08.0115_Release Notes 2015 v1

Tuesday, January 20, 2015 9:44 am

Introduction

This document provides basic information about new features and modifications in release 2015 v1 of the Vulcan software.

What You Receive With Release 2015 v1

- One Vulcan Installation DVD
- One Vulcan *Let's Get Started* foldout

Upgrade Procedure

Please refer to the Vulcan *Update Installation Instructions* document on the installation DVD for information on installation requirements. Trimble recommends that you print this document to help ensure proper operation of the software application after installation.

Compatibility/Technical Support

Operating Systems

This version of the Vulcan software is compatible with 32-bit and 64-bit Windows® XP Professional* (Service Pack 2 or later), Windows Vista Business (Service Pack 2), and Windows 7 operating systems. For a more complete listing of System Requirements, please go to our [website](#) under **Products / Fabrication / Vulcan**.*

*Beginning with the 2015 fourth-quarter release, Trimble will no longer support the Windows XP operating system for the Vulcan office software. This is in accordance with Microsoft ending support/updates, leaving your computer system vulnerable. Please click the link below for additional information.

<http://windows.microsoft.com/en-us/windows/end-support-help>

Note: Trimble will continue to support Windows XP for the Controller software.

Trimble Software Integration

The Vulcan software includes the ability to import data from other Trimble MEP software applications. Refer to the online help in the following applications for information in creating the export files.


- Trimble® DuctDesigner 3D®
- Trimble® AutoBid® SheetMetal

You can import files created in these applications into Vulcan by going to the main menu, **Function / Import**.

Instructional Videos

The Vulcan Installation DVD includes instructional videos that provide demonstrations of the various features in the software. Trimble recommends that you use this resource whenever possible. These can be viewed directly from the installation DVD.

1. On the main Vulcan Installation screen, click **Vulcan Video Training**.
2. Click on the video you want to view. It launches on your computer in your default media player. When you are done watching it, close the video screen and select another from the screen or click **Back to Main** screen.

Note – *The videos also install on your computer. Click the Vulcan Video icon  on your Desktop to open the folder, then click on the video file you want to view.*

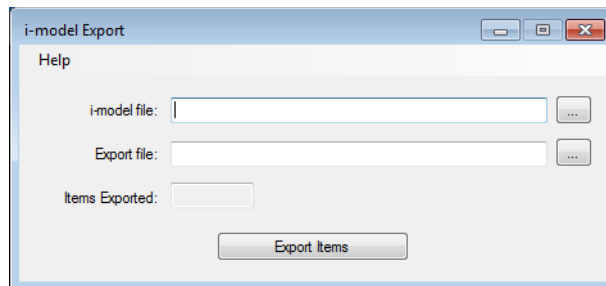
New Features/Enhancements

This release of the Vulcan software includes the modifications and enhancements listed below.

Software Compatibility Enhancements

Bentley® Systems i-model Import

The Vulcan software now accepts fittings from Bentley Systems i-model. You must first export these from i-model to the Vulcan format.



Tracking for Vulcan

The Vulcan software now includes an option to turn on the Tracking for Vulcan software when you want to start using this application.

Additional Tracking for Vulcan Features

This release allows you to use the tracking software with a smartphone (iPhone® and Android™) with an inexpensive Bluetooth® scanner (as well as hand-held scanners). Using a smartphone allows you to track items anywhere (shop, field, and so on).

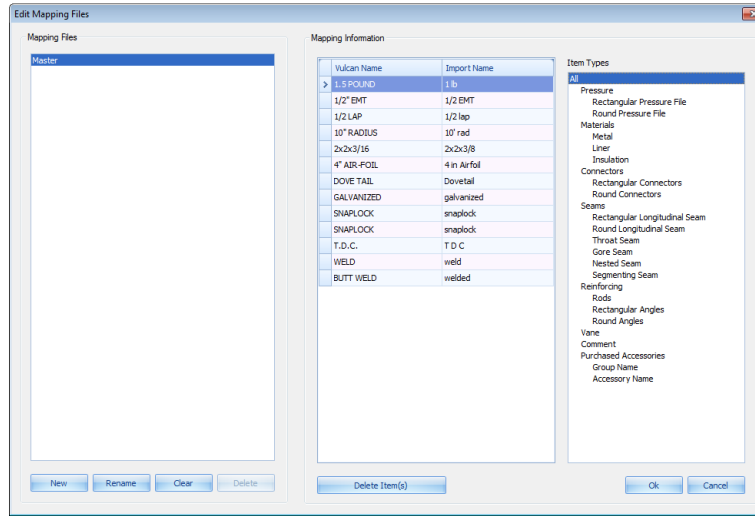
Note – *Tracking for Vulcan requires additional licensing. Please contact your Trimble MEP sales representative for more information.*

Vulcan Software

Mapping Editor

This release of the Vulcan software includes a new mapping editor. This allows you to easily map/edit values to the equivalent item in the Vulcan database.

Note – Mapping items to existing Vulcan items when importing data provides more accurate information in your Vulcan database.



You can open this editor in the Import Files screen by clicking **Edit**.

Items Grid

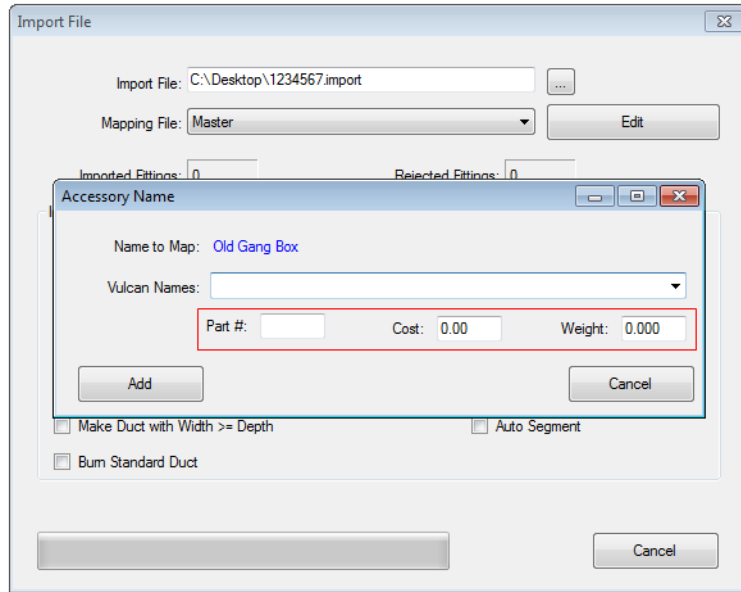
- The Items Grid in the Vulcan software now includes a length column. This column provides easier location of length fittings for selection or editing.

Alpha #	Field	Verify	#	Item	Qty	Metal	Information	Liner and Insulation	Pressure	Area	Weight	Cost	Hours	Length	Drawing	System	Floor	Change Order	User 1	User 2	Segmented	Modified
1				1 Cut Duct	1	26.0 - GALVANIZED	10.000 x 12.000; 10.000 x 12.000	None	1" WG	12.14	11.00	\$0.02	0.00	36.00	None	None	None	None	None	None		
2				2 Standard Duct	1	26.0 - GALVANIZED	12.000 x 16.000; 12.000 x 16.000	None	1" WG	24.73	22.41	\$0.04	0.00	59.00	None	None	None	None	None	None		
3				3 Standard Duct	1	26.0 - GALVANIZED	12.000 x 14.000; 12.000 x 14.000	None	1" WG	23.06	20.90	\$0.04	0.00	59.00	None	None	None	None	None	None		
4				4 Standard Duct	1	26.0 - GALVANIZED	12.000 x 18.000; 12.000 x 18.000	None	1" WG	26.45	23.97	\$0.00	0.00	56.50	None	None	None	None	None	None		
5				5 Standard Duct	1	26.0 - GALVANIZED	14.000 x 18.000; 14.000 x 18.000	None	1" WG	28.13	25.48	\$0.00	0.00	56.50	None	None	None	None	None	None		
6				6 Standard Duct	1	26.0 - GALVANIZED	14.000 x 16.000; 14.000 x 16.000	None	1" WG	26.41	23.92	\$0.00	0.00	58.00	None	None	None	None	None	None		
7				7 Standard Duct	1	26.0 - GALVANIZED	14.000 x 16.000; 14.000 x 16.000	None	1" WG	26.41	23.92	\$0.00	0.00	58.00	None	None	None	None	None	None		

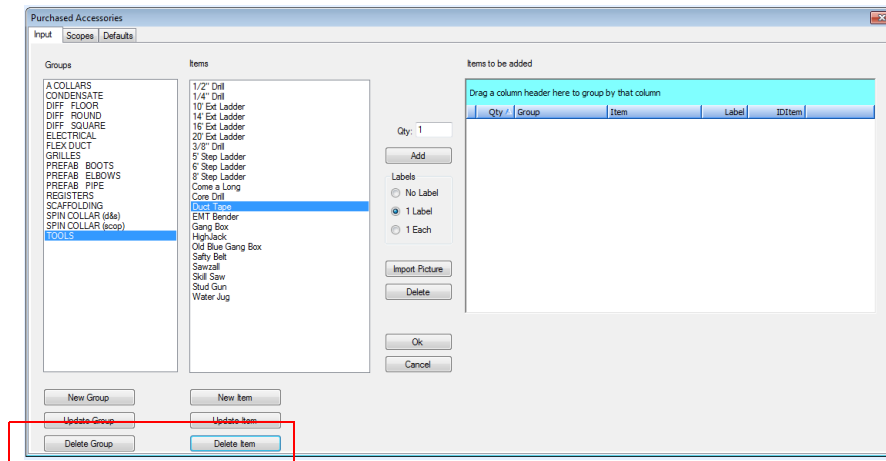
- You can now edit instructions for an item in the Items Grid. This eliminates the need to reprocess the job (as required in previous versions).

Purchased Accessories

- You can now add weight and cost for accessories items while importing information for a job. This saves you time by eliminating the need to edit the item at a later time.



- This release of the Vulcan software allows you to delete purchased accessories no longer needed.



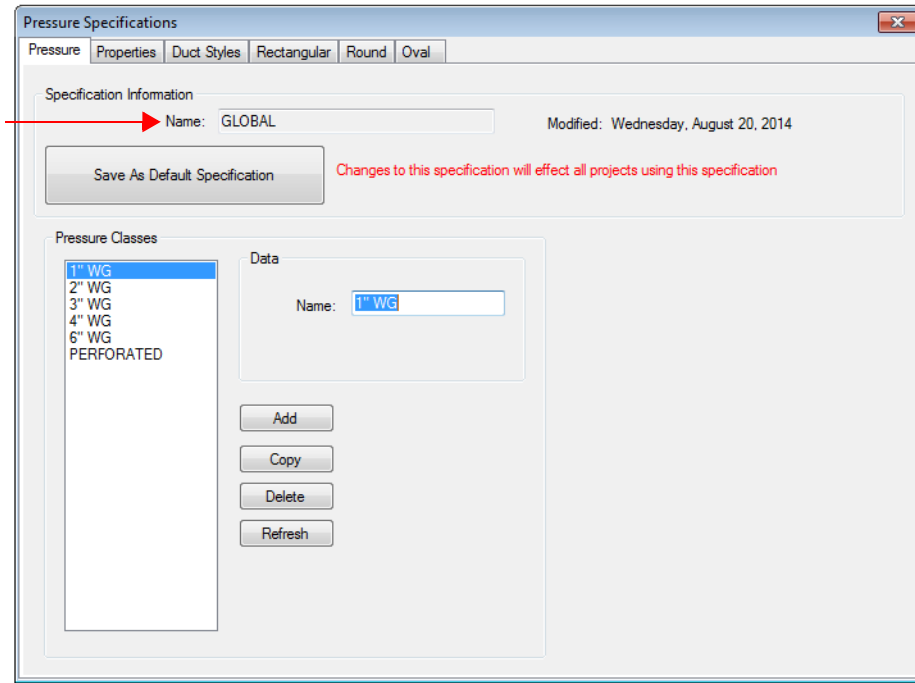
Automatic Selection/Transition Style

The Vulcan software will now automatically select the transition style based on the perimeter of the fitting.

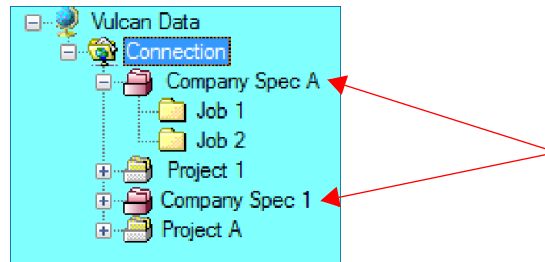
Note – *This automatic selection is done similar to the way duct is handled.*

Operational Enhancements

- Additional font sizes have been added for Sheet Review.
- Project or Company Specification tags now display *Name* field in the Pressure Specifications window.



- The project tree now displays red folder icons if the project is using a company specification.



Additional Modifications

- To reduce the amount of setup, the Vulcan software now retains the last selected Copy Specifications.
- The ability to copy a seam has been added to Shop Data.
- The ability to modify and save the grid's layout has been added to the fitting audit trail.