

QuickPen.
Vulcan

Release
Notes



©1998-2012 Trimble Navigation Limited. All rights reserved.

QuickPen is a trademark of Trimble Navigation Limited registered in the United States and/or in other countries. QuickPen Vulcan is a trademark of Trimble Navigation Limited. All other trademarks are the property of their respective owners.

Published by: Trimble Navigation Limited
QuickPen Division
10427 Cogdill Road, Ste 700
Knoxville, TN 37932
(800)441-2840

Edition: QuickPen Vulcan Release Notes, 2013 v2
November 16, 2012
Part # Vulcan8071.08.1112_Release Notes_2013.2

This publication, or parts thereof, may not be reproduced in any form, by any method, for any purpose, without the written consent of Trimble Navigation Limited.

QuickPen Vulcan 2013 v2 Release Notes

What You Receive with Release 2013 v2

- One Installation DVD
- Vulcan “*Let’s Get Started*” fold-out

Note: The Vulcan update installs only program modifications and feature enhancements. Your existing database is not impacted in any way.

QuickPen Vulcan Release 2013 v2 Online Documentation

Note: Adobe Reader® is required on your system to view much of the online documentation. If this software is not already installed on your computer, you can easily install it from the Vulcan Installation DVD.

Documentation pertaining to this release of Vulcan is available online on the installation DVD as follows:

- *Release Notes*
- *Update Installation Instructions*
- *ReadMe*

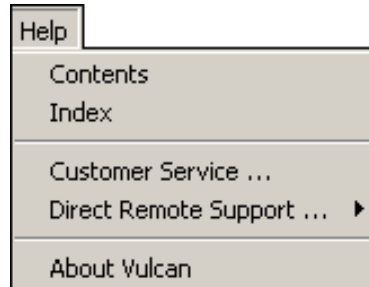
Note: If you are reading this document online, QuickPen strongly recommends that you print the above documents and review them thoroughly prior to installing this update.

Instructional Videos

The Vulcan Installation DVD includes instructional videos that provide demonstrations of the various features in the software. QuickPen recommends that you use this resource whenever possible. These can be viewed directly from the installation DVD.

1. On the main Vulcan Installation screen, navigate to **Go to**.
2. Click **Video Training**. The videos are categorized for easy navigation.
3. Click on the video you want to view. It launches on your computer in your default media player.

Help Menu Commands and Technical Support



The Help menu provides access to online help (**Contents** and **Index**), as well as other utilities and information, including the following:

Customer Service

The Customer Service window includes various support utilities. These options are to be used primarily under the direction of a Vulcan Technical Support Representative.

Direct Remote Support

This command allows you to obtain direct support through web services (such as WebEx®). You must be in contact with a Vulcan Technical Support Representative to use the options under this command.

About Vulcan

When you click this command, information about the Vulcan software displays. You can also obtain contact information for Technical Support.

Update Installation Information

Instructions for proper installation of this update are outlined in a separate document included on the Vulcan Installation DVD. QuickPen suggests that you print, review, and follow the instructions closely to help ensure that software application functions properly after installation.

QuickPen Vulcan 2013 v2 Release Highlights

This release of the Vulcan software system offers the following:

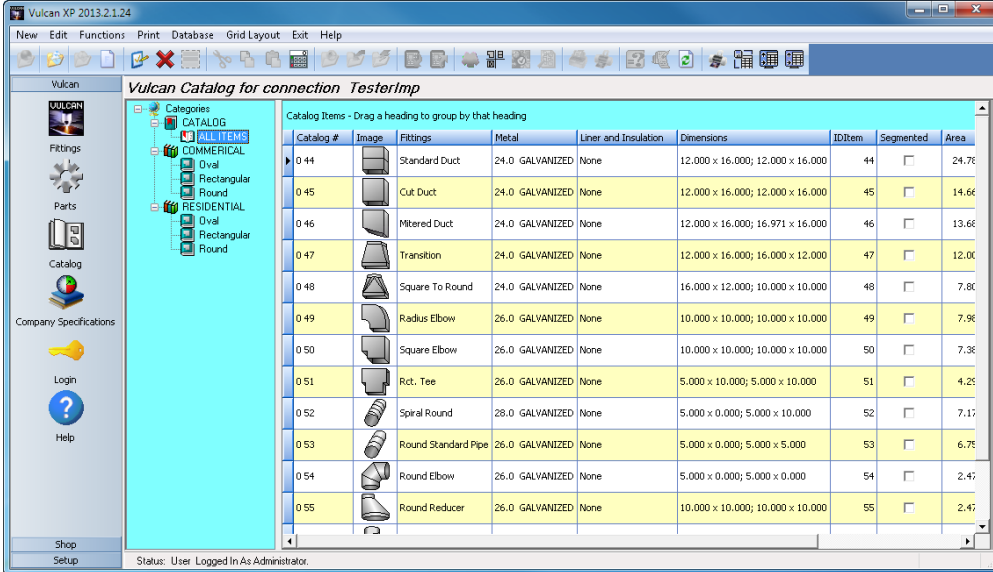
New Features/Enhancements

➤ Catalogs










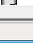


The following additions have been included for Catalogs to improve navigation, including additional icons, and the ability to save specific catalogs.

■ Catalog View Icons

You now have different options to view Catalog of Parts information by using preset views. This allows you to quickly find what you need, making the item selection process more productive.

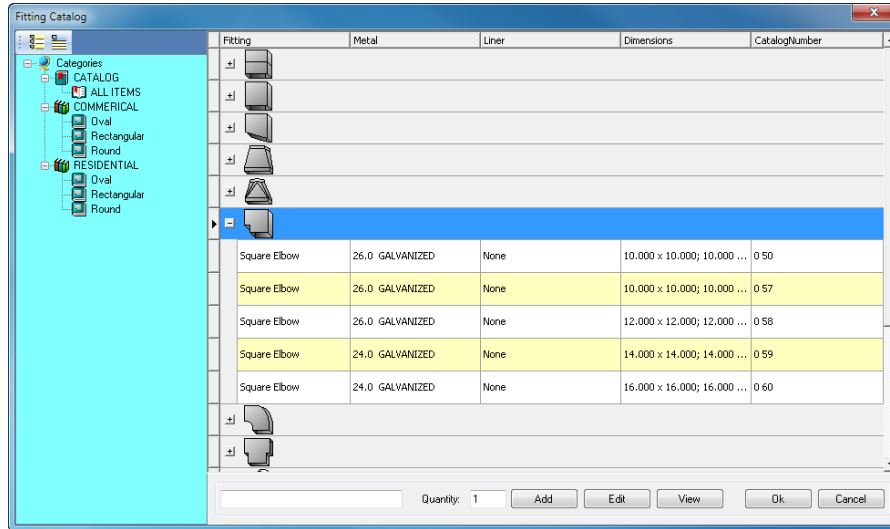


The screenshot shows the Vulcan XP 2013.2.1.24 software interface. The main window displays a catalog titled "Vulcan Catalog for connection TesterImp". The catalog is organized into categories: "ALL ITEMS", "COMMERCIAL" (Oval, Rectangular, Round), and "RESIDENTIAL" (Oval, Rectangular, Round). The main table lists catalog items with the following columns: Catalog #, Image, Fittings, Metal, Liner and Insulation, Dimensions, IDItem, Segmented, and Area.

Catalog #	Image	Fittings	Metal	Liner and Insulation	Dimensions	IDItem	Segmented	Area
0 44		Standard Duct	24.0 GALVANIZED	None	12.000 x 16.000; 12.000 x 16.000	44	<input type="checkbox"/>	24.78
0 45		Cut Duct	24.0 GALVANIZED	None	12.000 x 16.000; 12.000 x 16.000	45	<input type="checkbox"/>	14.66
0 46		Mitered Duct	24.0 GALVANIZED	None	12.000 x 16.000; 16.971 x 16.000	46	<input type="checkbox"/>	13.66
0 47		Transition	24.0 GALVANIZED	None	12.000 x 16.000; 16.000 x 12.000	47	<input type="checkbox"/>	12.00
0 48		Square To Round	24.0 GALVANIZED	None	16.000 x 12.000; 10.000 x 10.000	48	<input type="checkbox"/>	7.80
0 49		Radius Elbow	26.0 GALVANIZED	None	10.000 x 10.000; 10.000 x 10.000	49	<input type="checkbox"/>	7.96
0 50		Square Elbow	26.0 GALVANIZED	None	10.000 x 10.000; 10.000 x 10.000	50	<input type="checkbox"/>	7.38
0 51		Rect. Tee	26.0 GALVANIZED	None	5.000 x 10.000; 5.000 x 10.000	51	<input type="checkbox"/>	4.25
0 52		Spiral Round	28.0 GALVANIZED	None	5.000 x 0.000; 5.000 x 10.000	52	<input type="checkbox"/>	7.17
0 53		Round Standard Pipe	26.0 GALVANIZED	None	5.000 x 0.000; 5.000 x 5.000	53	<input type="checkbox"/>	6.75
0 54		Round Elbow	26.0 GALVANIZED	None	5.000 x 0.000; 5.000 x 0.000	54	<input type="checkbox"/>	2.47
0 55		Round Reducer	26.0 GALVANIZED	None	10.000 x 10.000; 10.000 x 10.000	55	<input type="checkbox"/>	2.47

■ Fitting Icons

Icons have been added to the catalog module. This provides a quick visual reference, which helps you verify that you are selecting the desired items.



■ Grouping

The release of the Vulcan software allows you to group like items in the catalog of parts. When you group catalogs, the Vulcan program displays all fittings by the selected grouping, for example by fitting type. This will save you time by eliminating the need to use grid filtering to locate the items you want to select.

■ Save Catalogs

You can now save multiple catalogs in the Vulcan software. This feature allows you to develop your own catalogs to include fewer fittings. With fewer fittings in your catalogs, you can quickly find the item you need. This feature allows you to create industry and/or material specific catalogs.

➤ Dampers

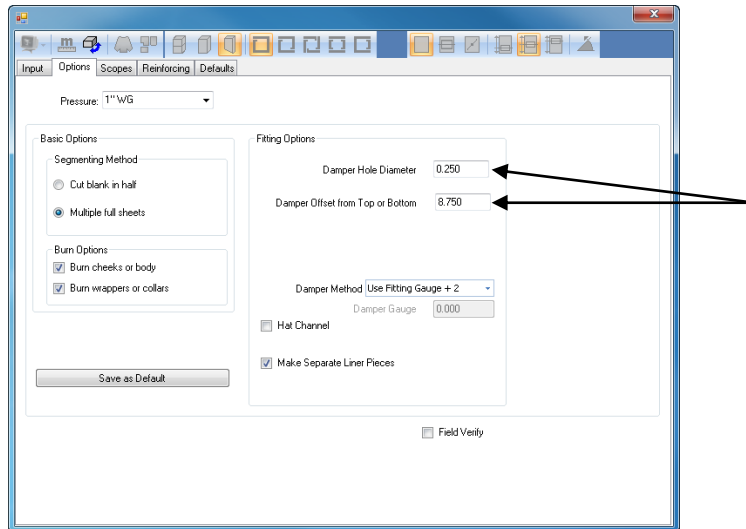
■ Positioning

The 2013 v2 release of the Vulcan software provides easier positioning of dampers. New Top, Bottom, and Center buttons have been added to the fitting input screens. These buttons allow you to place your dampers much faster.



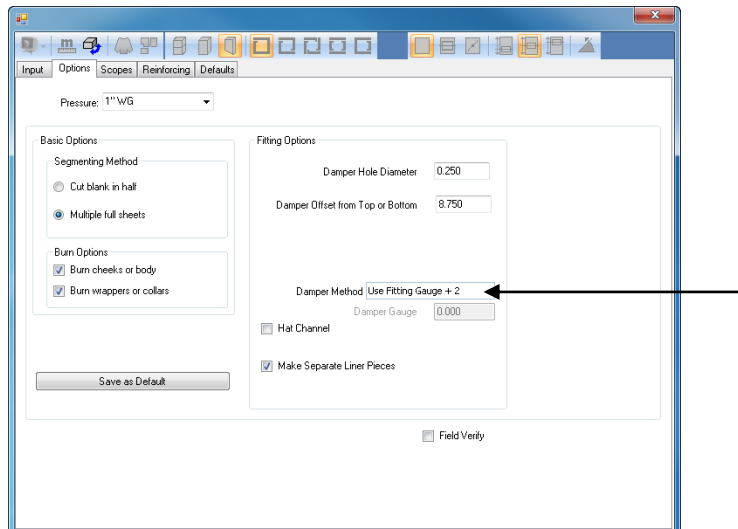
■ Set Distance

Setting the distance for placement of a damper hole has been streamlined in this release of the Vulcan software. Options have been added that allow you to predefine the distance from the top or bottom of the item. This controls damper hole placement, which greatly reduces the time required to place this hole.



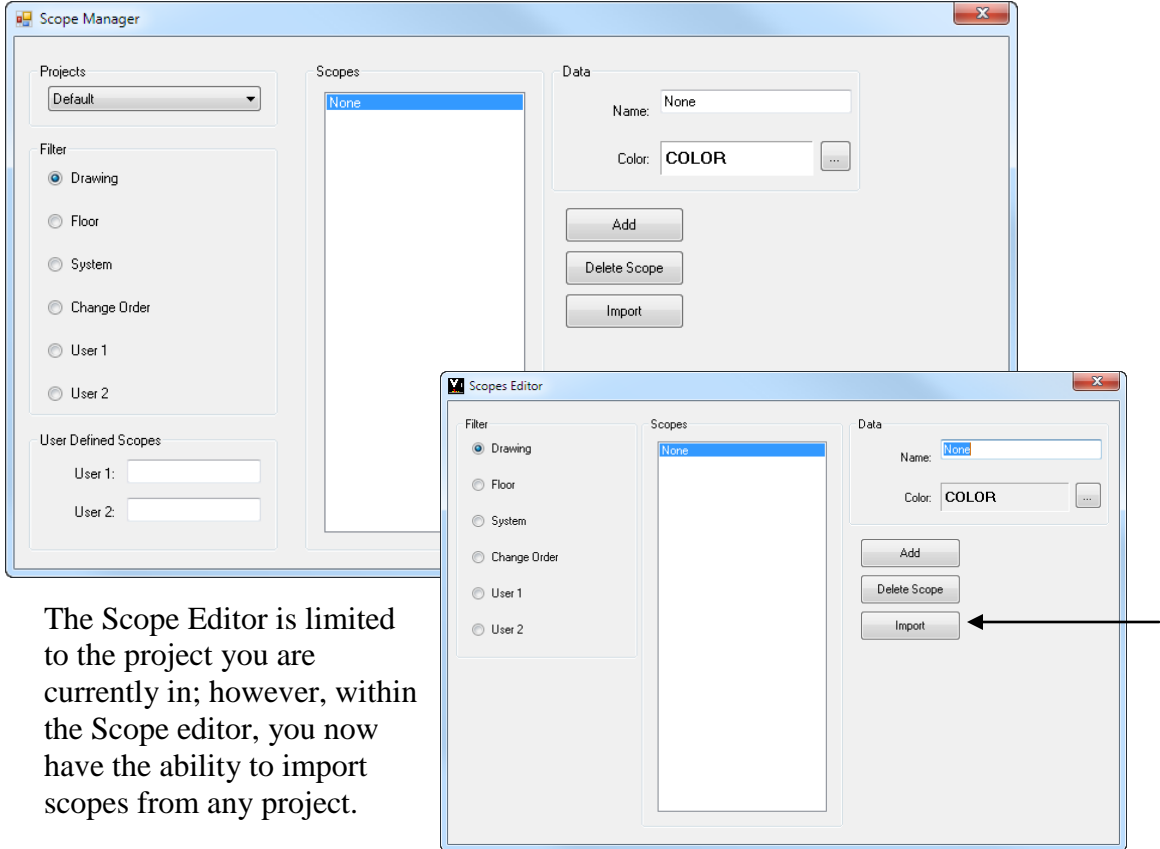
■ Gauge: User-defined parameters

In most cases, the damper blade is two gauges heavier than the duct. An option has been added that allows you to set the parameters to automatically change the blade gauge. This will save you time by eliminating the need to manually change the gauge for each fitting entered.



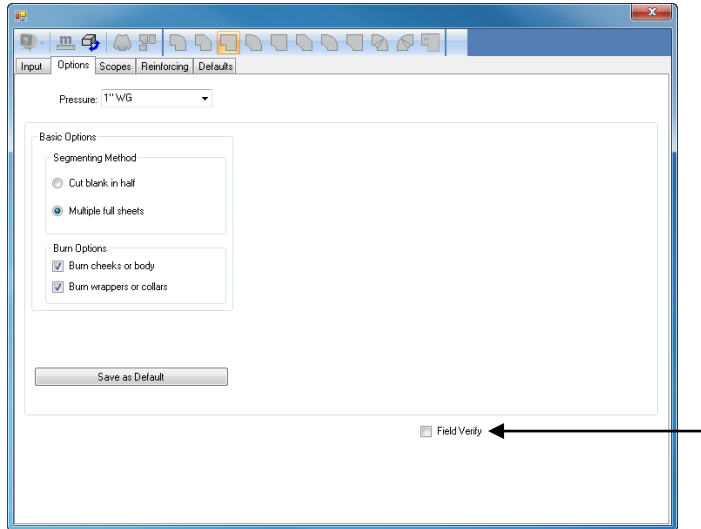
➤ Scope Manager

A Scope Manager has been added to this release of the Vulcan Software. The Scope Manager is a universal editor, allowing you to edit, delete, and import scopes from any existing project into another.



➤ Field Verification

A checkbox is now available in fitting options that will flag the fitting for field verification. This allows you to quickly view flagged fittings in the field and handle them according to requirements before it is actually produced.



➤ Additional Enhancements

■ Main

- Customized grid layouts can be saved for future display.
- When the 'No Liner' option is selected in a project, this setting is retained when creating new jobs.

■ Fittings

- Minimum length now calculates accurately resulting in pants to notch properly.
- Notching on non-90 elbows is now more accurate when the entering end is smaller than the exiting end.
- The correct connector allowance is now placed on drop cheek elbows when the entering end is smaller than the exiting end.
- When entering a super nest fitting, changing the cut duct to the default duct is not an option.

■ Process

- The Vulcan system requires the part to be cut sequenced before you can add as a filler part.
- When elbow throats are not the same or when the widths are different, cutting turning vane holes now behaves as expected.

■ Optimization

- Fitting optimization has been enhanced to resolve certain situations where blanks may be placed off the sheet.
- Liner optimization calculations have been modified to produce less waste.

■ Reports

- When printing plot metal sheets and using certain ISO paper sizes, the Vulcan software will now print on one sheet.
- Reporting the short and long side of a connector on the Connector Cut List produces a more accurate report when using different connectors.

■ Miscellaneous

- **Import\Export**
When selecting 'Make Duct with Width greater than Depth', the reinforcing is now placed on the correct side.
- **Communications**
You can now set kerf on user created parts when downloading to a MultiCam table.
- **VS Control II**
When using 'Nest Lower Left' option the Shear + now works as expected.